



# AMoDeus Simulation Report

## Simulation Information

User: root  
Timestamp: 2019/04/24 - 09:21:29  
  
Iterations: 1 ,i.e., 0 in matsim config.

[AV File](#)   [AV\\_Config File](#)

Dispatcher: AidoDispatcherHost  
Rebalancing Period: -00:00:01  
Redispatching Period: 00:00:10  
  
Network: null\_prepared  
Virtual Nodes: no virtual network found  
Population: 500  
  
Number of Vehicles: 20  
Number of Requests: 500

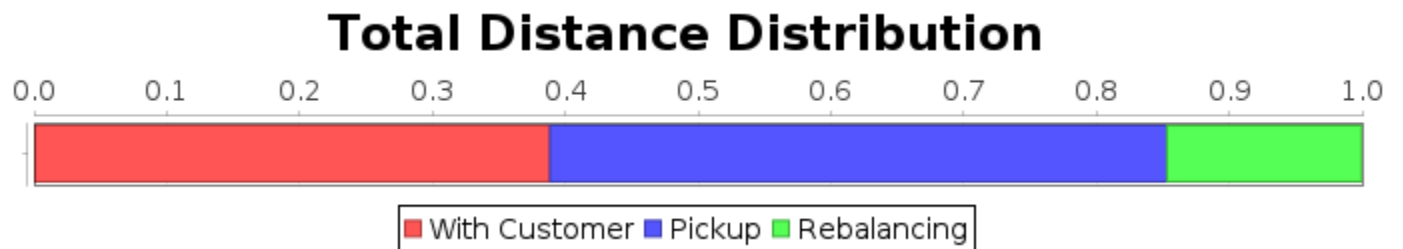
# Aggregated Results

Distance Ratio: 38.86%  
Occupancy Ratio: 17.87 %

## Distances

Total: 21096.72 km  
Rebalancing: 3099.03 km (14.69%)  
Pickup: 9799.03 km (46.45%)  
With Customer: 8198.66 km (38.86%)

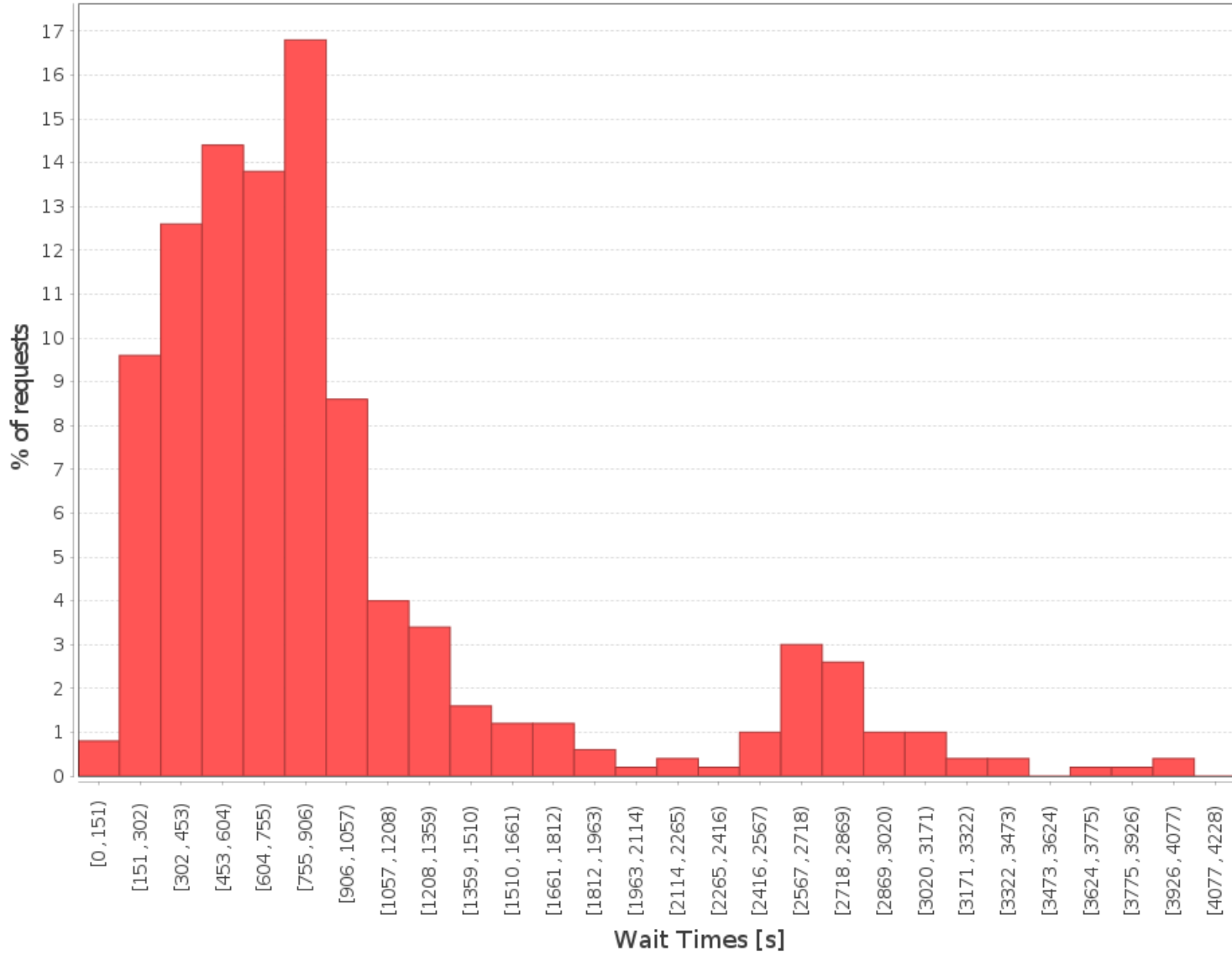
Average Trip Distance: 16.40 km



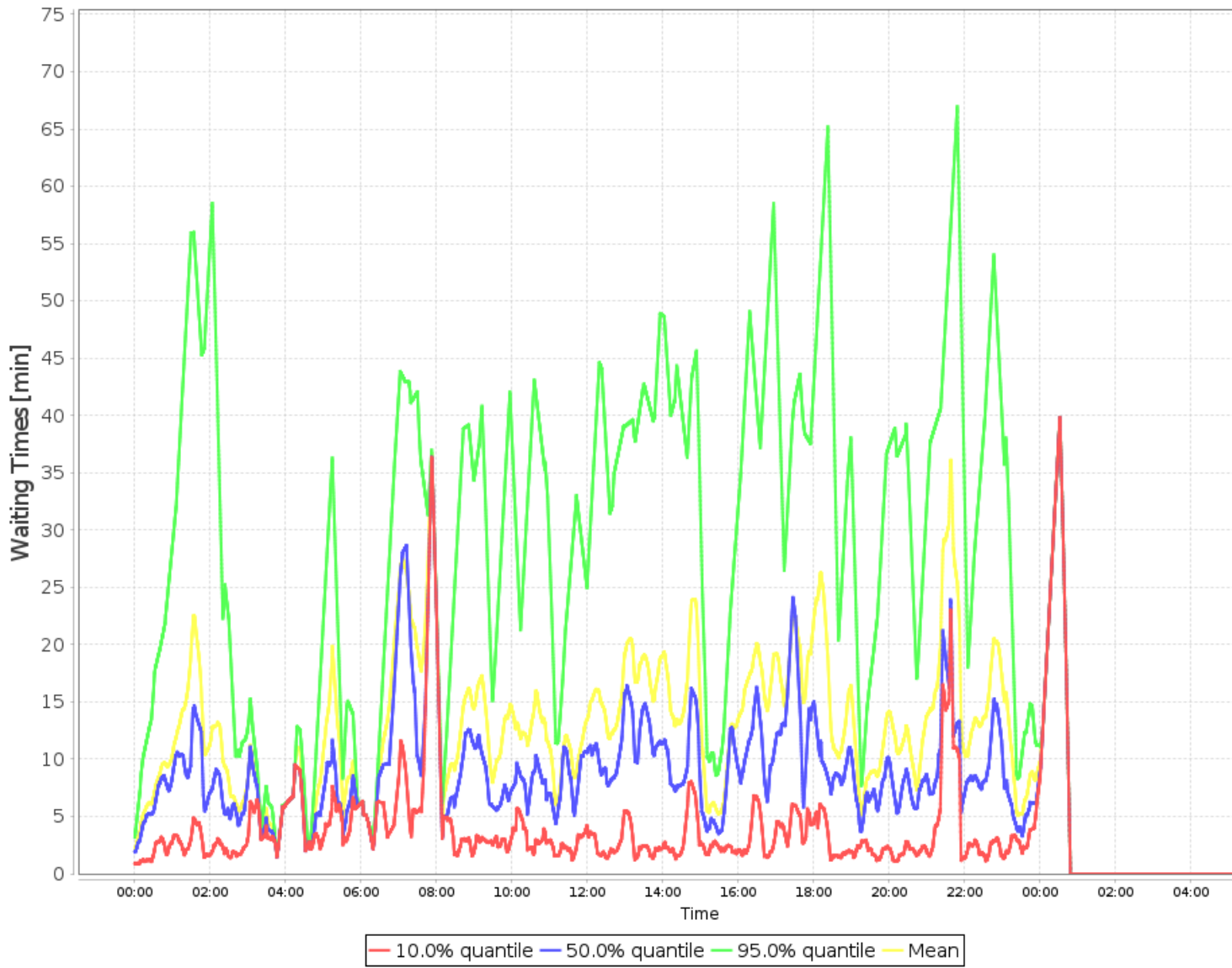
## Wait Times

10.0% quantile: 00:04:52  
50.0% quantile: 00:12:21  
95.0% quantile: 00:46:46  
Mean: 00:15:58  
Maximum: 01:15:28

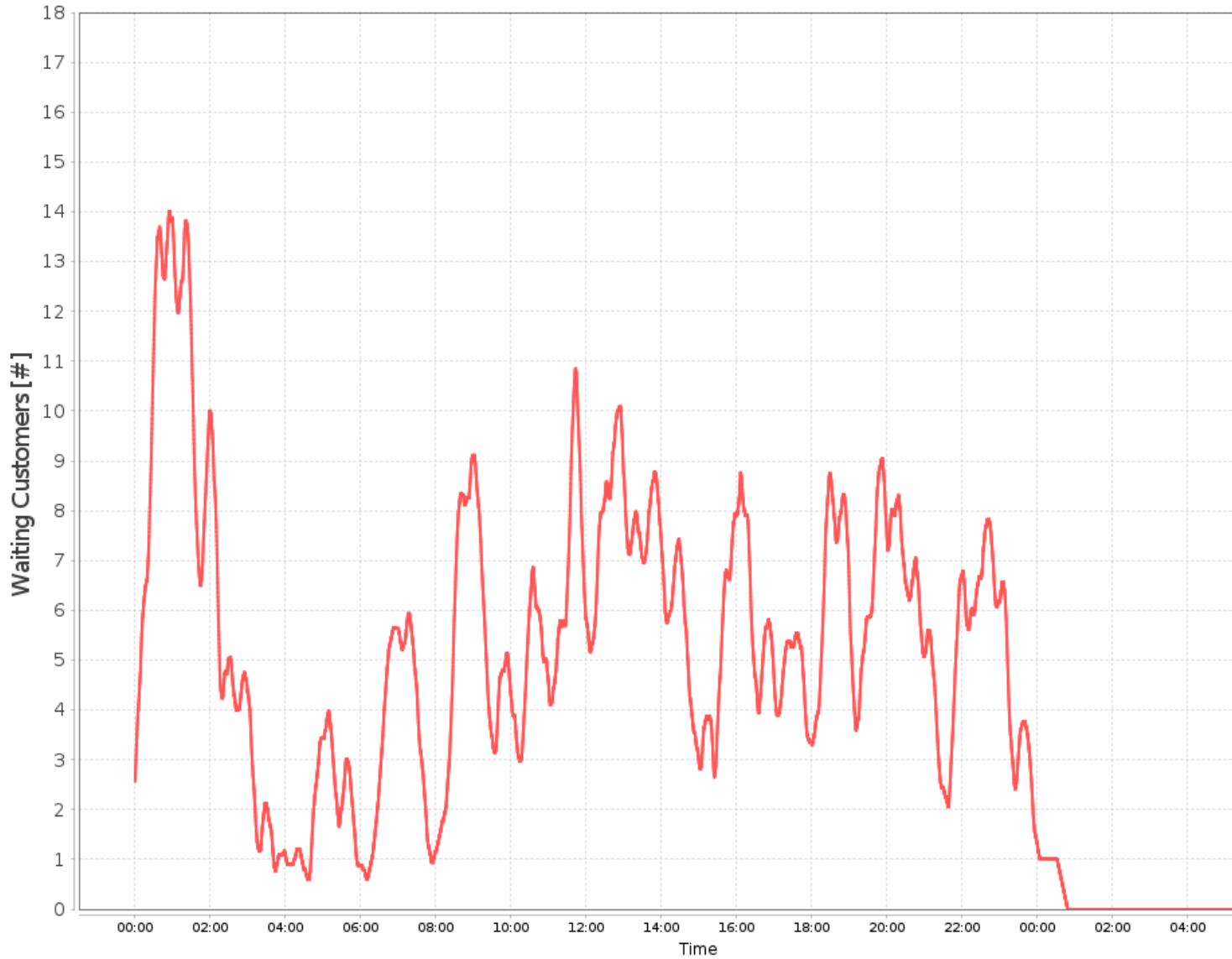
# Number of Requests per Wait Time



# Binned Waiting Times



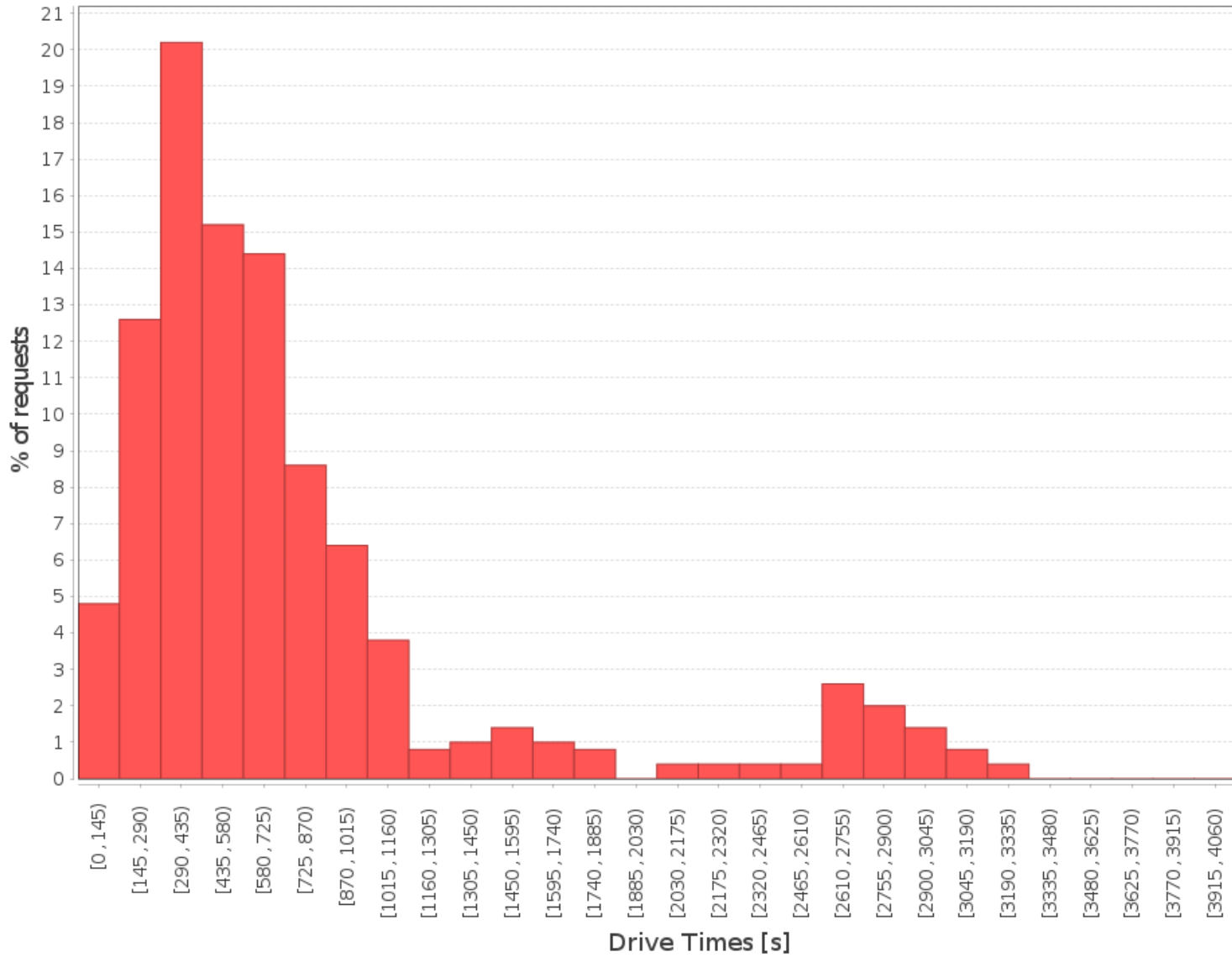
## Waiting Customers per Day Time



### Drive Times

10.0% quantile	00:03:30
50.0% quantile	00:09:10
95.0% quantile	00:45:30
Mean	00:12:51
Maximum:	01:12:20

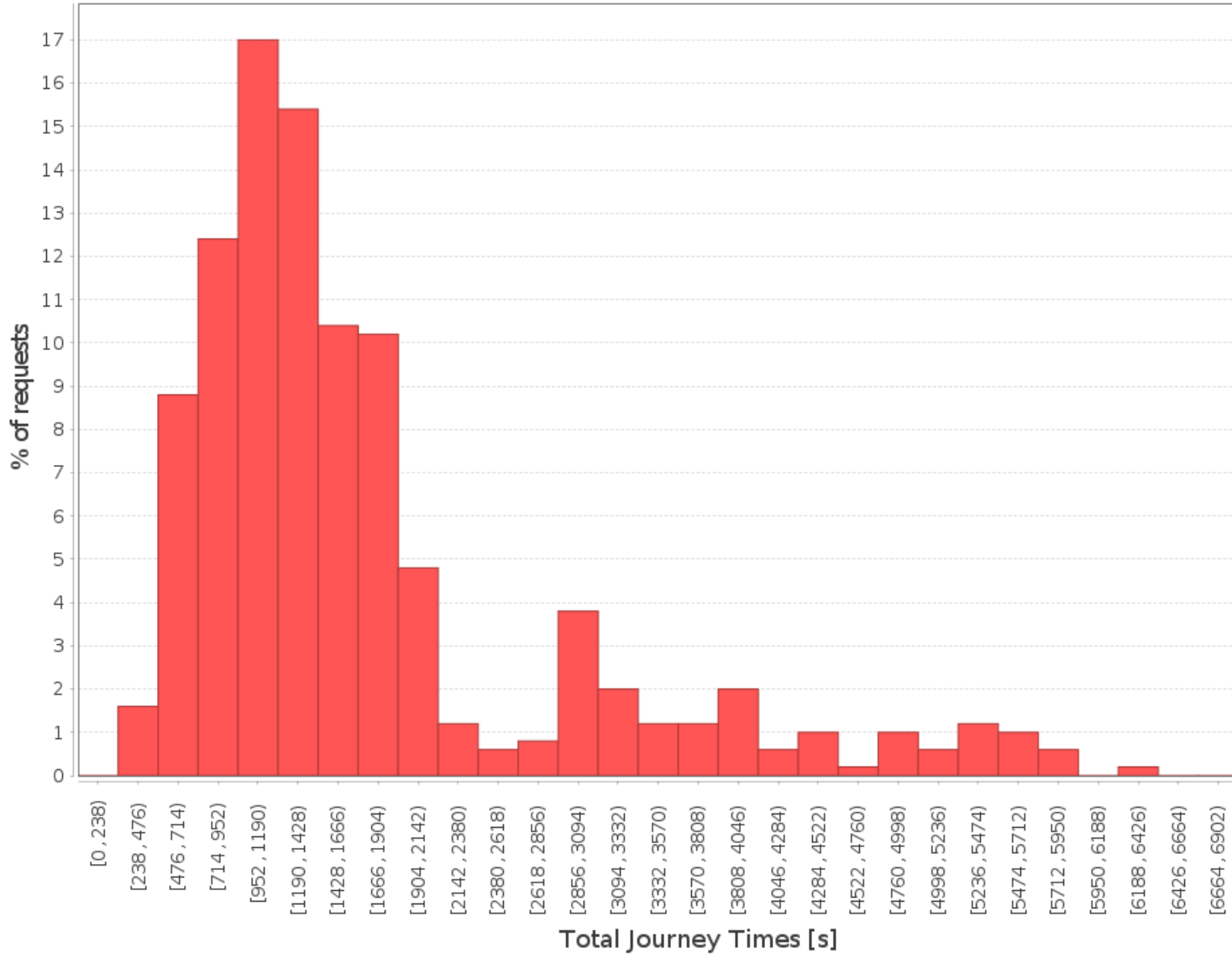
## Number of Requests per Drive Time



### Total Journey Times

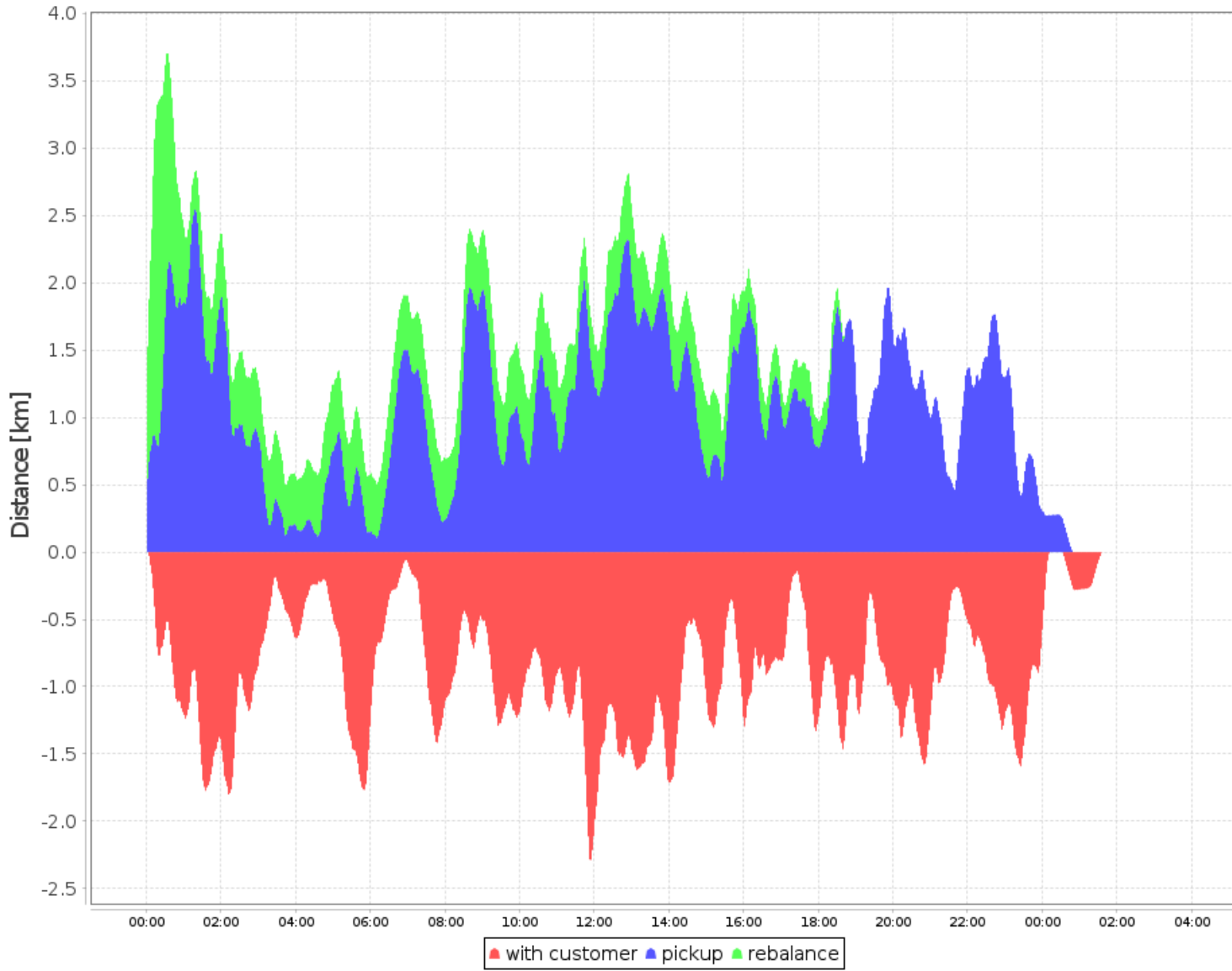
10.0% quantile	00:11:33
50.0% quantile	00:22:06
95.0% quantile	01:14:45
Mean	00:28:50
Maximum:	01:59:06

# Number of Requests per Total Journey Time



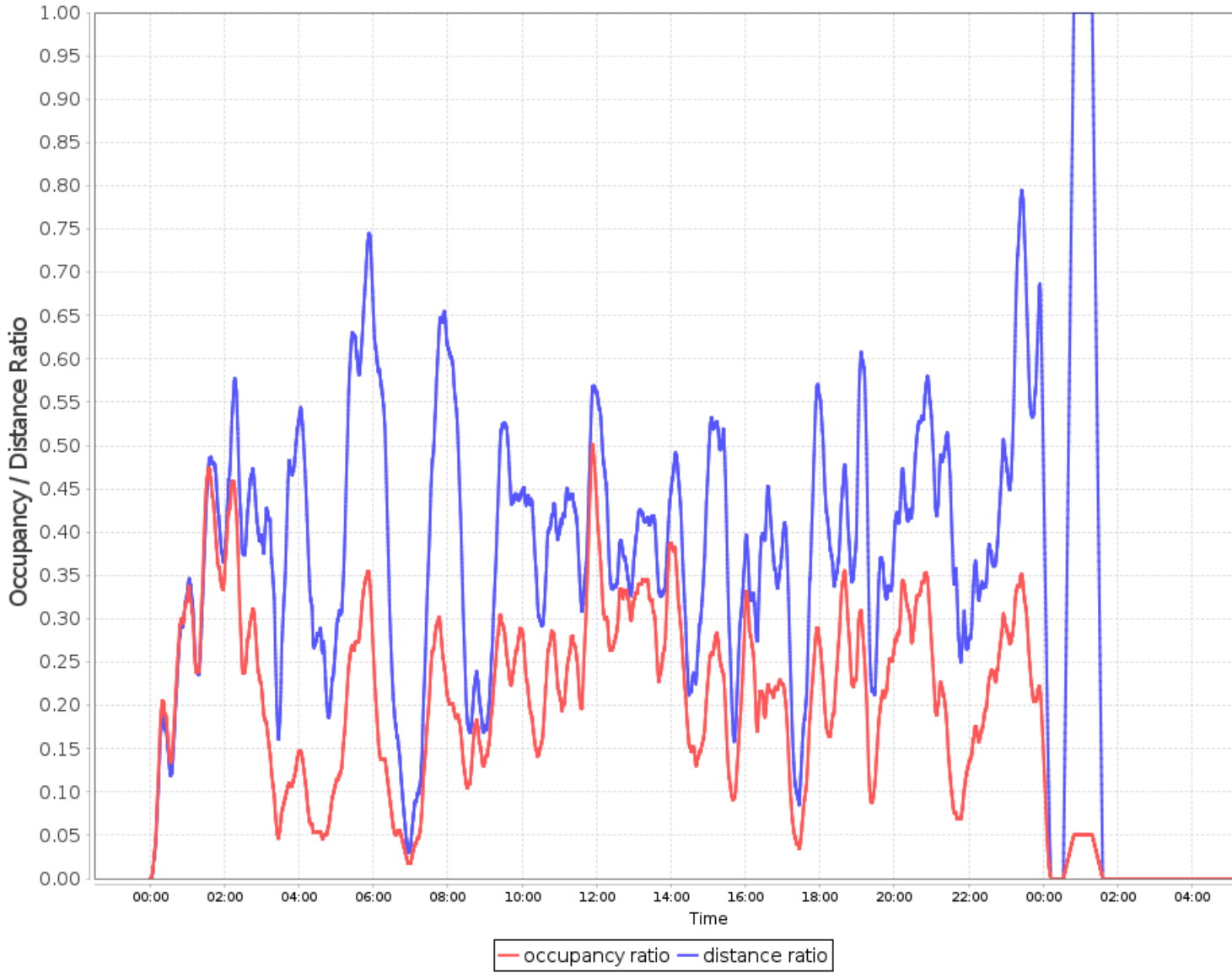
# Fleet Efficiency

## Distance Distribution over Day

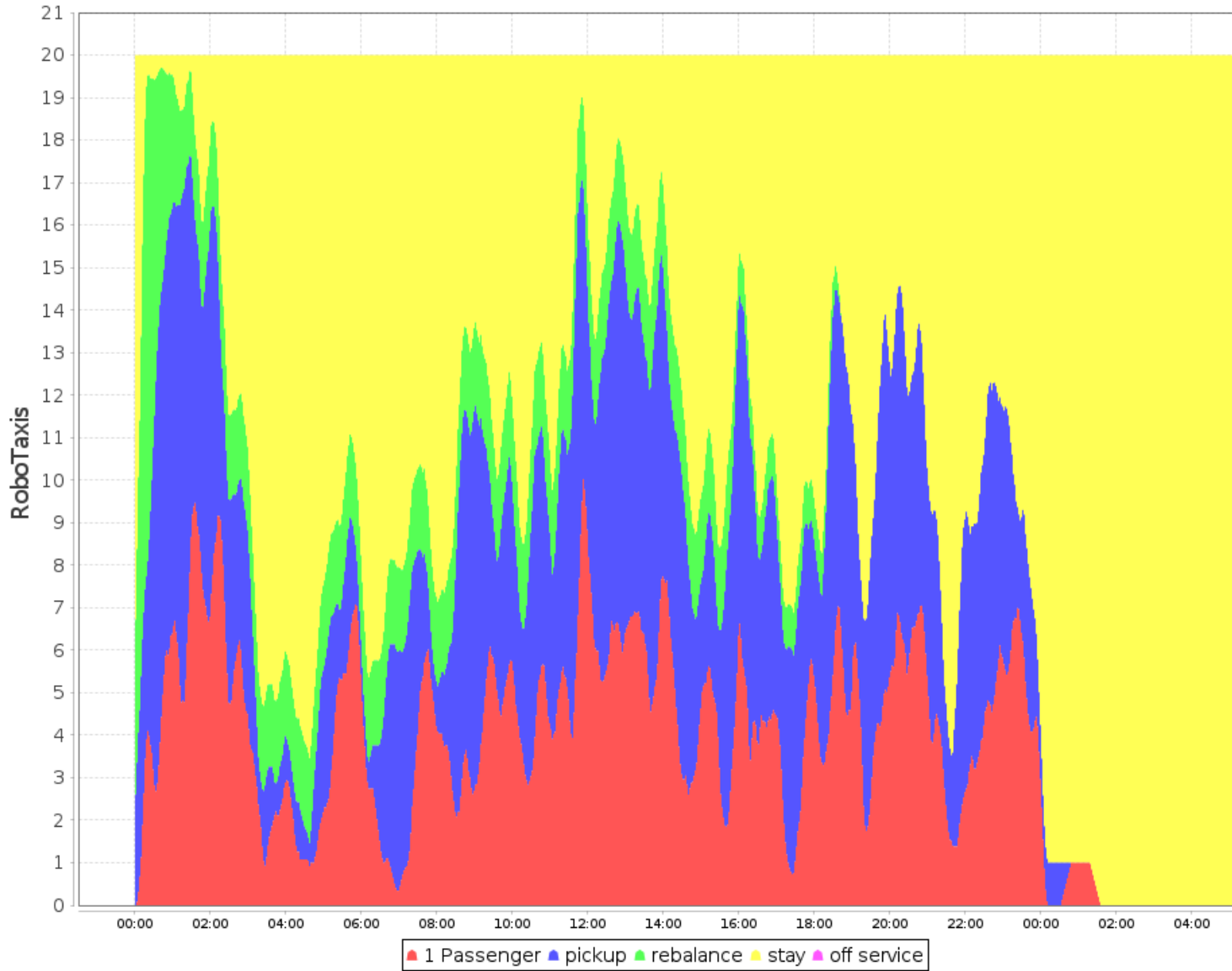




# Occupancy and Distance Ratios



## Number Passengers



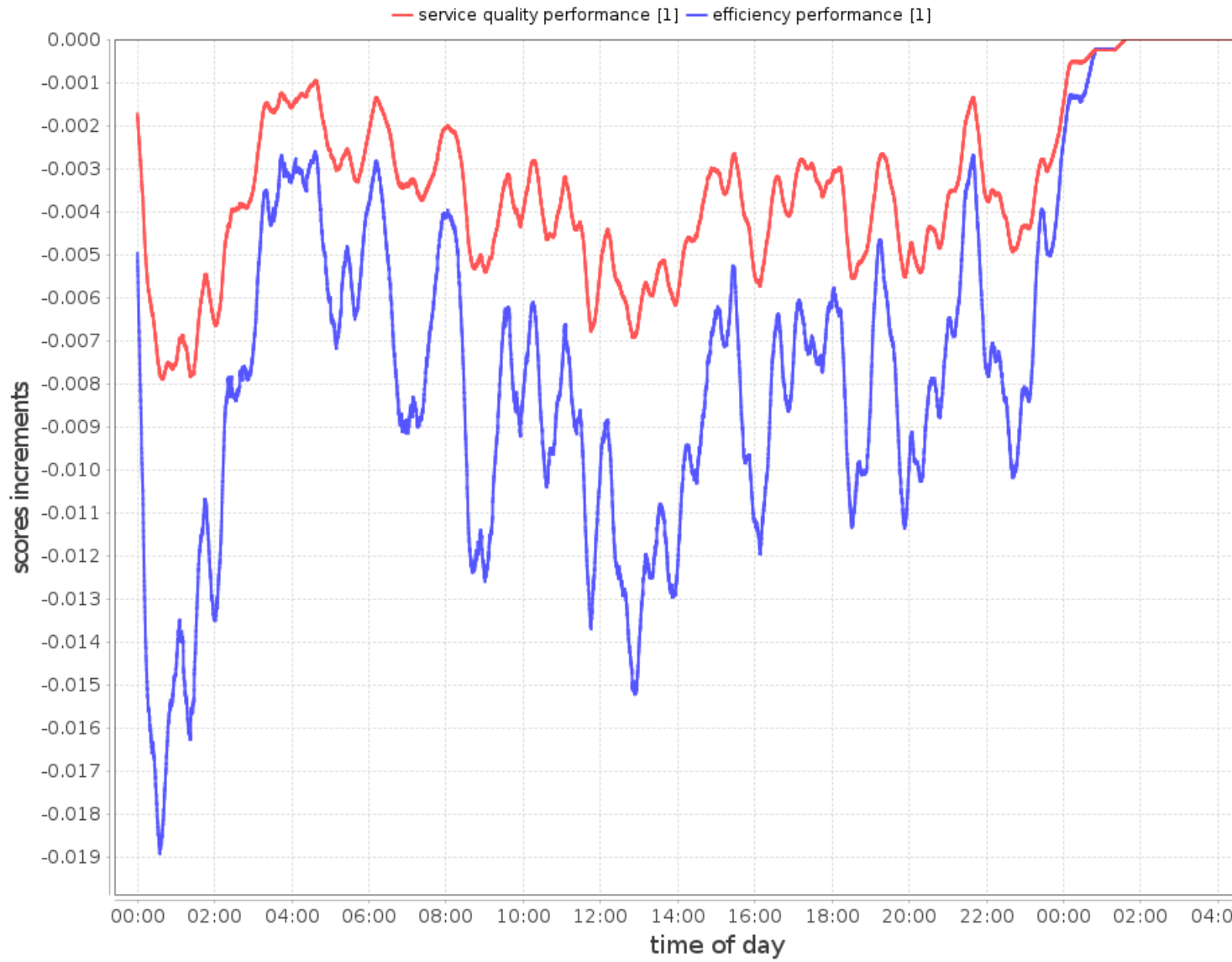
## Ride Sharing Distribution, fraction of Requests



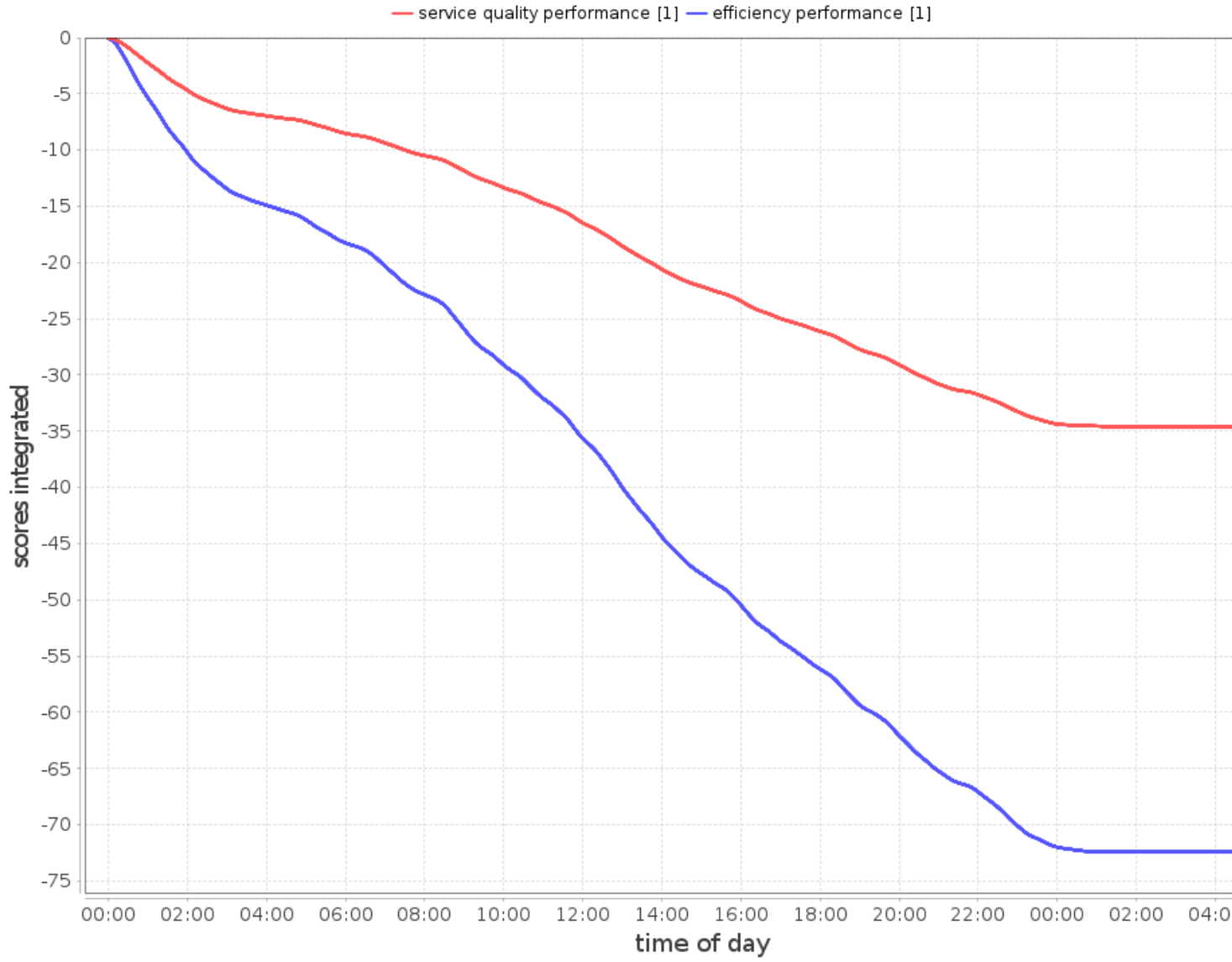
## Aido Scores

Scores during Simulation

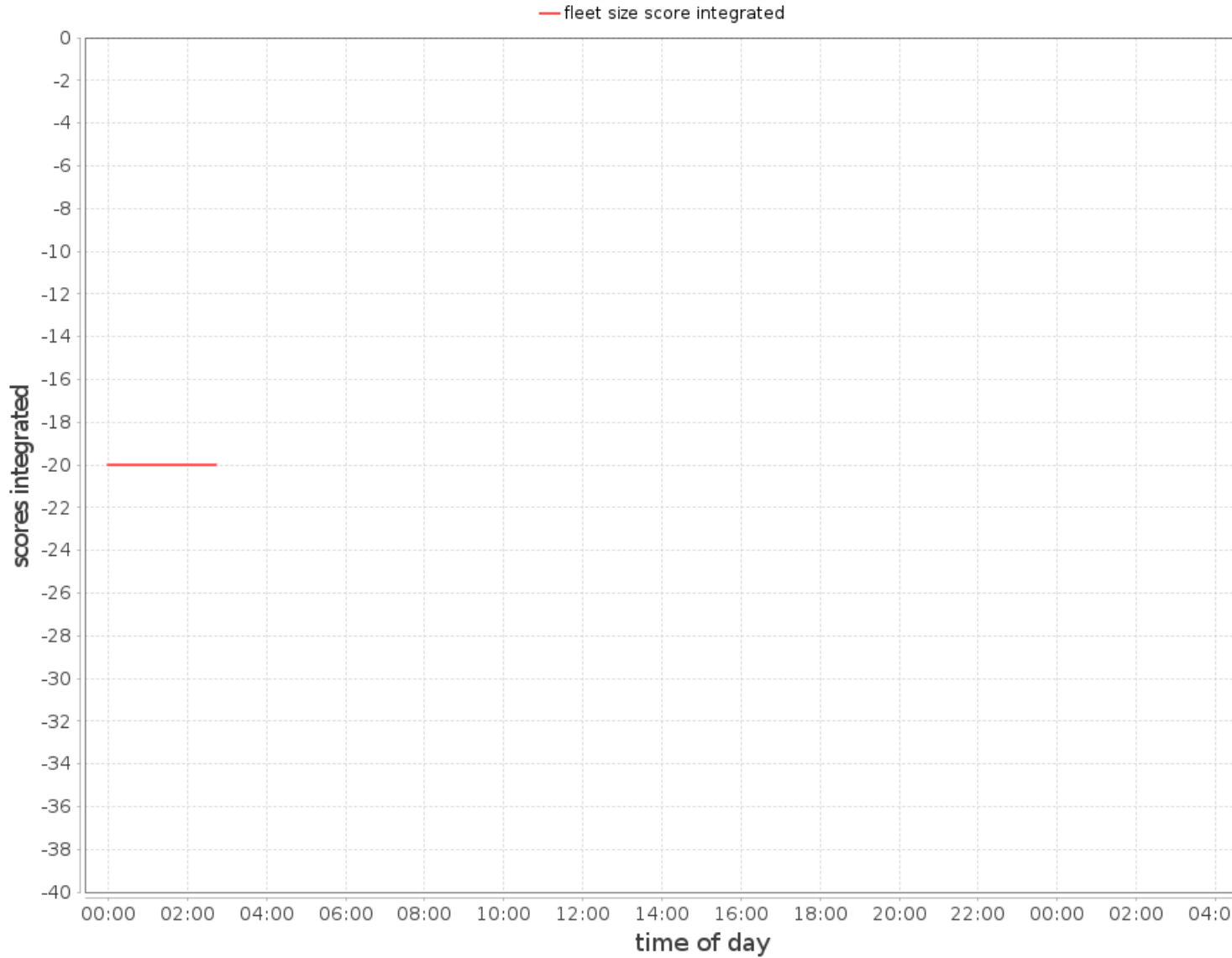
# Service Quality and Efficiency Score Increments



# Service Quality and Efficiency Score Integrated



# Fleet Size Score Integrated



## Final Scores

final service quality score: -34.590523321084206  
final efficiency score: -72.41689328433715  
final fleet size score: -Infinity