



# AMoDeus Simulation Report

## Simulation Information

User: root  
Timestamp: 2019/04/27 - 17:31:25  
  
Iterations: 1 ,i.e., 0 in matsim config.

[AV File](#)   [AV\\_Config File](#)

Dispatcher: AidoDispatcherHost  
Rebalancing Period: -00:00:01  
Redispatching Period: 00:00:10  
  
Network: null\_prepared  
Virtual Nodes: no virtual network found  
Population: 500  
  
Number of Vehicles: 20  
Number of Requests: 500

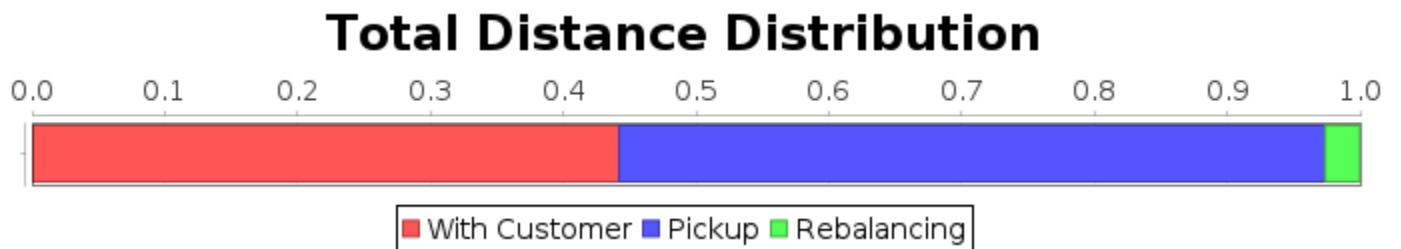
# Aggregated Results

Distance Ratio: 44.22%  
Occupancy Ratio: 17.86 %

## Distances

Total: 18535.31 km  
Rebalancing: 485.19 km (2.62%)  
Pickup: 9854.65 km (53.17%)  
With Customer: 8195.47 km (44.22%)

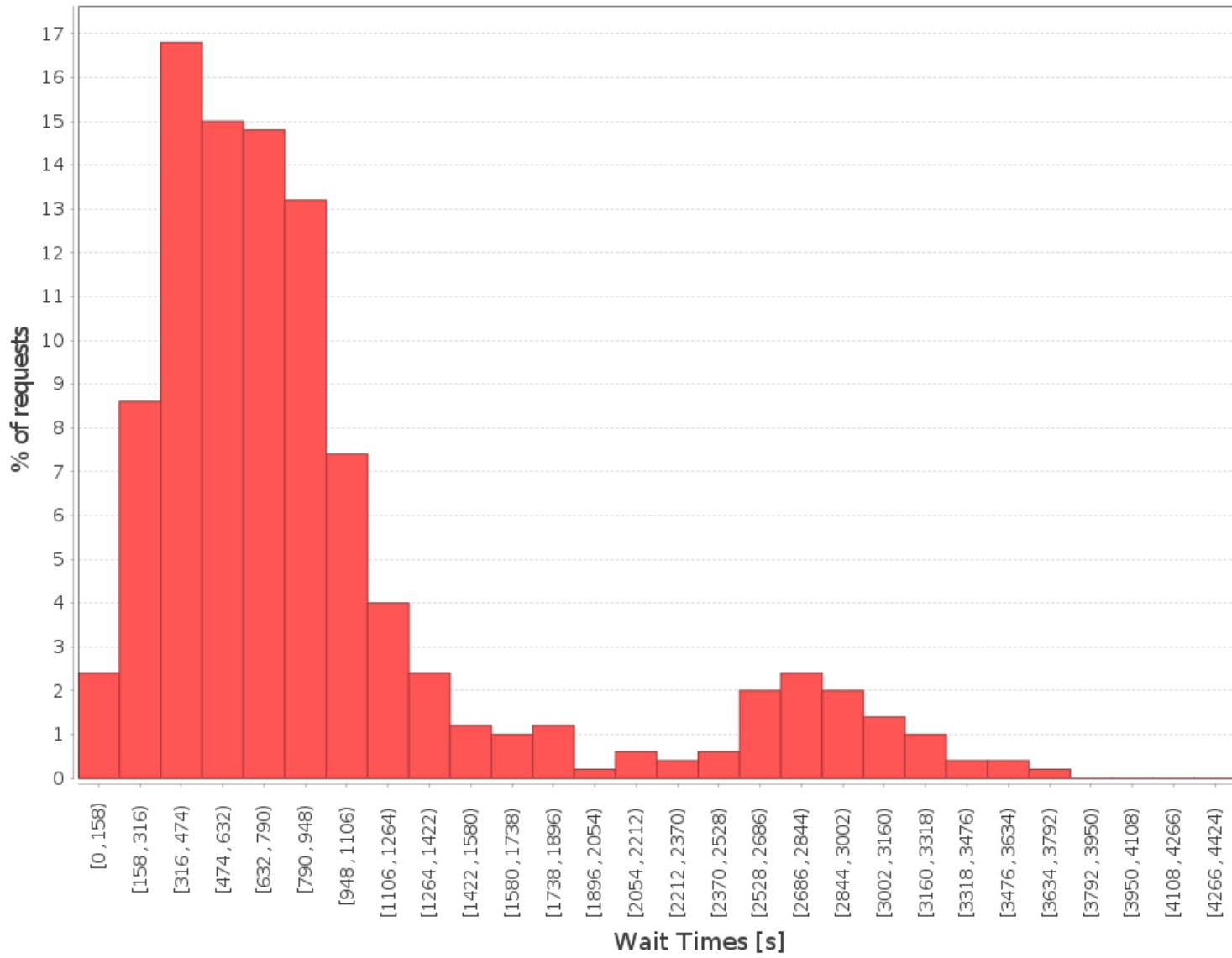
Average Trip Distance: 16.39 km



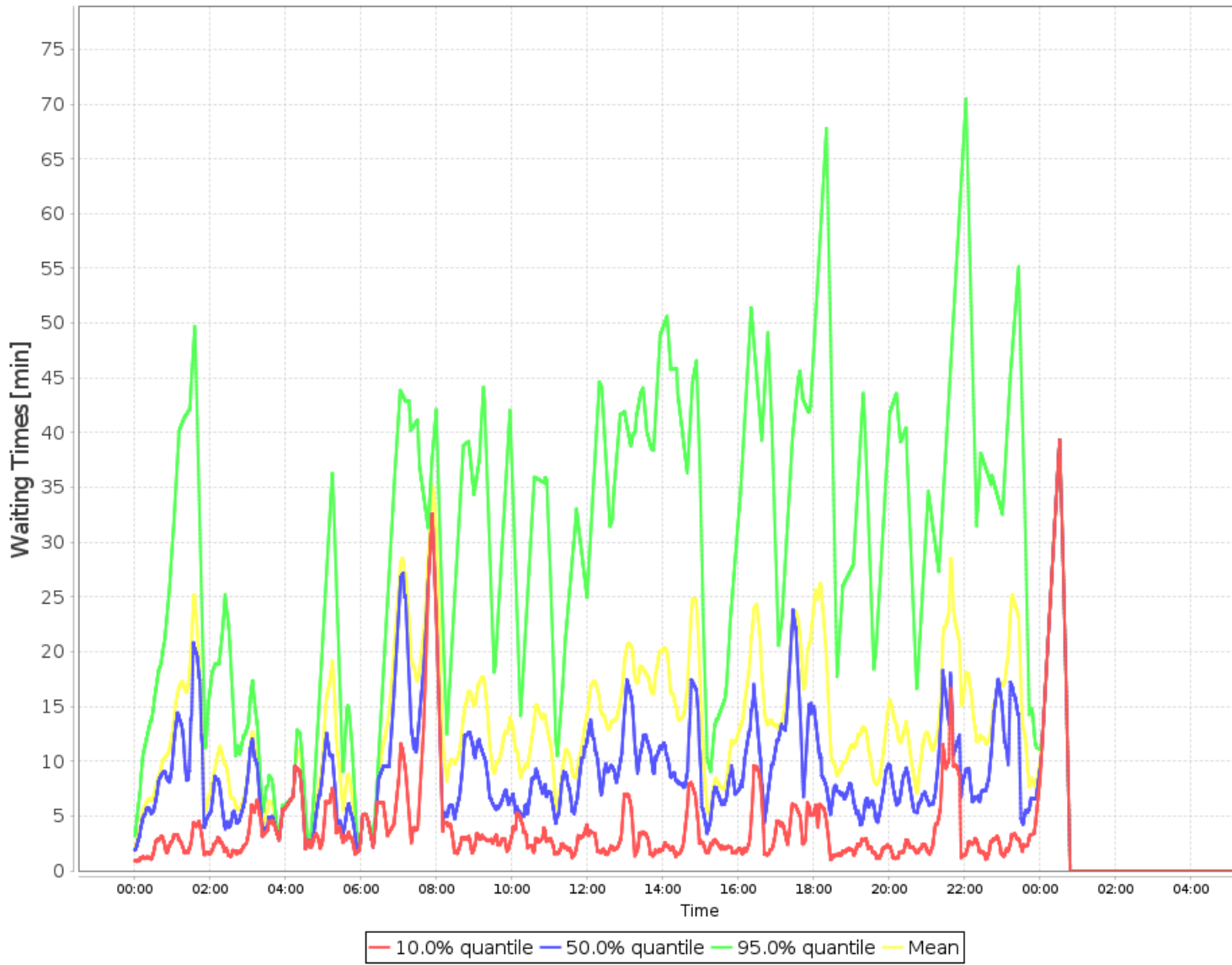
## Wait Times

10.0% quantile: 00:05:04  
50.0% quantile: 00:11:46  
95.0% quantile: 00:47:45  
Mean: 00:15:51  
Maximum: 01:18:59

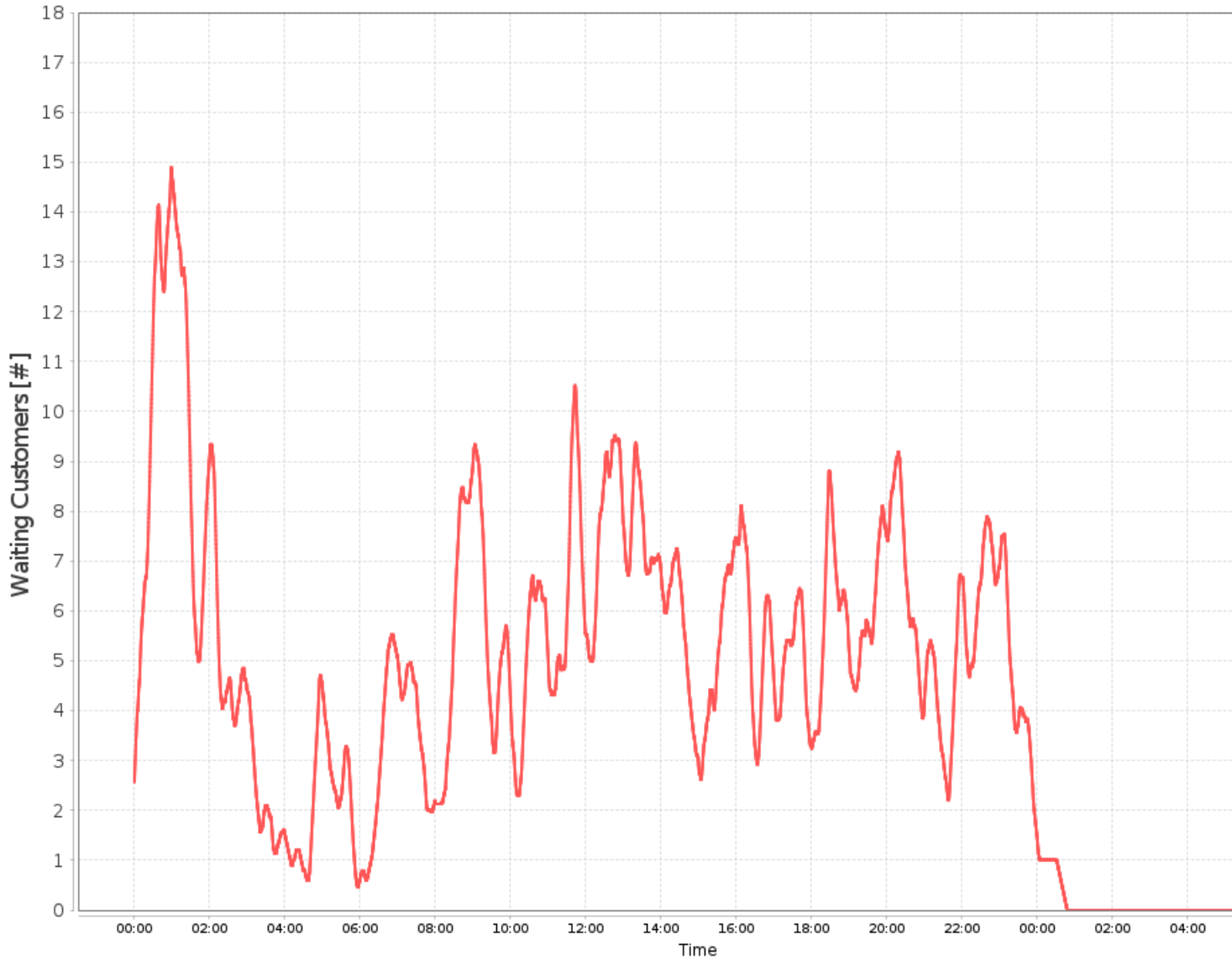
# Number of Requests per Wait Time



# Binned Waiting Times



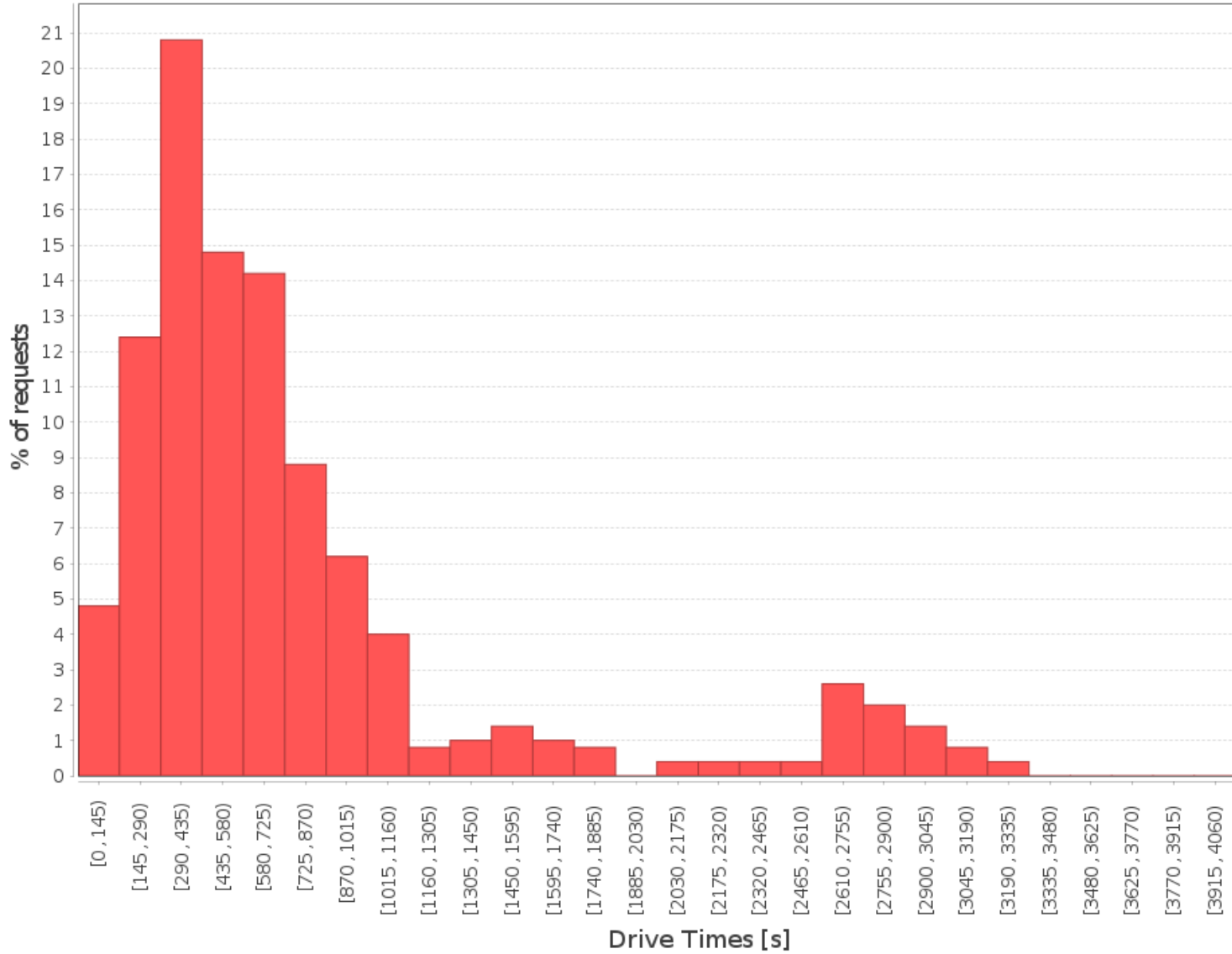
## Waiting Customers per Day Time



### Drive Times

10.0% quantile	00:03:30
50.0% quantile	00:09:10
95.0% quantile	00:45:30
Mean	00:12:51
Maximum:	01:12:20

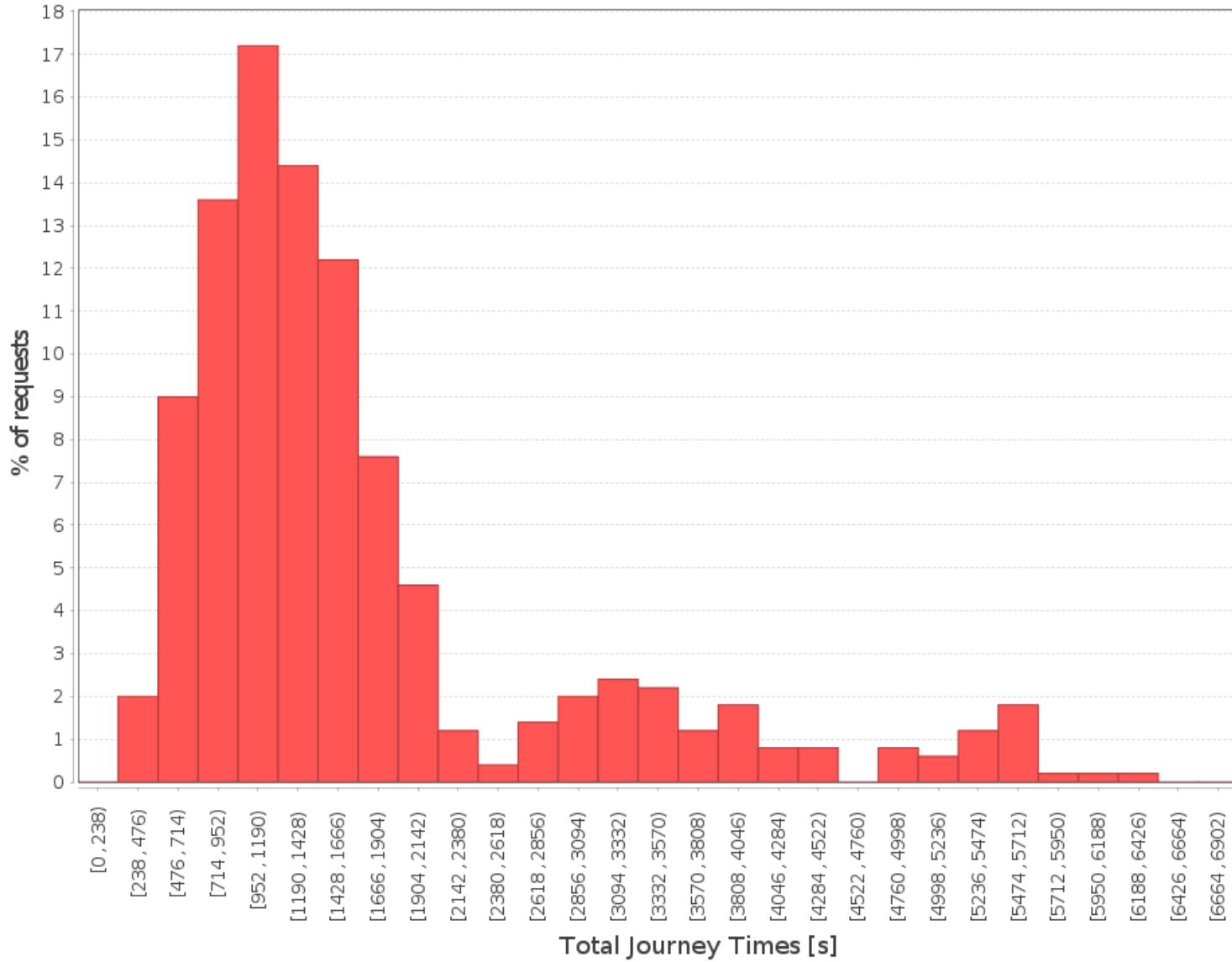
## Number of Requests per Drive Time



### Total Journey Times

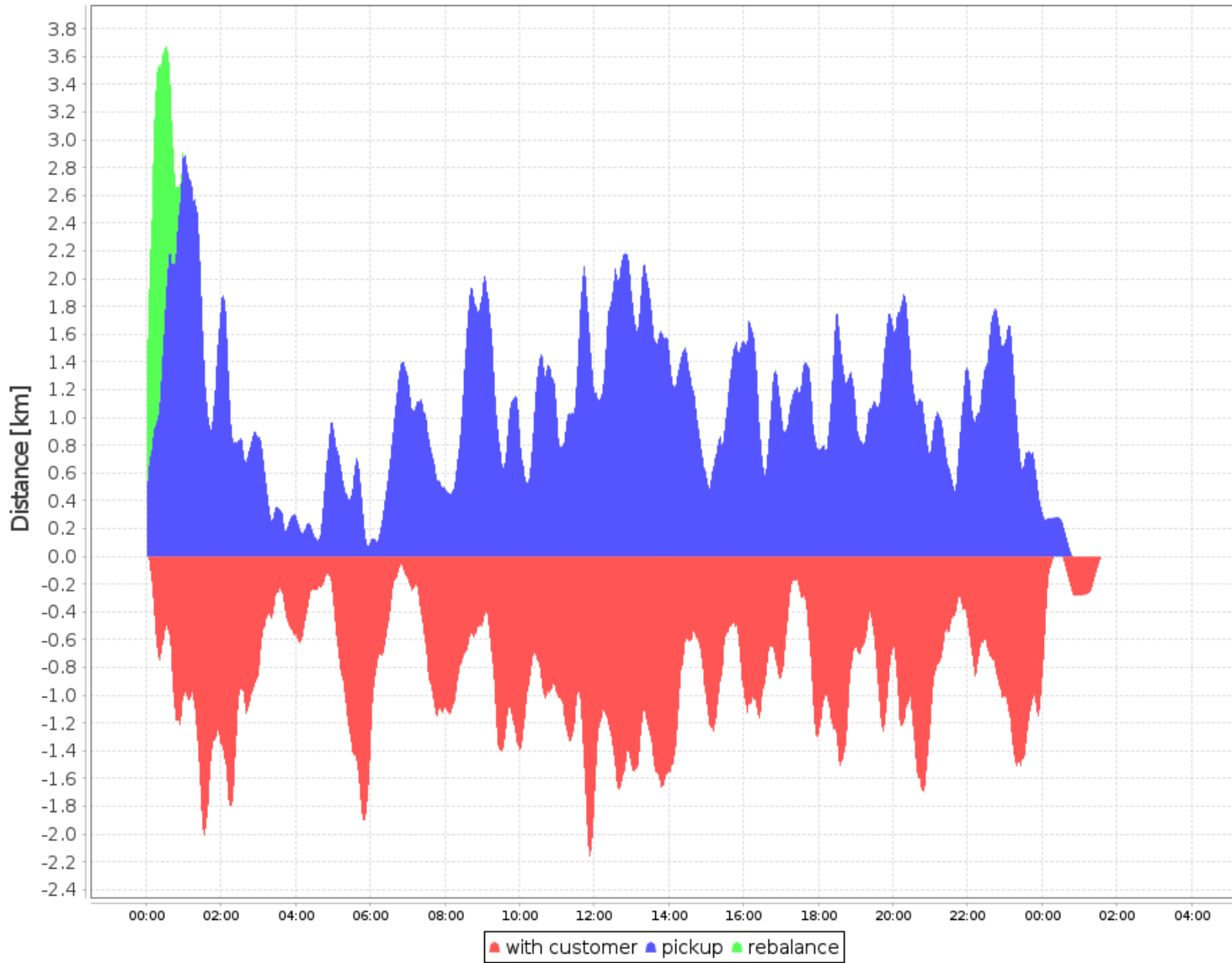
10.0% quantile	00:11:25
50.0% quantile	00:22:03
95.0% quantile	01:19:47
Mean	00:28:42
Maximum:	01:59:06

# Number of Requests per Total Journey Time



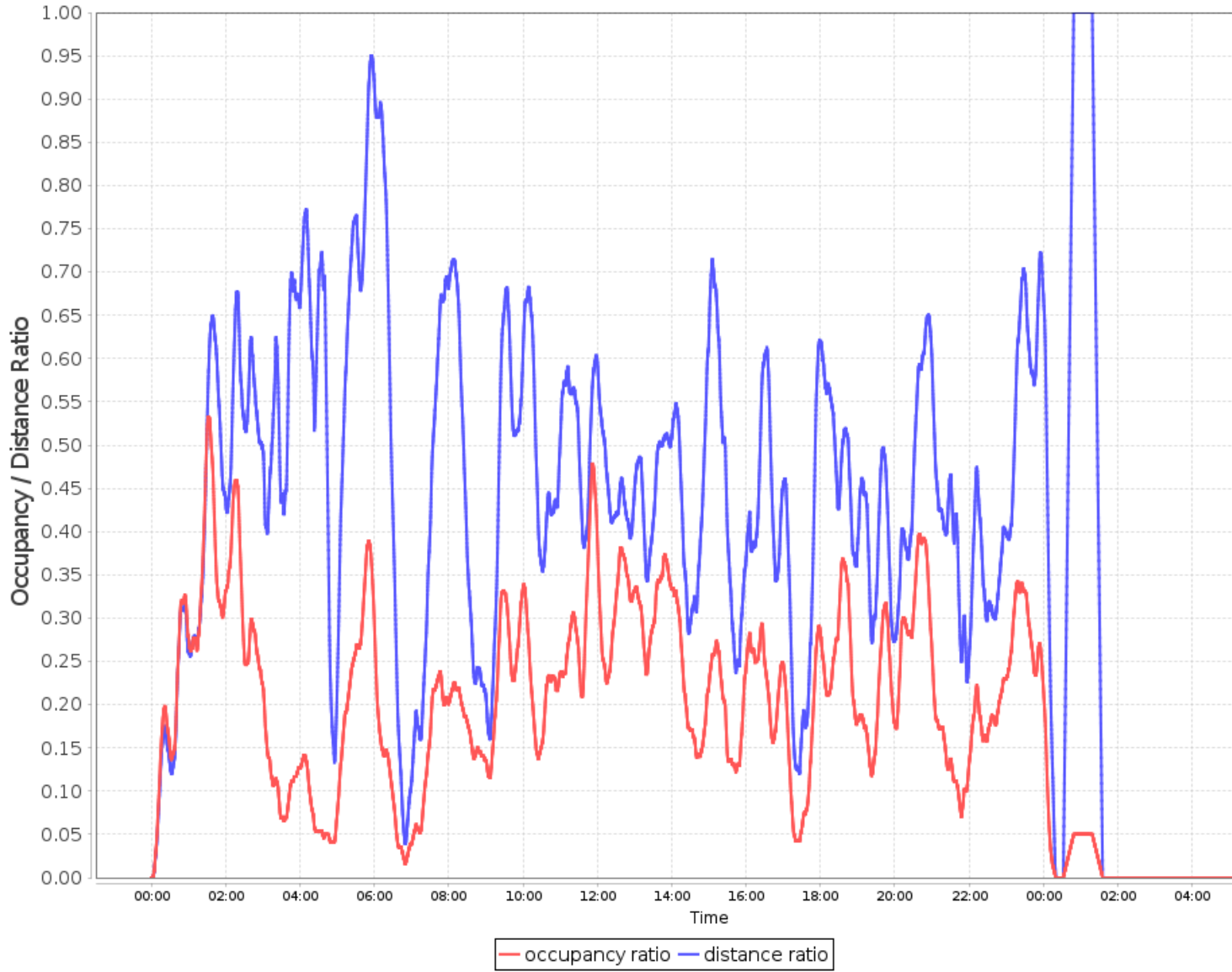
# Fleet Efficiency

## Distance Distribution over Day

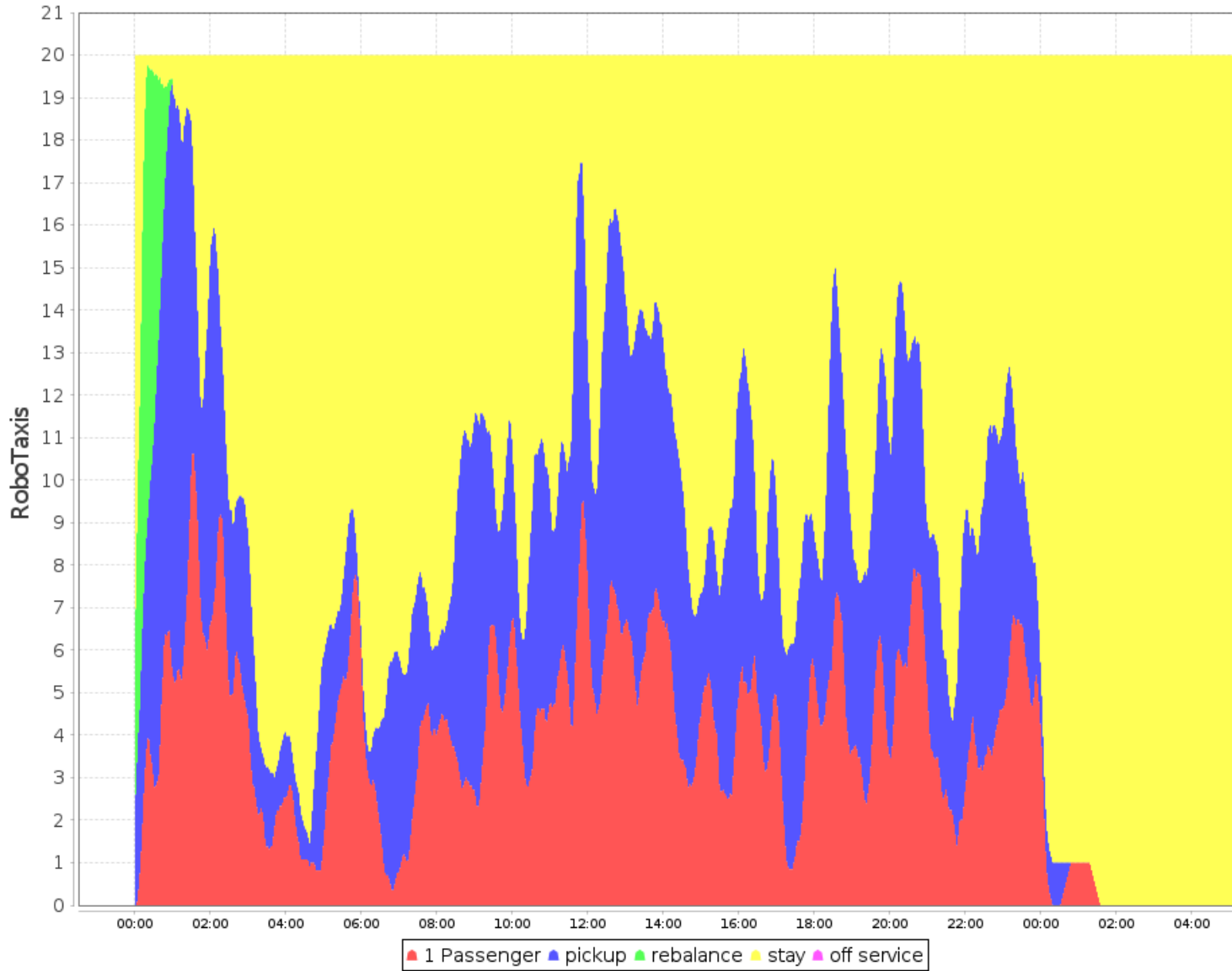




# Occupancy and Distance Ratios



## Number Passengers



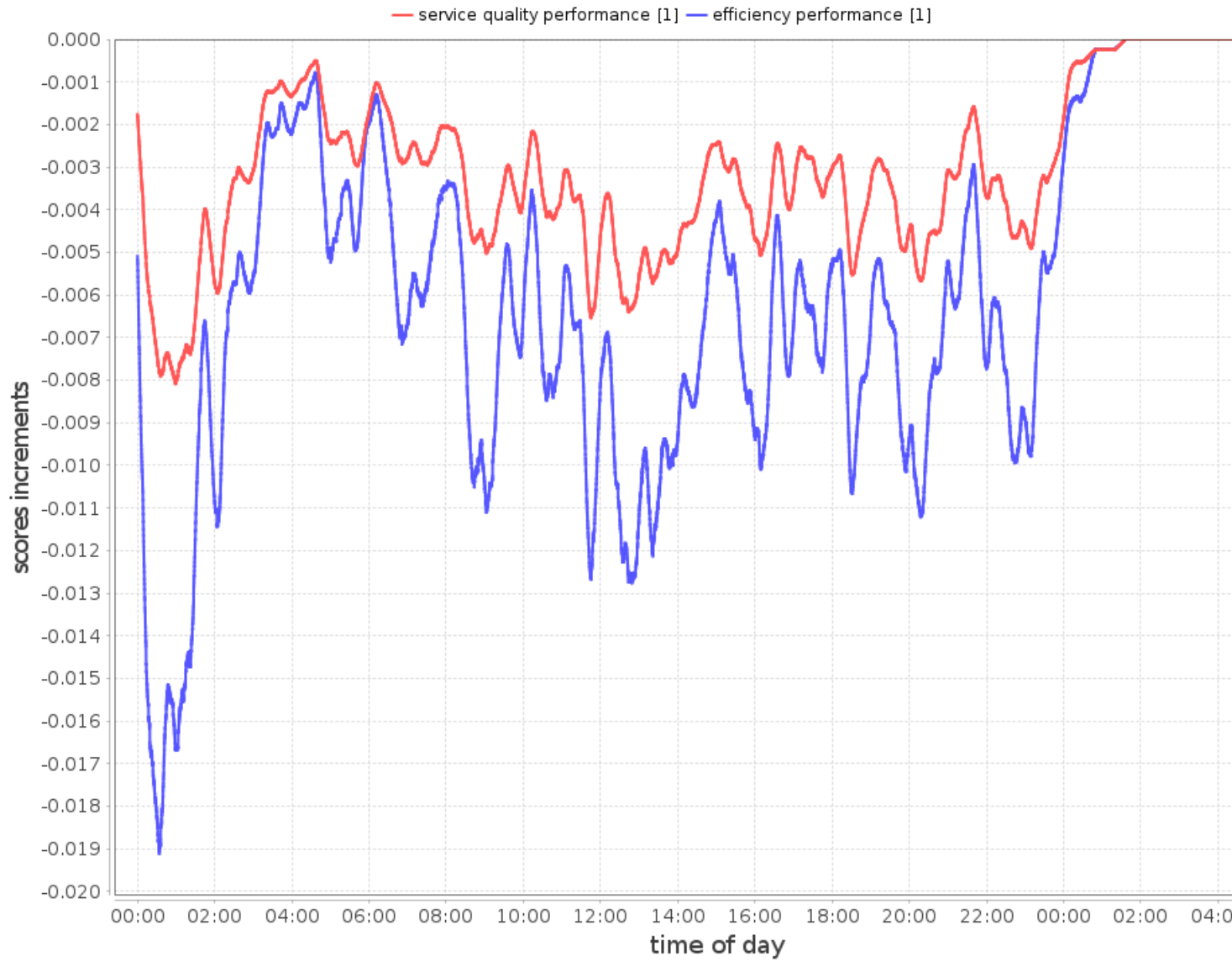
## Ride Sharing Distribution, fraction of Requests



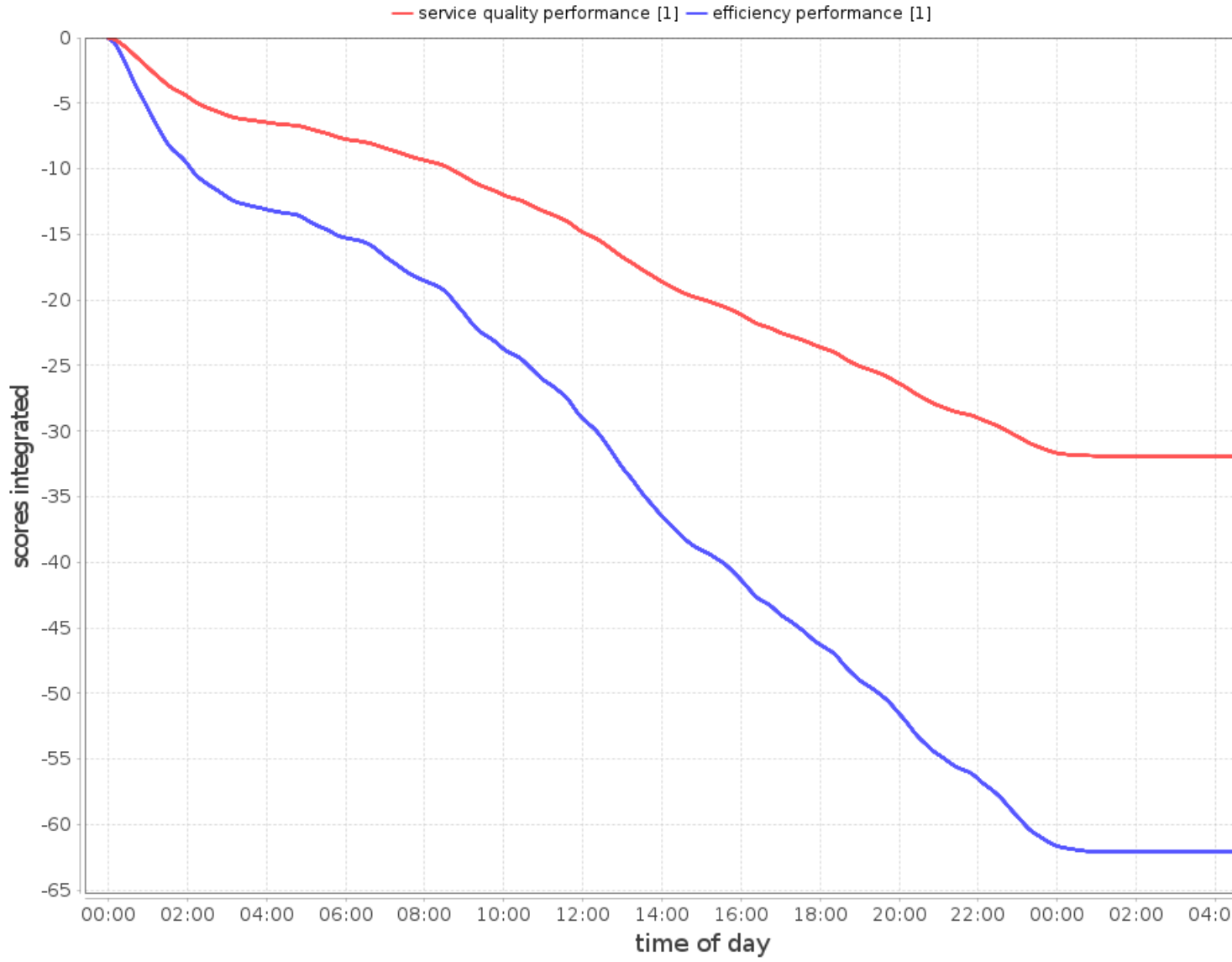
## Aido Scores

Scores during Simulation

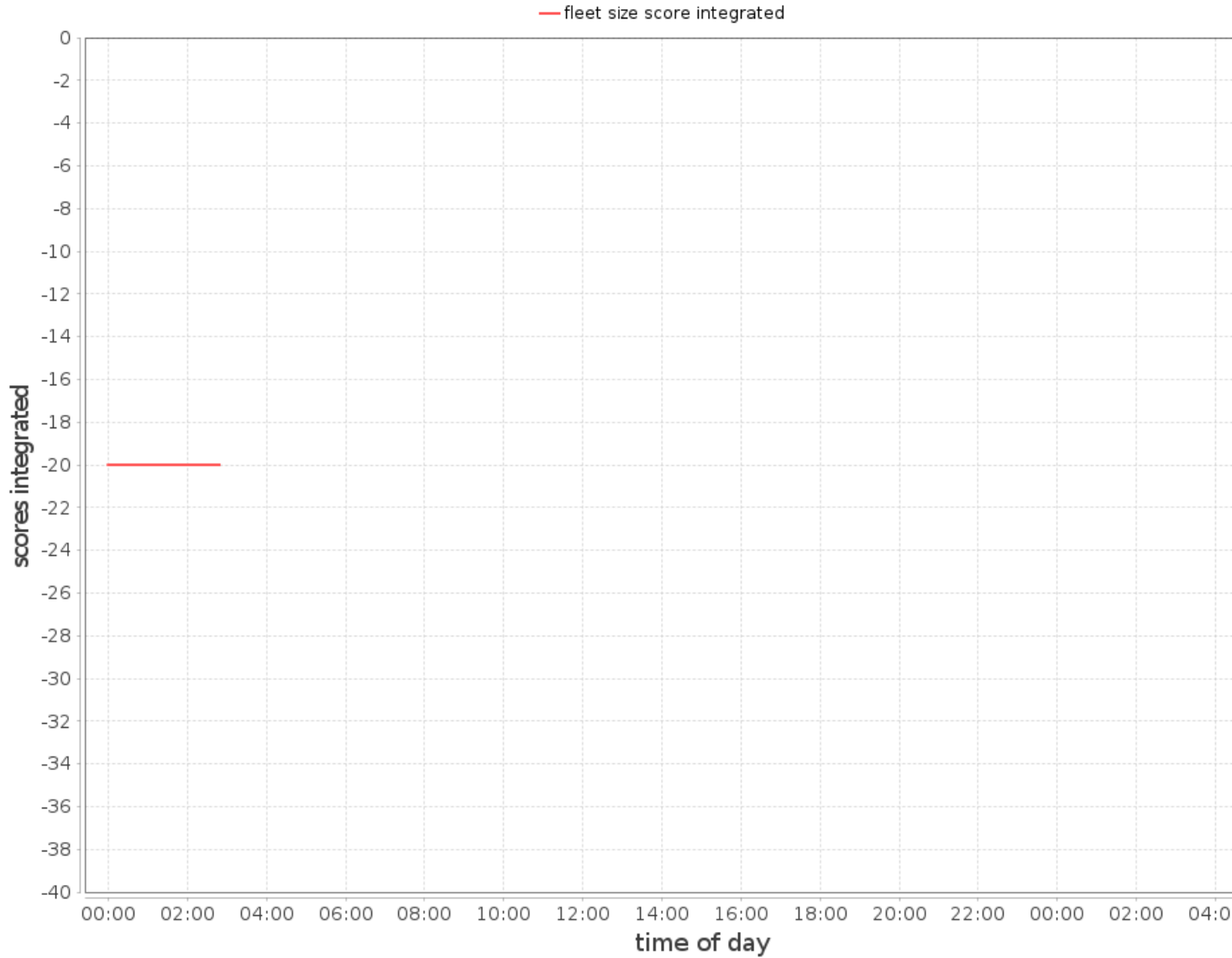
# Service Quality and Efficiency Score Increments



# Service Quality and Efficiency Score Integrated



# Fleet Size Score Integrated



## Final Scores

final service quality score: -31.93378814294586  
final efficiency score: -62.089392571780806  
final fleet size score: -Infinity