



AMoDeus Simulation Report

Simulation Information

User: root
Timestamp: 2018/12/01 - 15:14:50

Iterations: 1 ,i.e., 0 in matsim config.

[AV File](#) [AV_Config File](#)

Dispatcher: AidoDispatcherHost
Rebalancing Period: -00:00:01
Redispatching Period: 00:00:10

Network: null_prepared
Virtual Nodes: no virtual network found
Population: 500

Number of Vehicles: 20
Number of Requests: 500

Aggregated Results

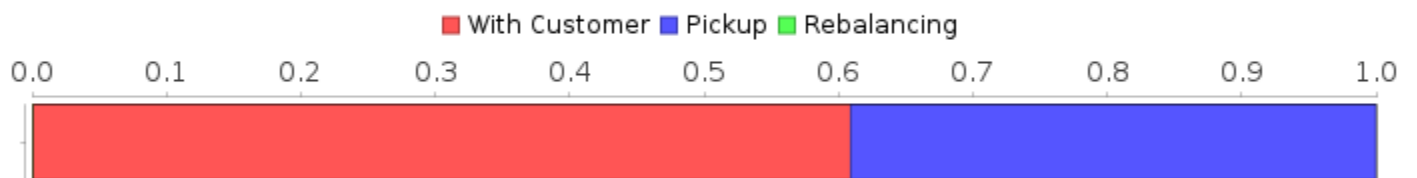
Distance Ratio: 60.93%
Occupancy Ratio: 17.87 %

Distances

Total: 13443.48 km
Rebalancing: 0.00 km (0.00%)
Pickup: 5252.20 km (39.07%)
With Customer: 8191.28 km (60.93%)

Average Trip Distance: 16.38 km

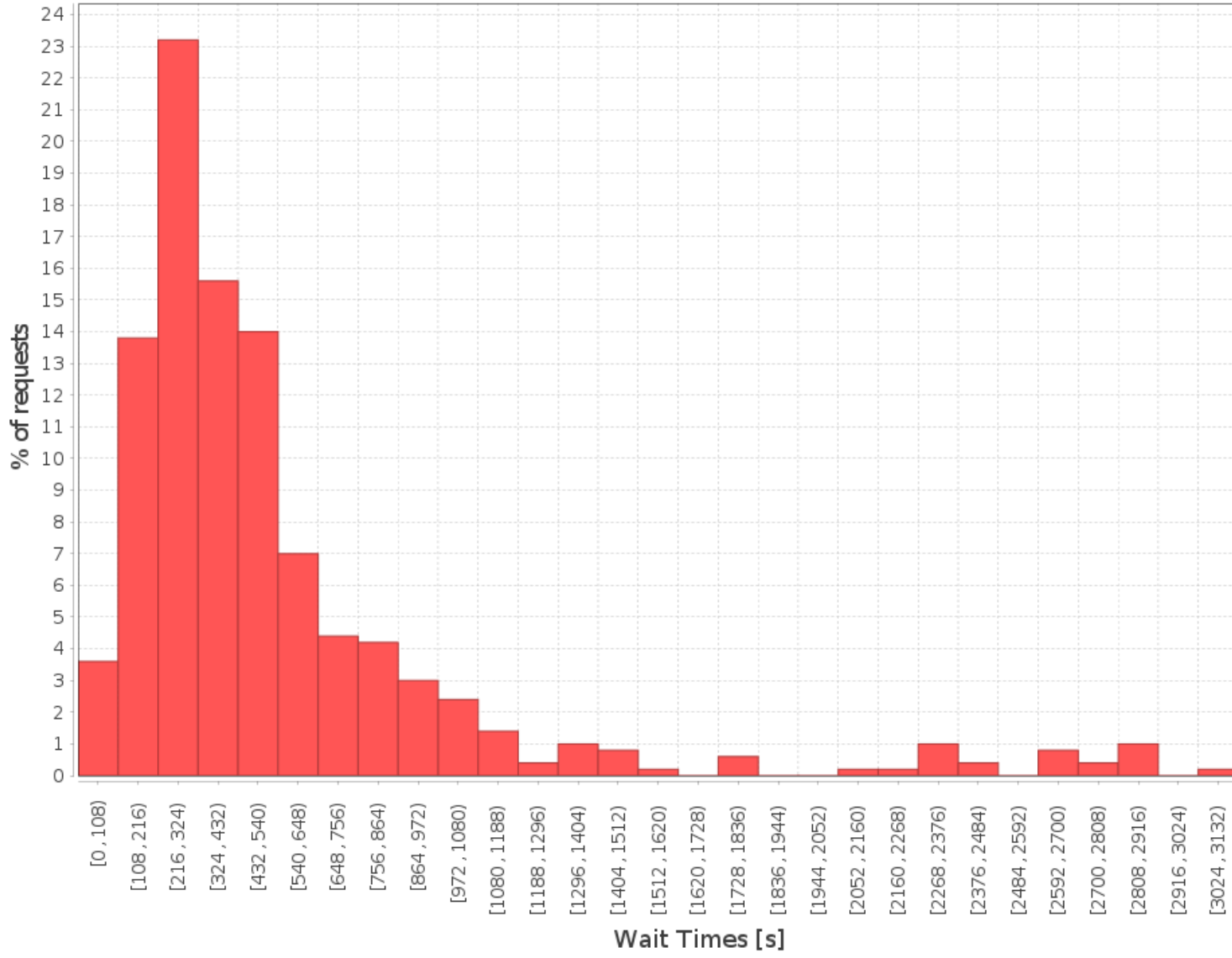
Total Distance Distribution



Wait Times

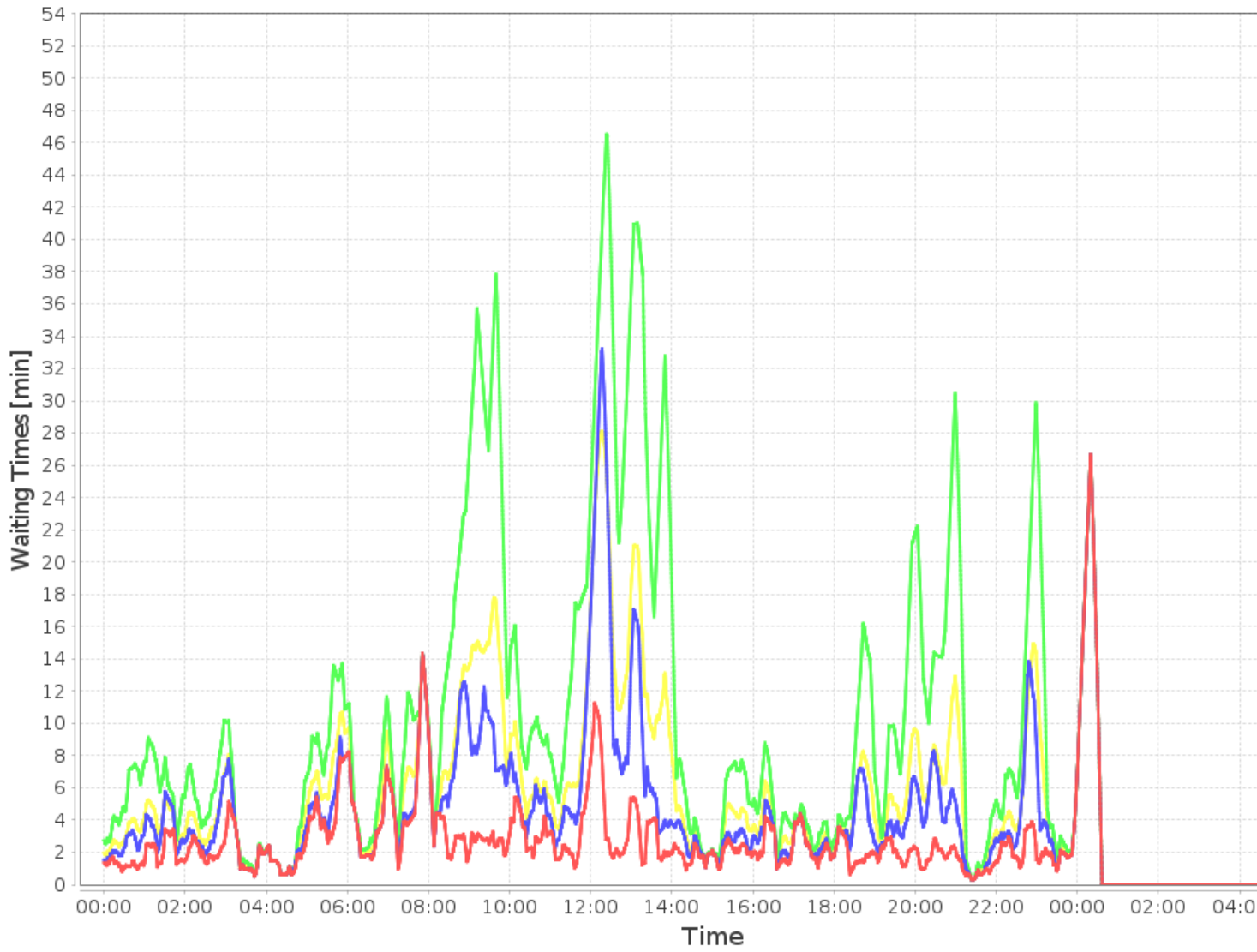
10.0% quantile: 00:02:45
50.0% quantile: 00:06:35
95.0% quantile: 00:25:56
Mean: 00:09:08
Maximum: 00:54:04

Number of Requests per Wait Time

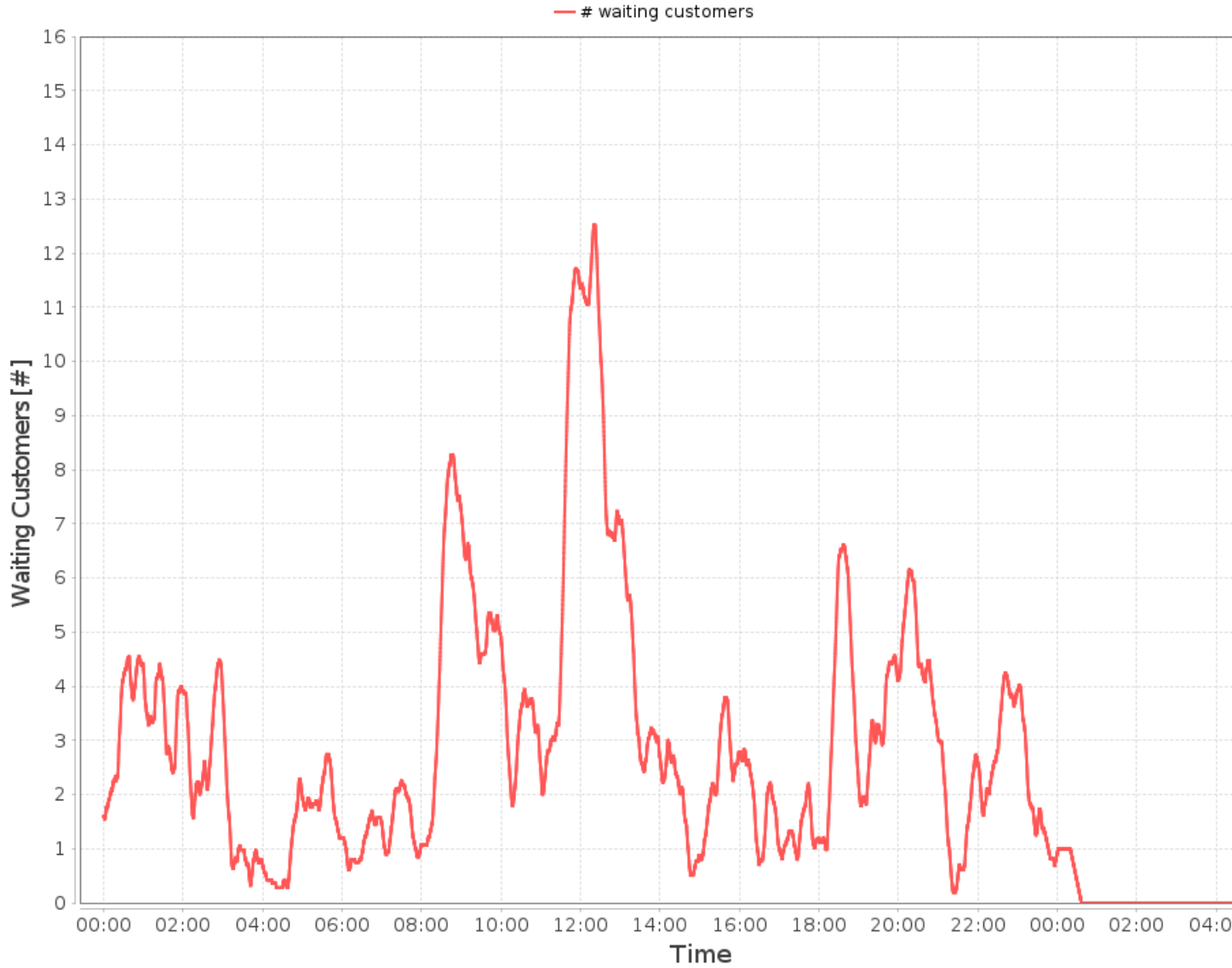


Binned Waiting Times

— 10.0% quantile — 50.0% quantile — 95.0% quantile — Mean



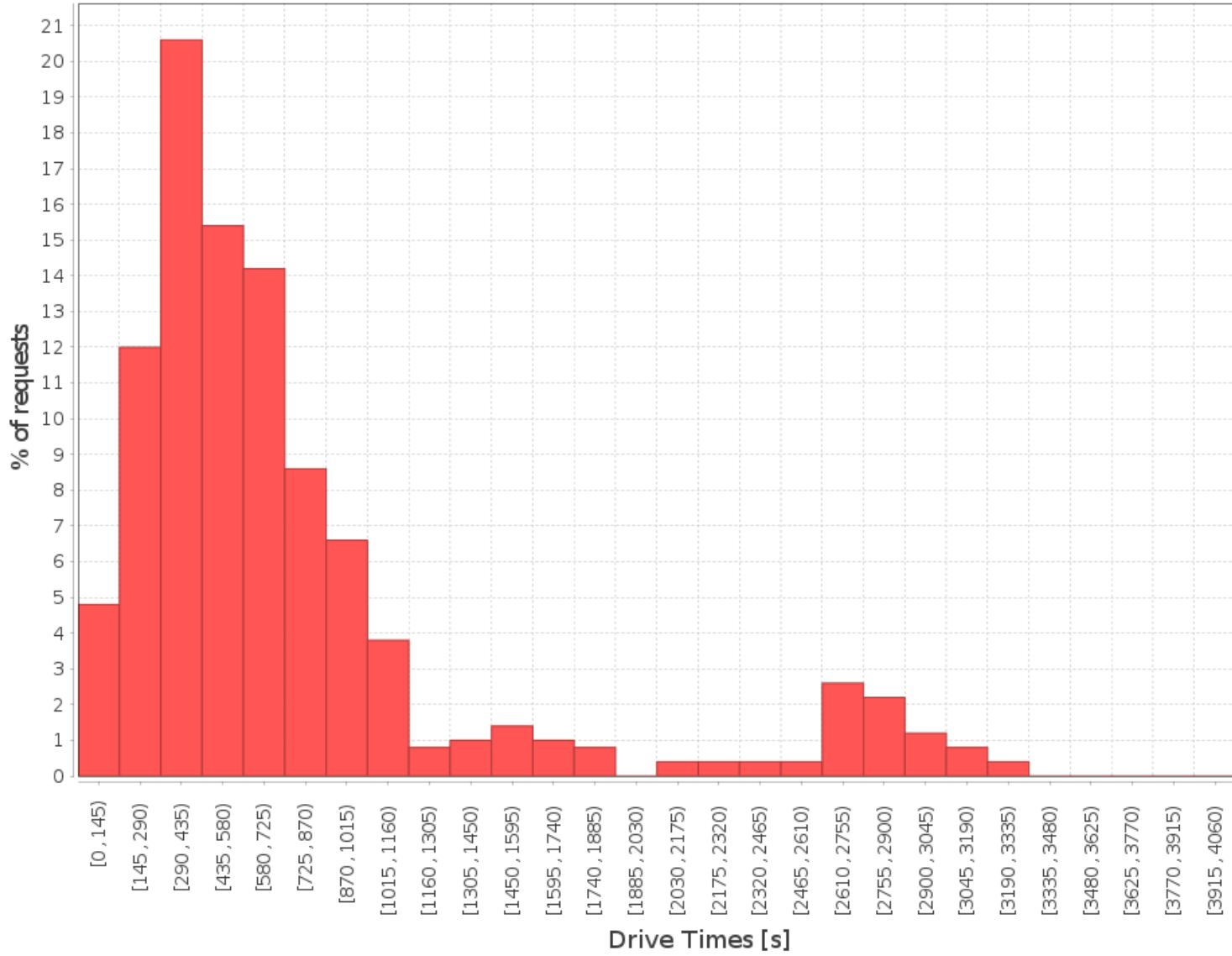
Waiting Customers per Day Time



Drive Times

| | |
|----------------|----------|
| 10.0% quantile | 00:03:30 |
| 50.0% quantile | 00:09:10 |
| 95.0% quantile | 00:45:30 |
| Mean | 00:12:51 |
| Maximum: | 01:12:20 |

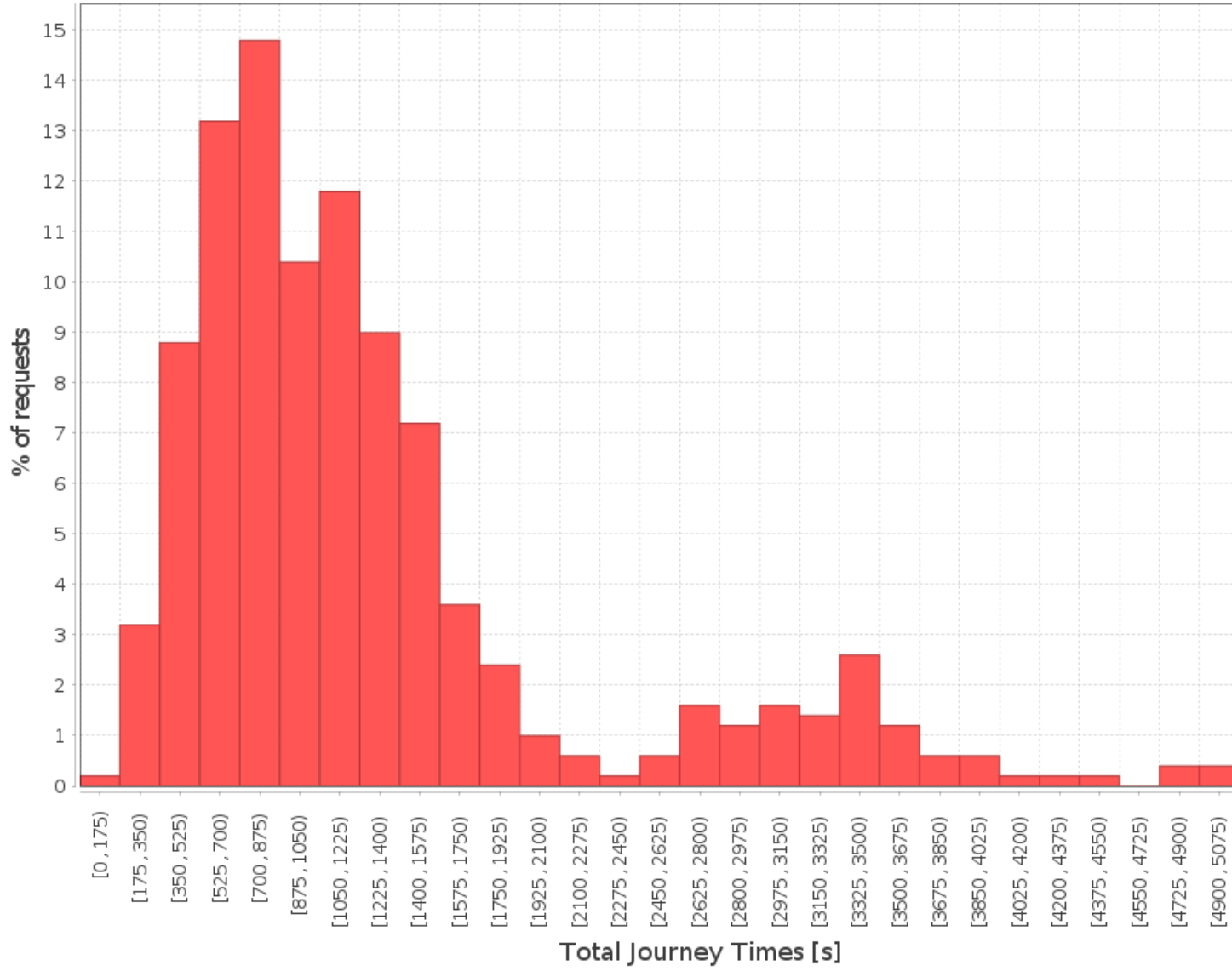
Number of Requests per Drive Time



Total Journey Times

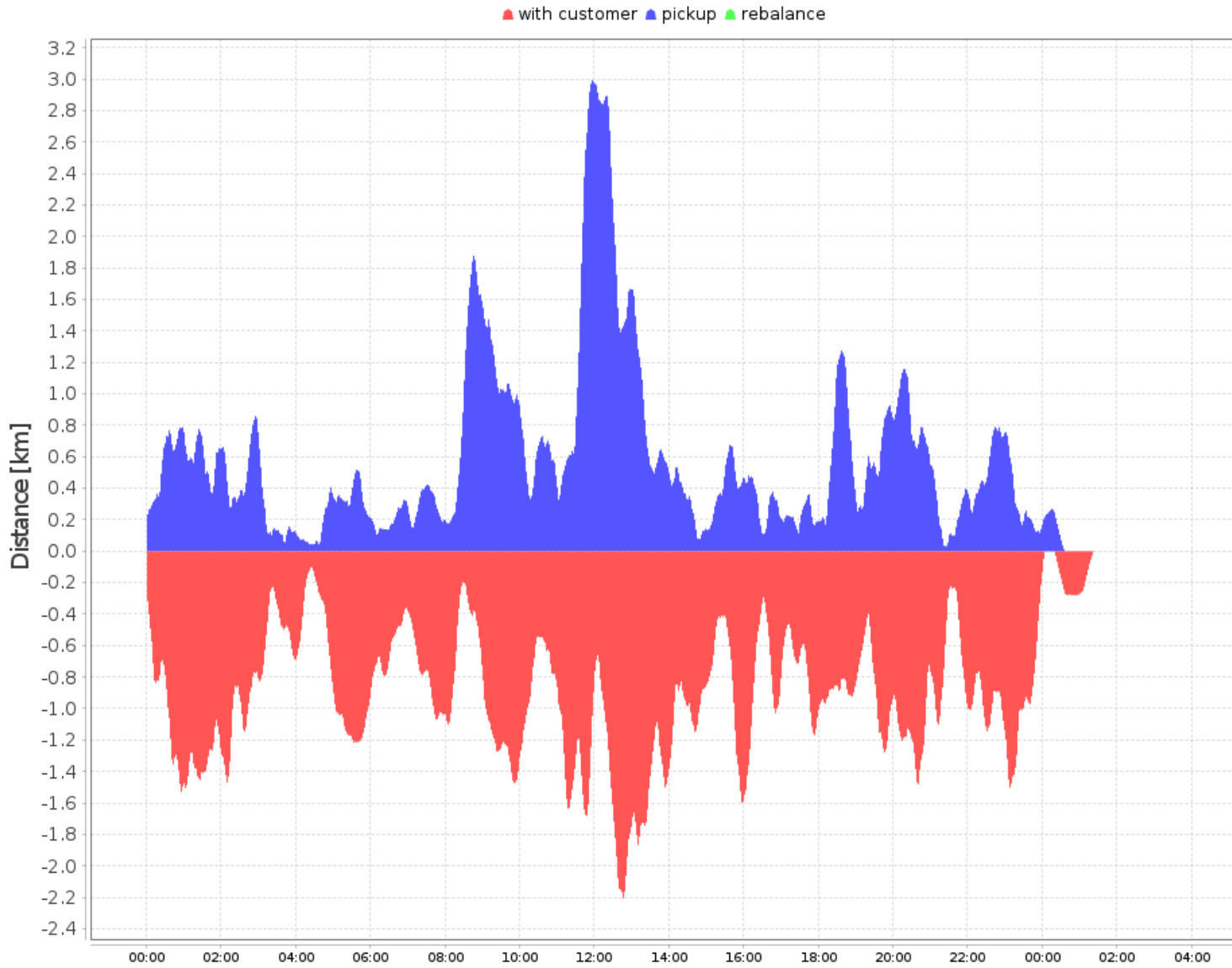
| | |
|----------------|----------|
| 10.0% quantile | 00:08:14 |
| 50.0% quantile | 00:17:23 |
| 95.0% quantile | 00:57:16 |
| Mean | 00:21:59 |
| Maximum: | 01:27:43 |

Number of Requests per Total Journey Time

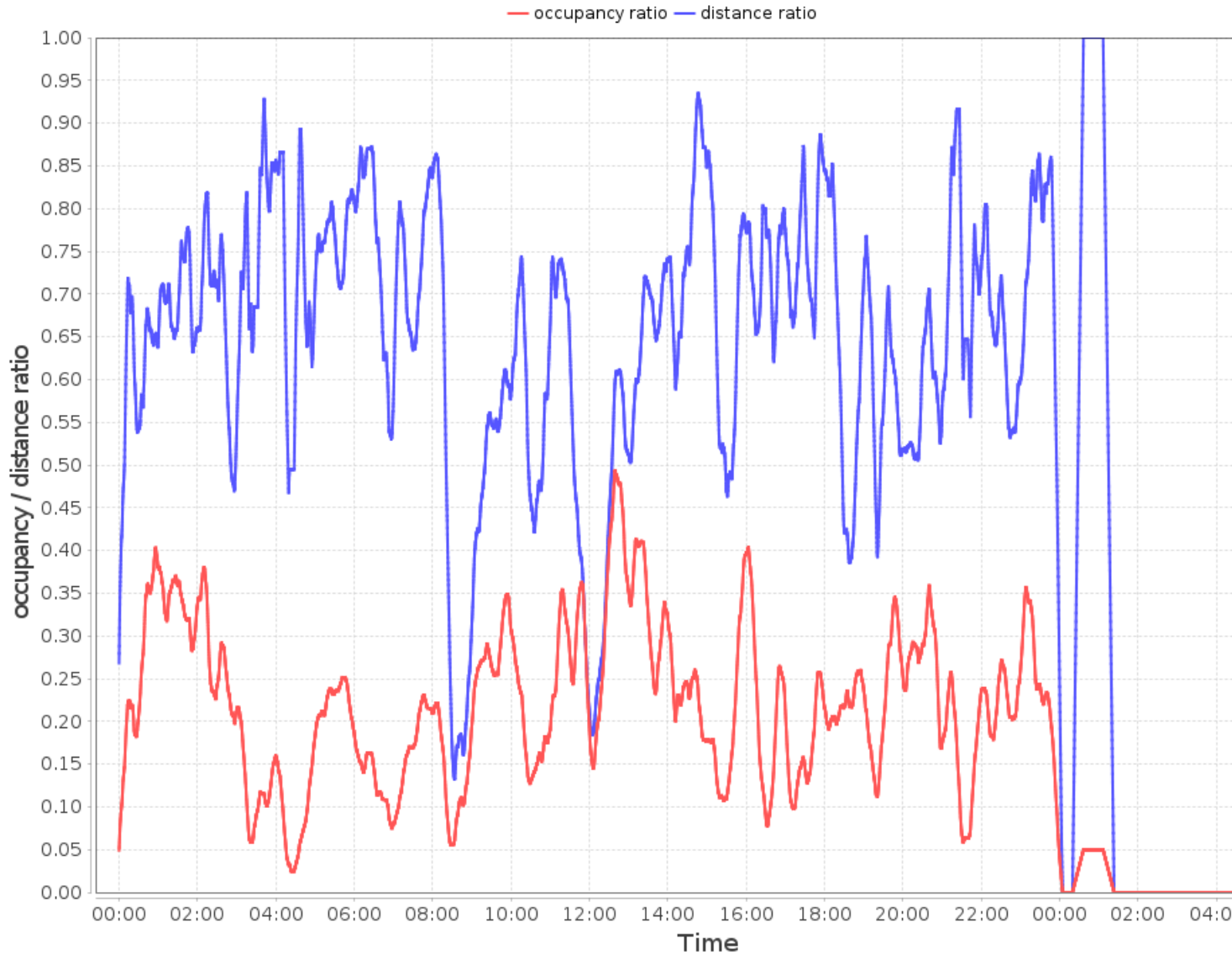


Fleet Efficiency

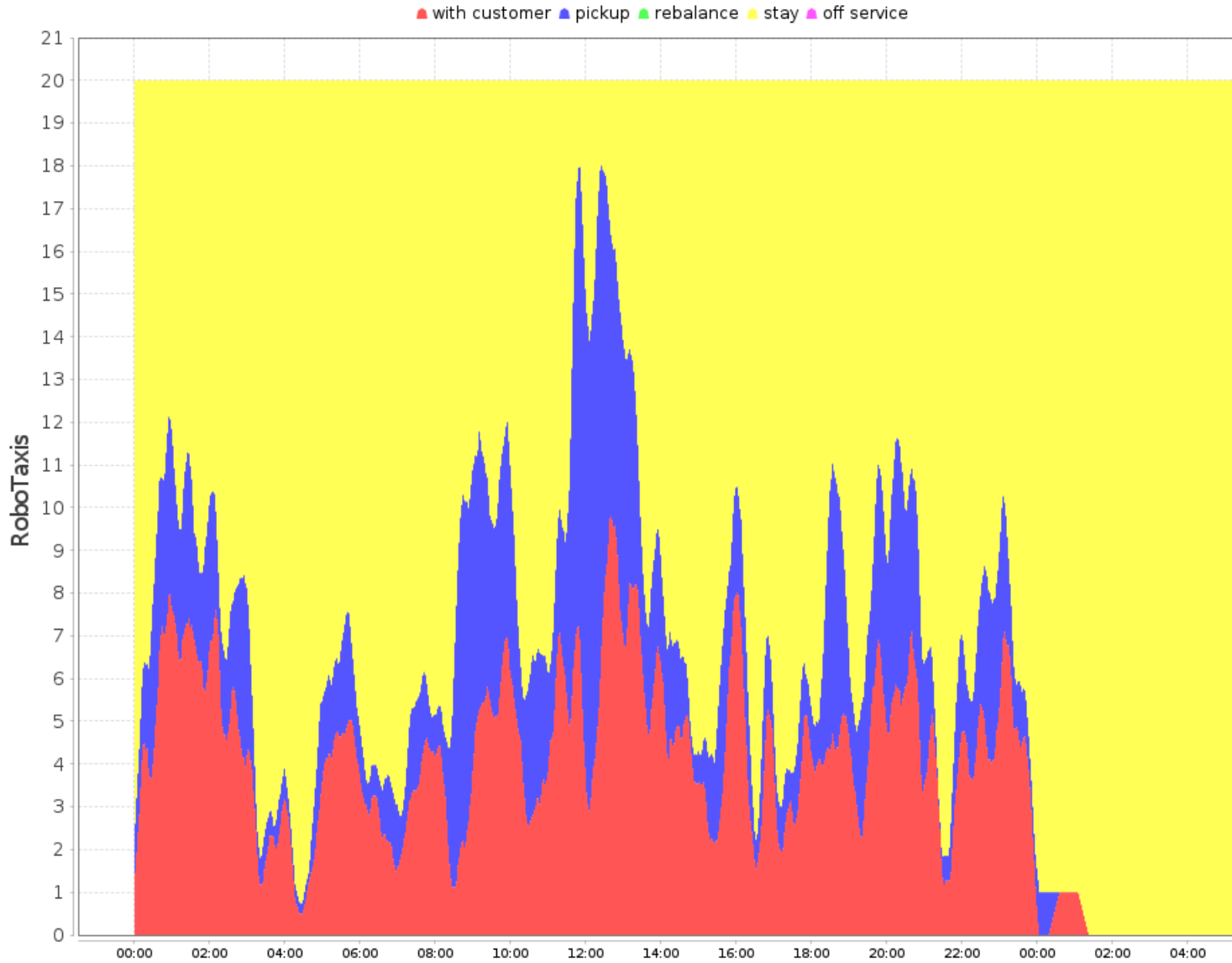
Distance Distribution over Day



Occupancy and Distance Ratios



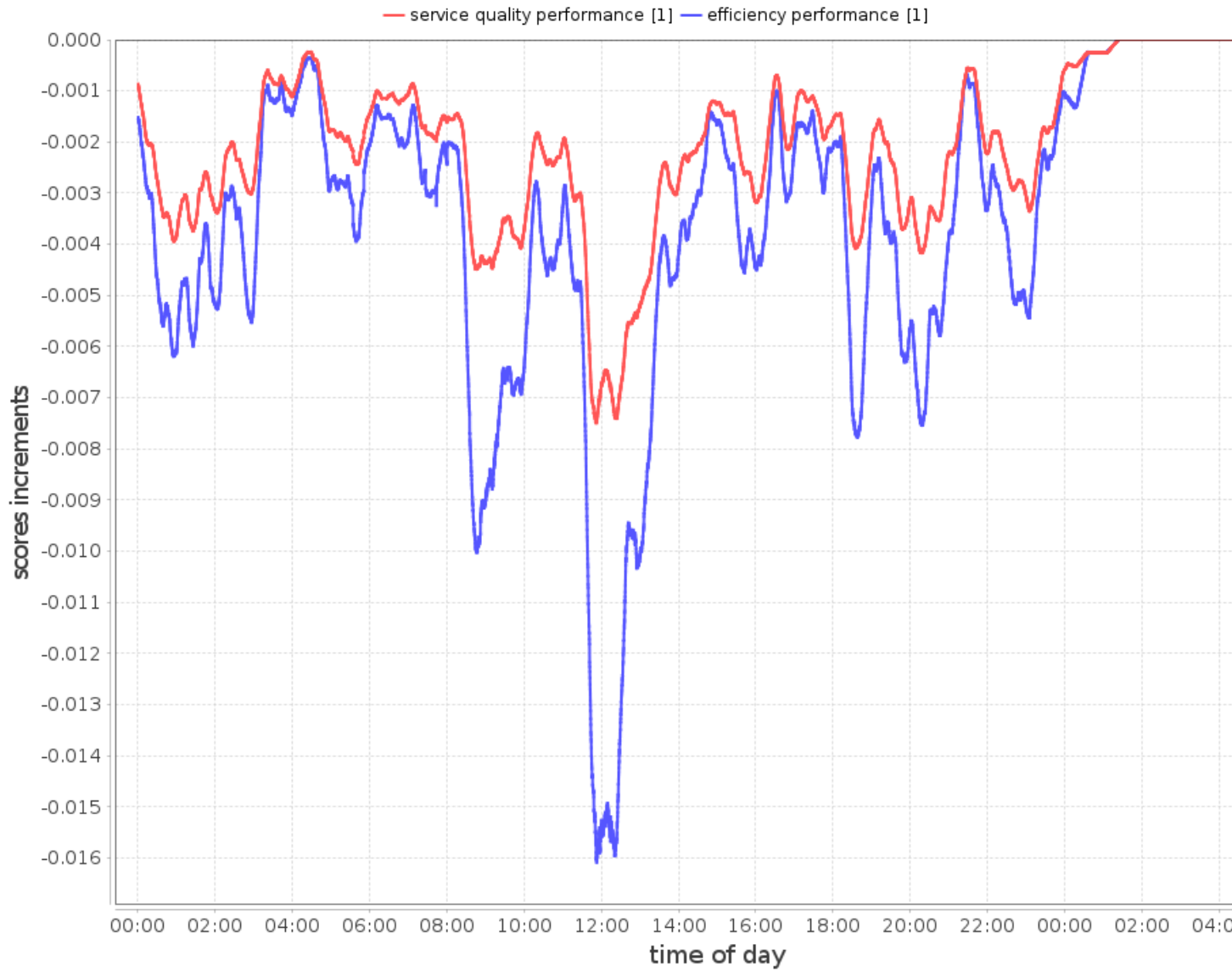
Status Distribution



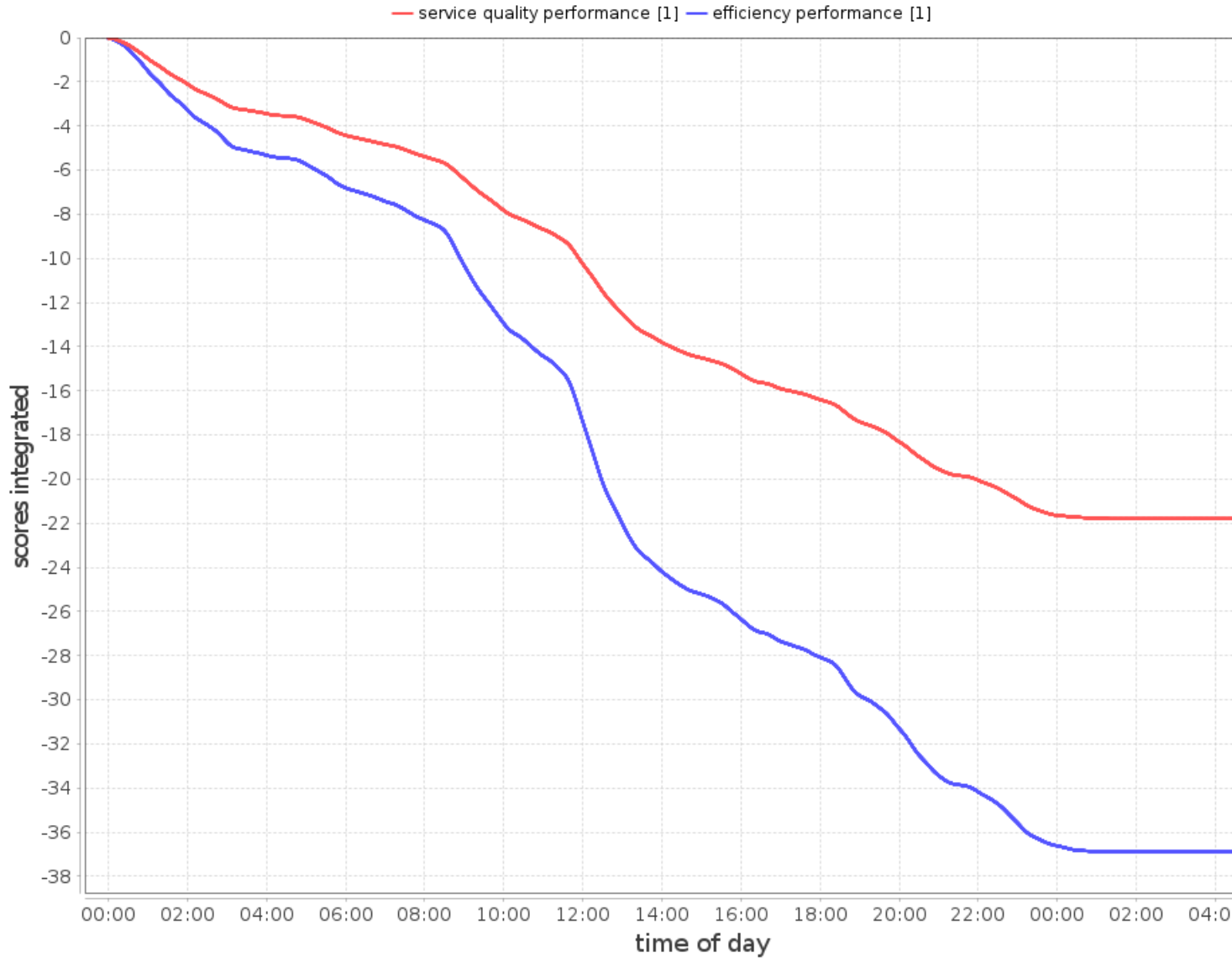
Aido Scores

Scores during Simulation

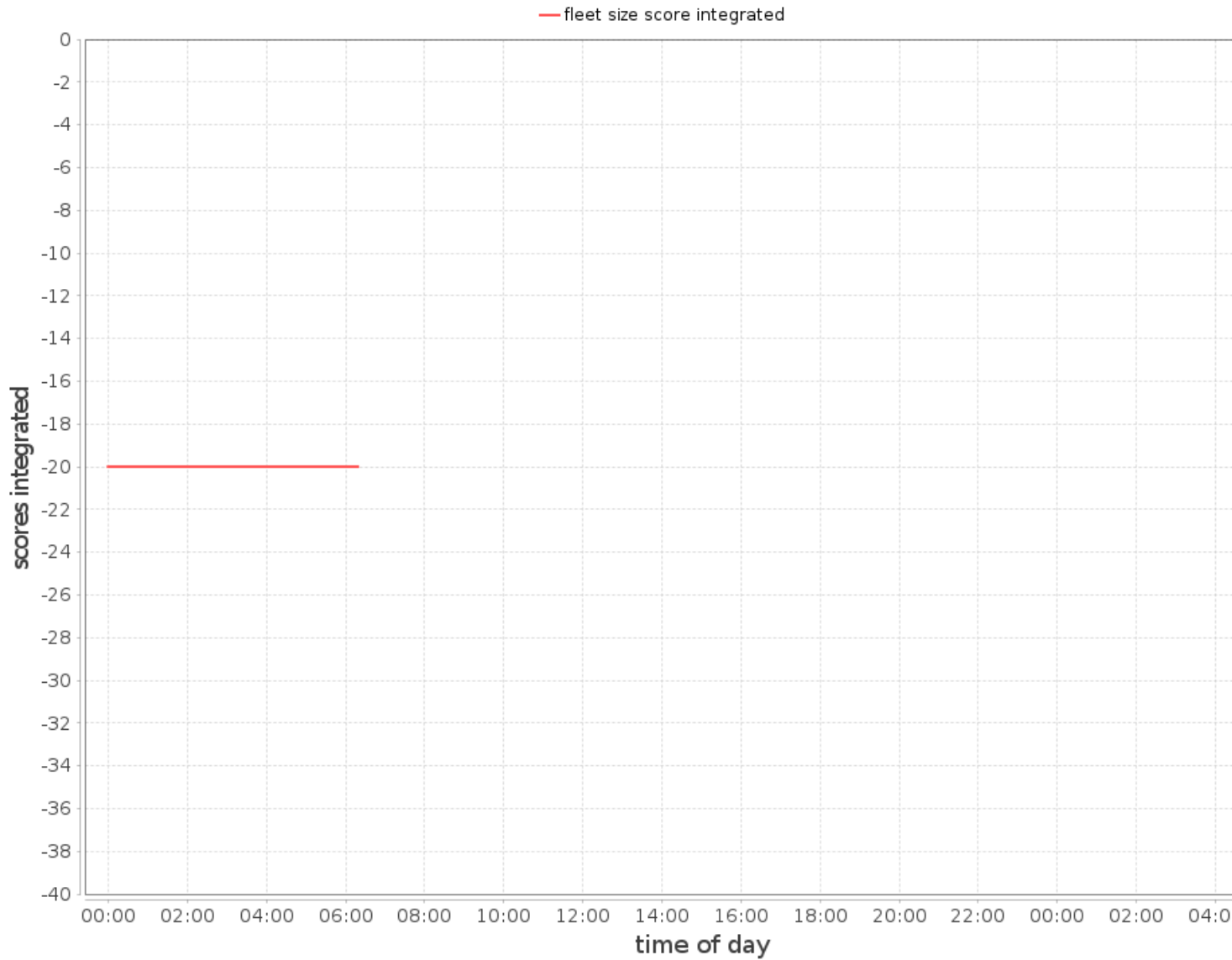
Service Quality and Efficiency Score Increments



Service Quality and Efficiency Score Integrated



Fleet Size Score Integrated



Final Scores

final service quality score: -21.801952916492457
final efficiency score: -36.896571665968345
final fleet size score: -Infinity

www.idsc.ethz.ch