



# AMoDeus Simulation Report

## Simulation Information

User: root  
Timestamp: 2018/12/01 - 12:15:41  
  
Iterations: 1 ,i.e., 0 in matsim config.

[AV File](#)   [AV\\_Config File](#)

Dispatcher: AidoDispatcherHost  
Rebalancing Period: -00:00:01  
Redispatching Period: 00:00:10  
  
Network: null\_prepared  
Virtual Nodes: no virtual network found  
Population: 500  
  
Number of Vehicles: 20  
Number of Requests: 500

# Aggregated Results

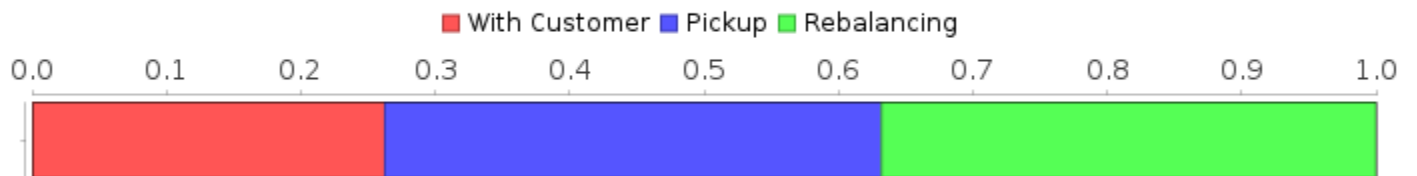
Distance Ratio: 26.26%  
Occupancy Ratio: 17.86 %

## Distances

Total: 31190.68 km  
Rebalancing: 11472.09 km (36.78%)  
Pickup: 11527.94 km (36.96%)  
With Customer: 8190.65 km (26.26%)

Average Trip Distance: 16.38 km

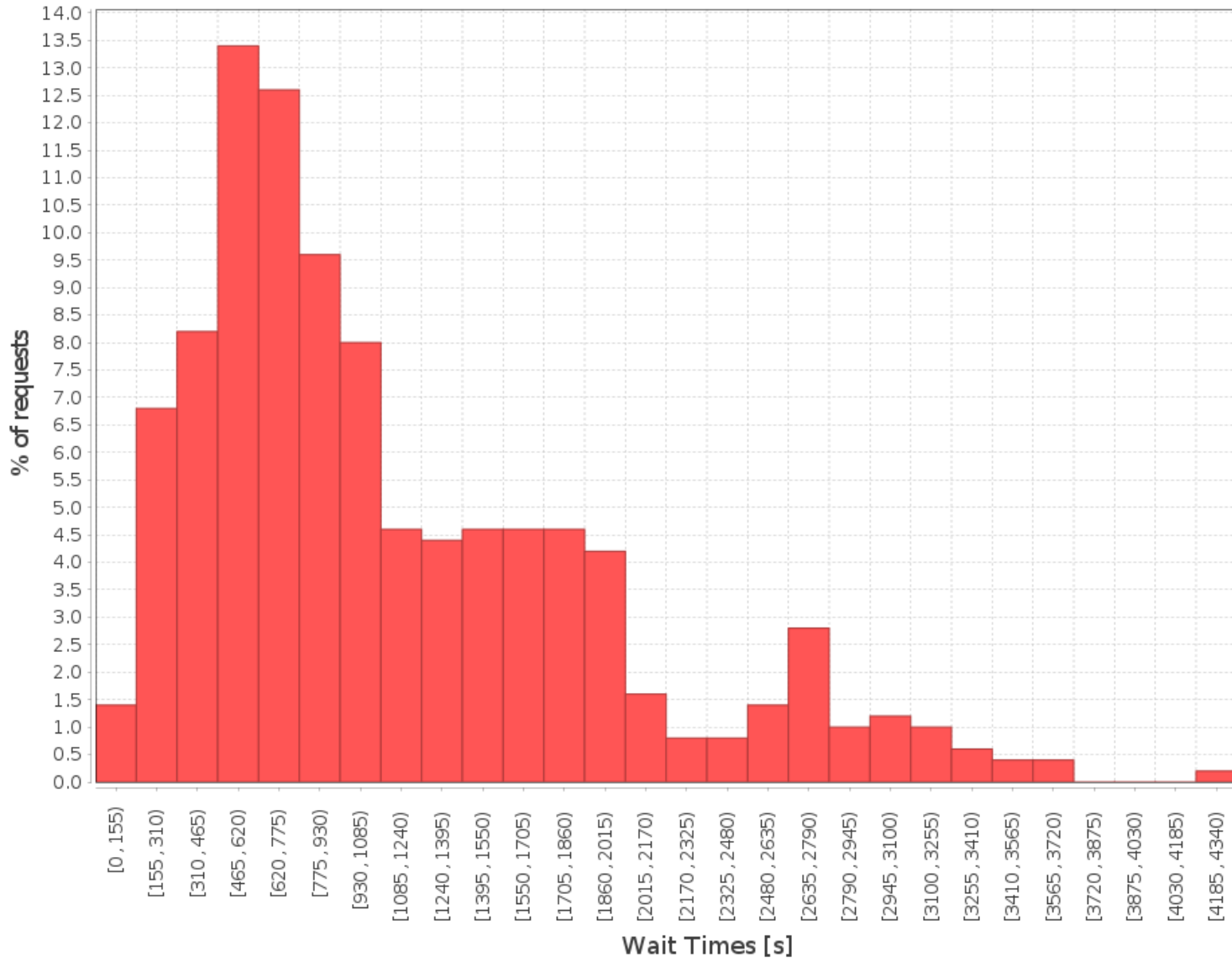
## Total Distance Distribution



## Wait Times

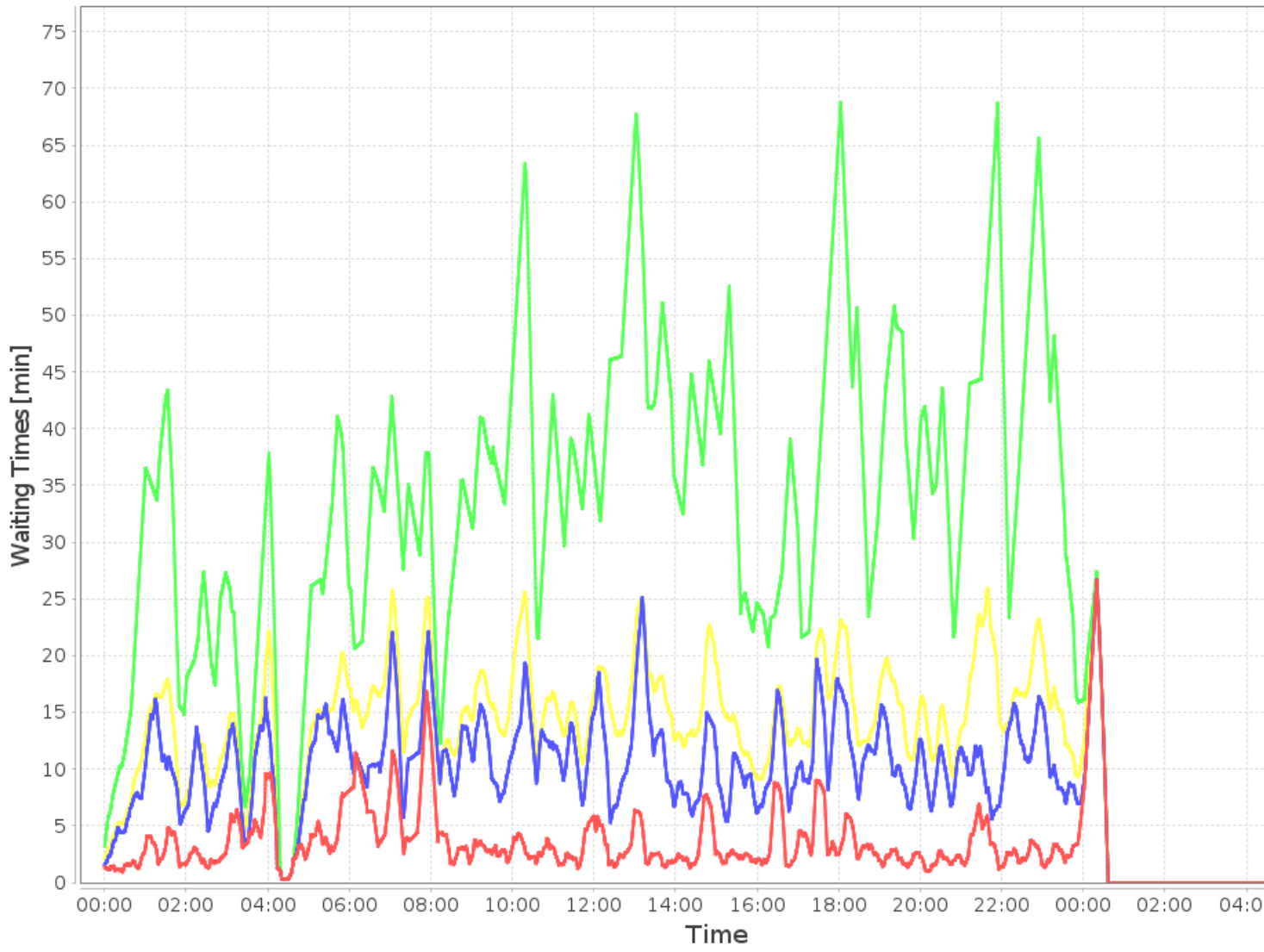
10.0% quantile 00:05:55  
50.0% quantile 00:14:44  
95.0% quantile 00:47:40  
Mean 00:19:24  
Maximum: 01:17:17

# Number of Requests per Wait Time

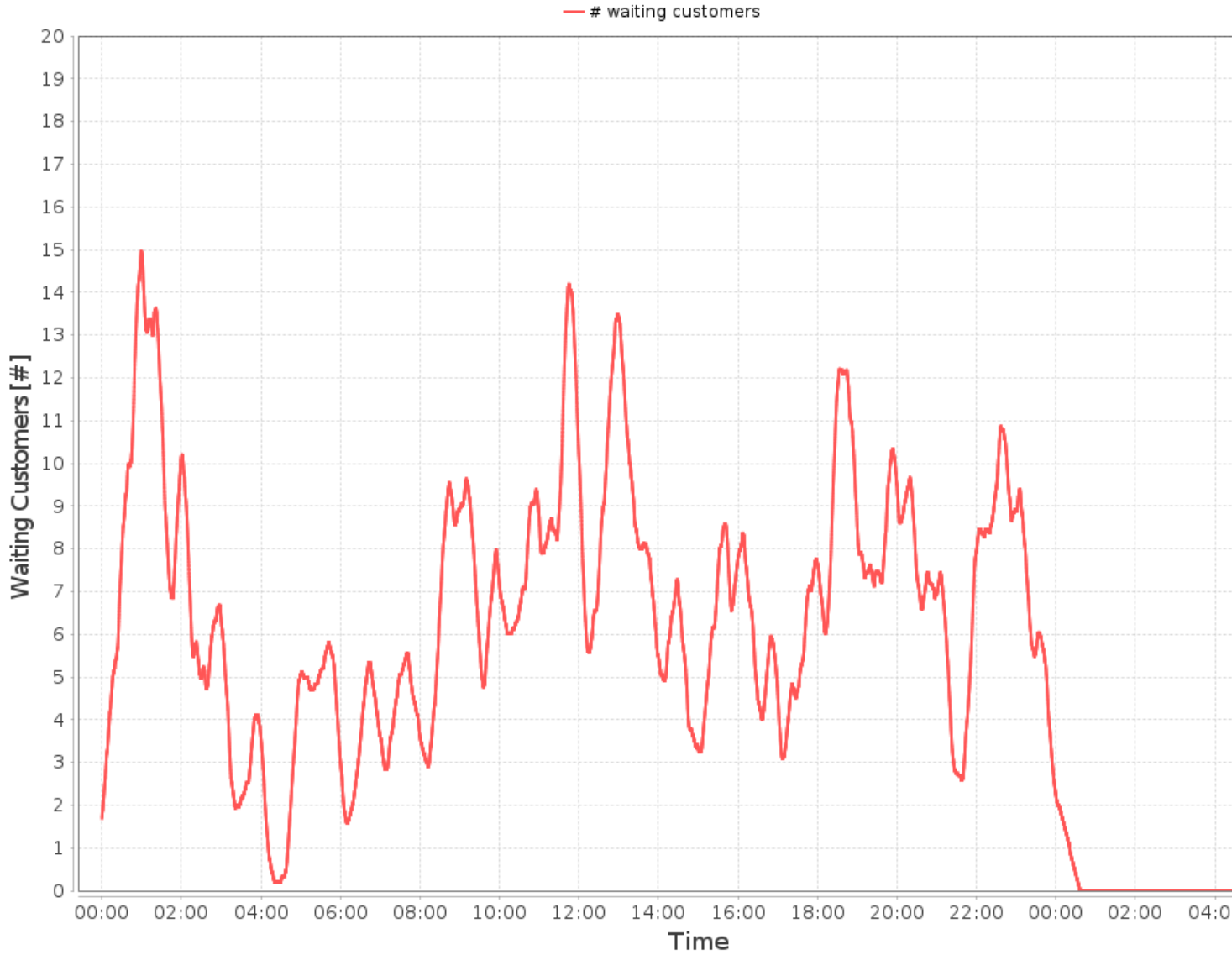


# Binned Waiting Times

— 10.0% quantile — 50.0% quantile — 95.0% quantile — Mean



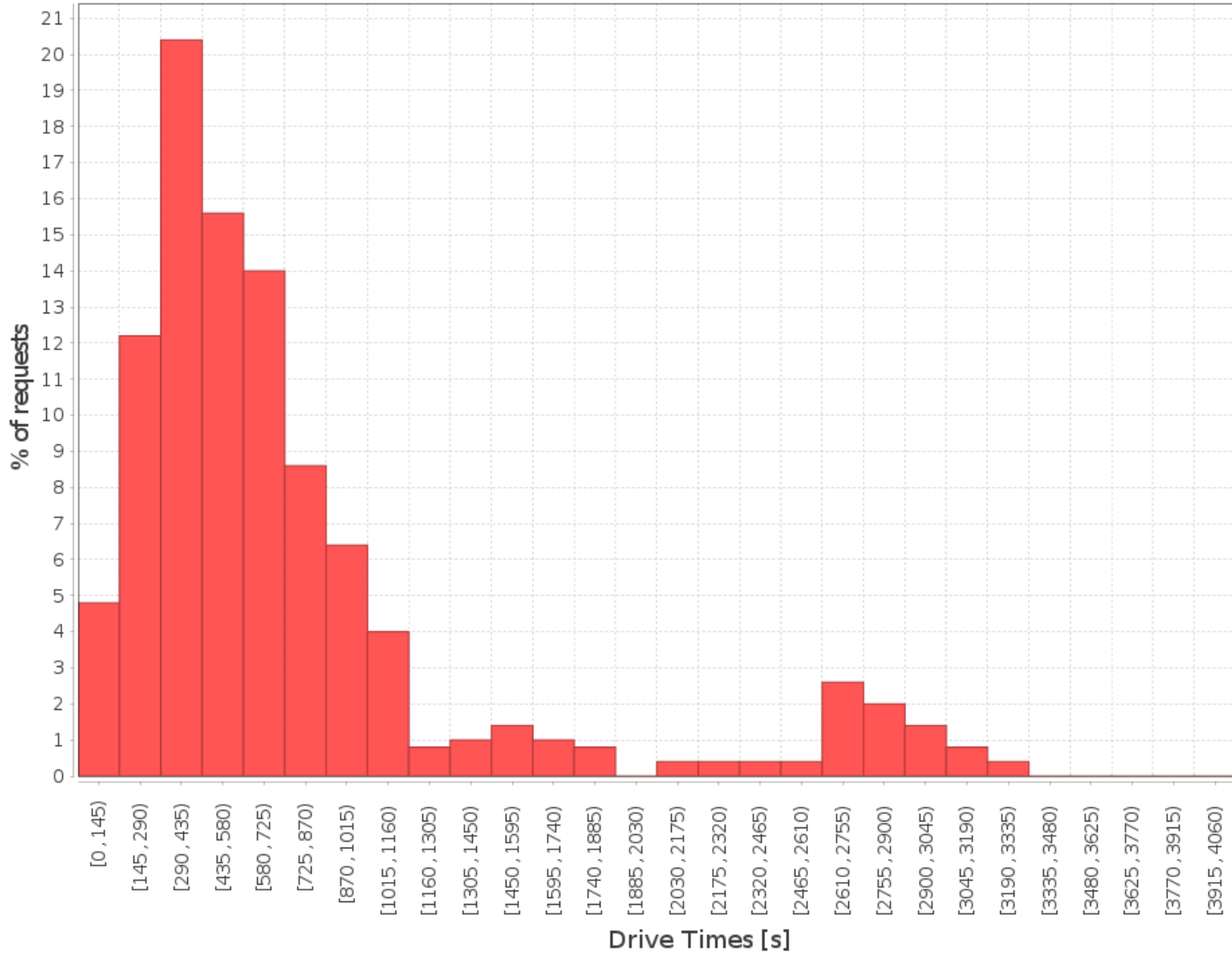
# Waiting Customers per Day Time



## Drive Times

10.0% quantile	00:03:30
50.0% quantile	00:09:10
95.0% quantile	00:45:40
Mean	00:12:51
Maximum:	01:12:20

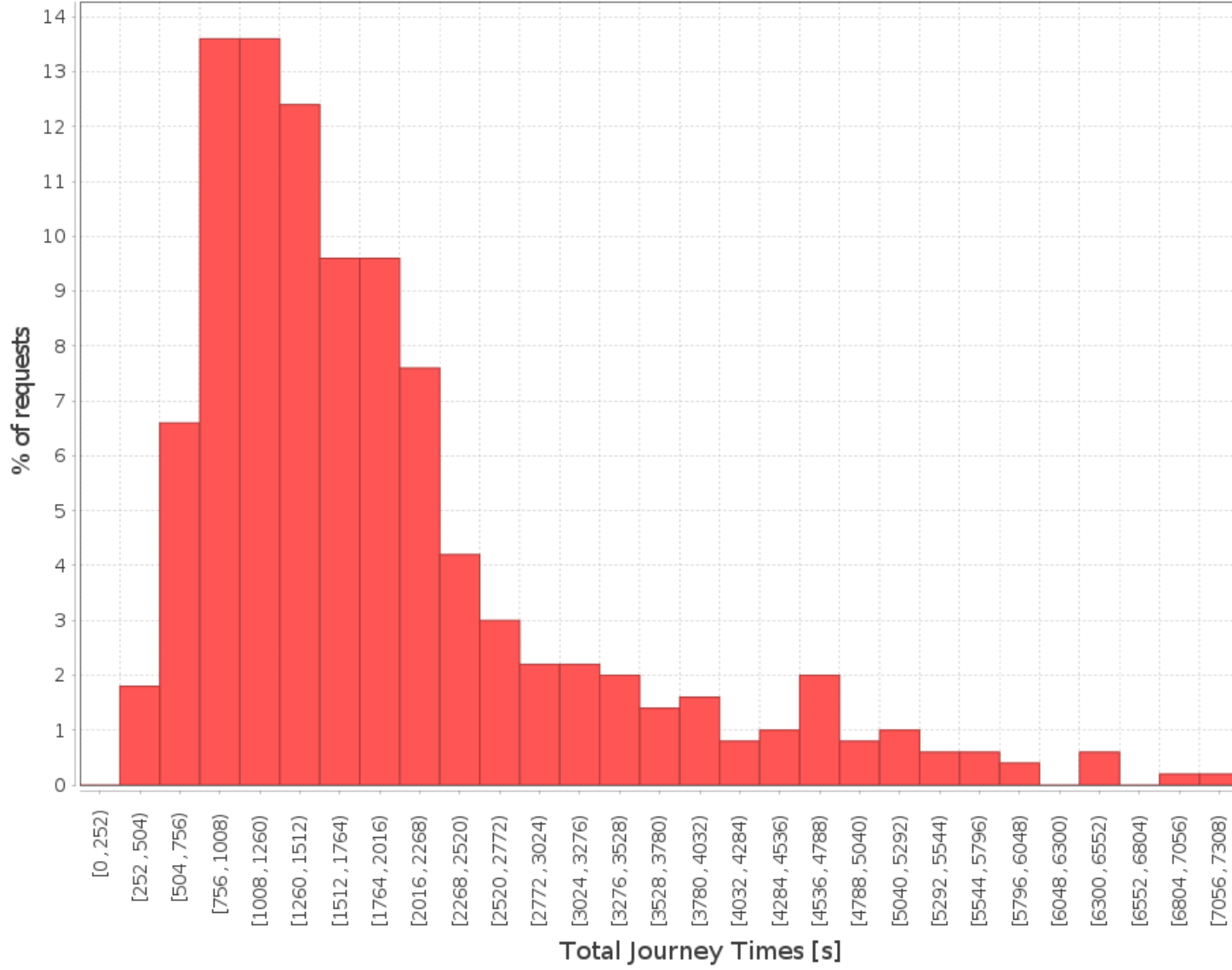
## Number of Requests per Drive Time



### Total Journey Times

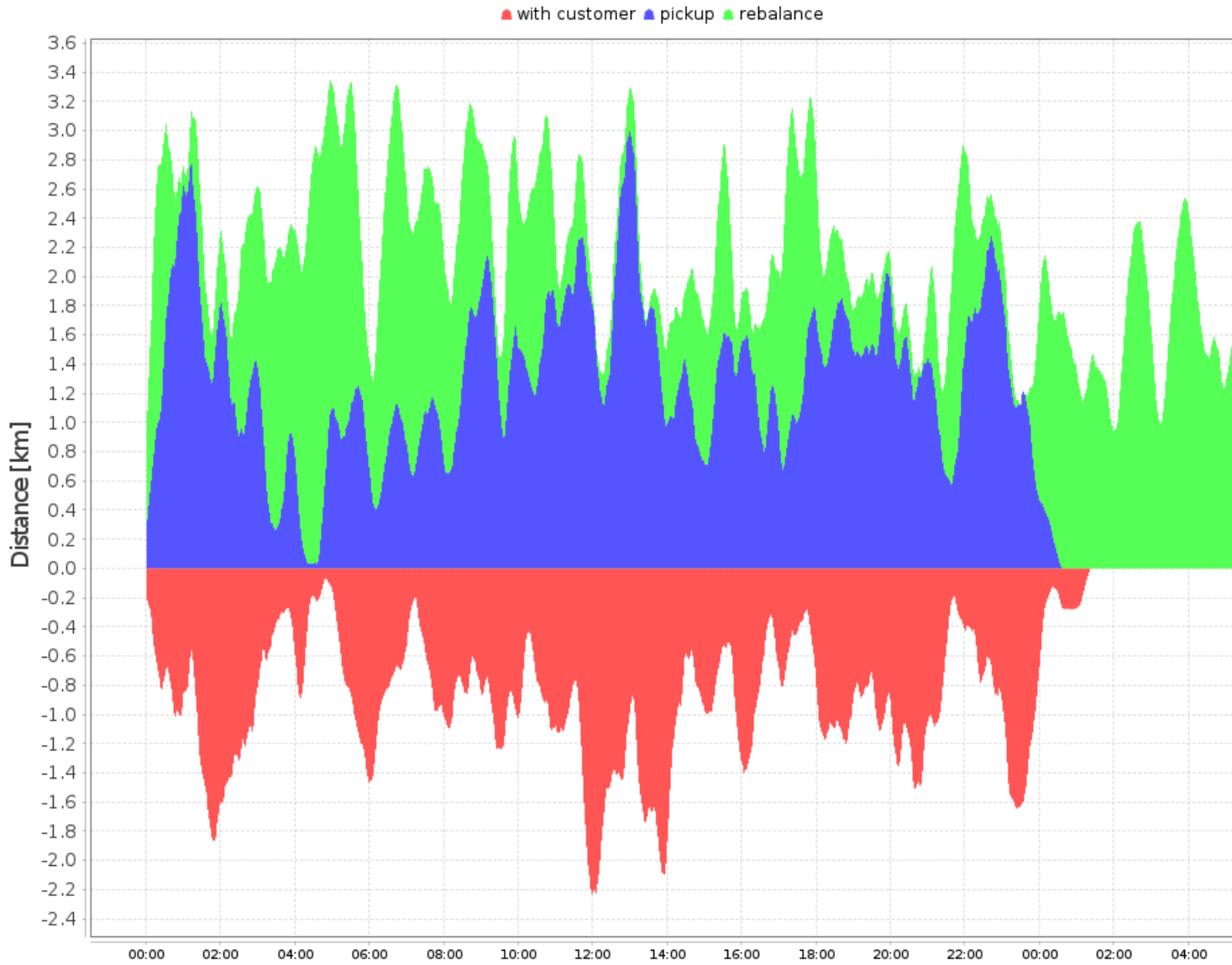
10.0% quantile	00:13:03
50.0% quantile	00:26:00
95.0% quantile	01:18:38
Mean	00:32:15
Maximum:	02:06:03

# Number of Requests per Total Journey Time



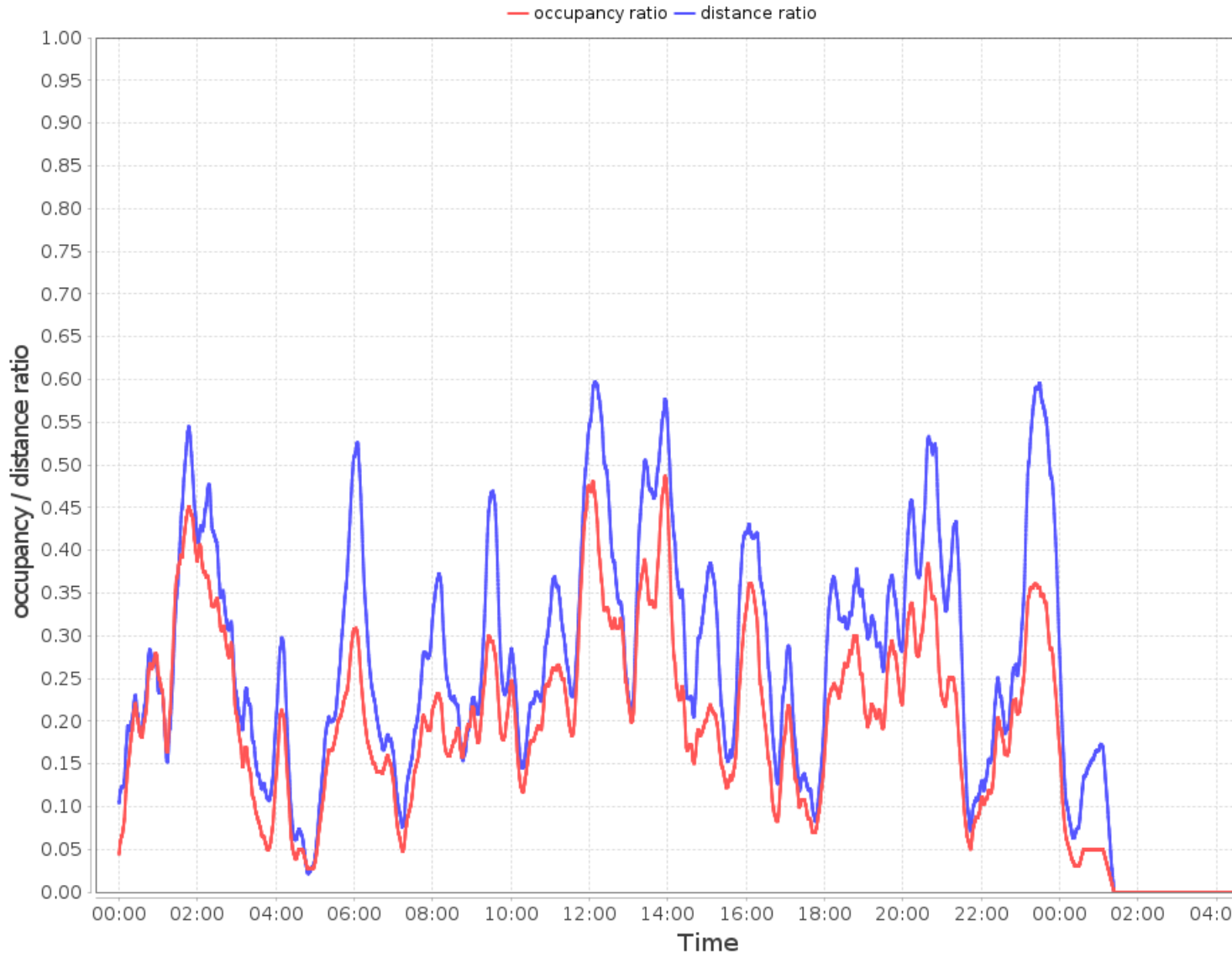
# Fleet Efficiency

## Distance Distribution over Day

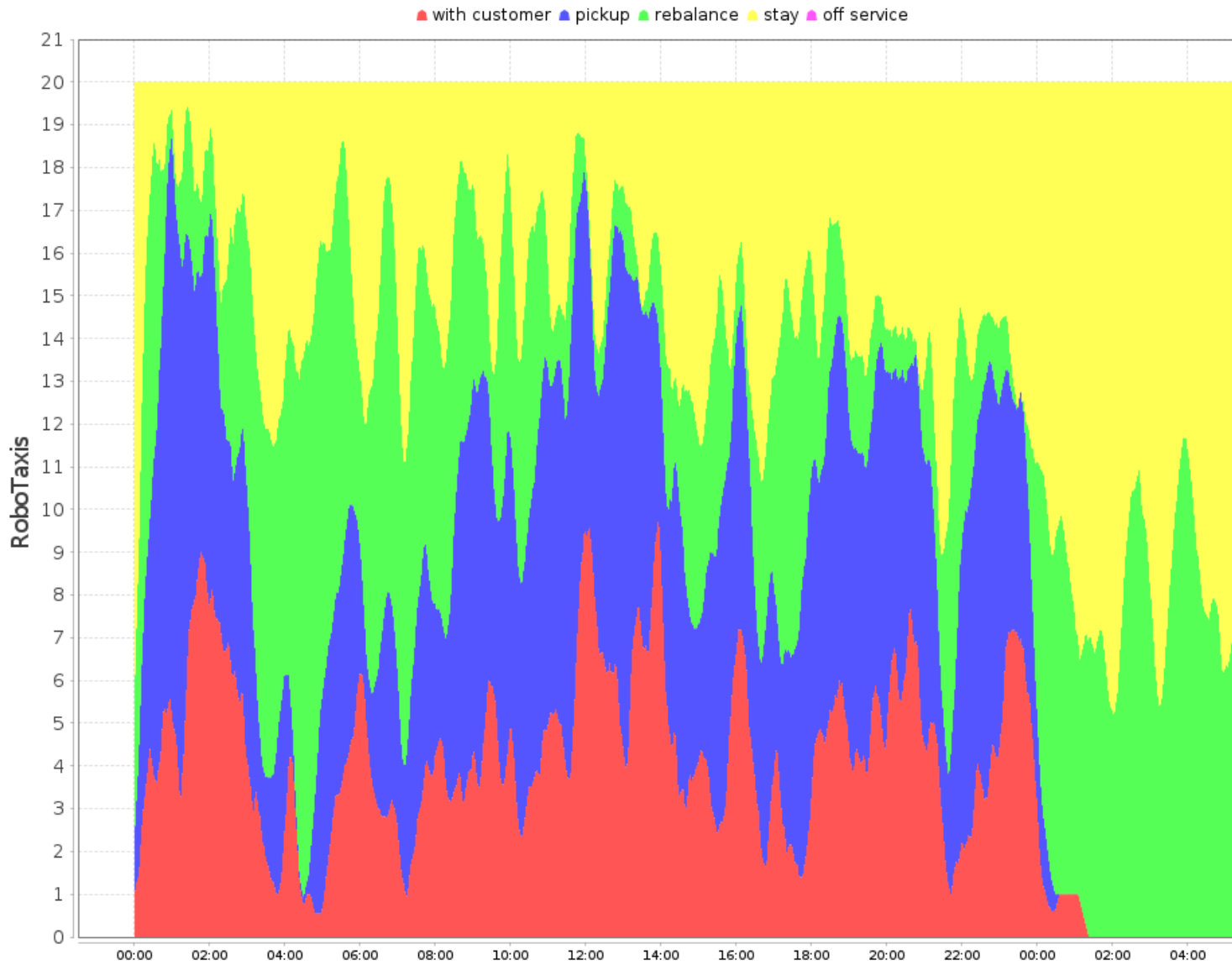




# Occupancy and Distance Ratios



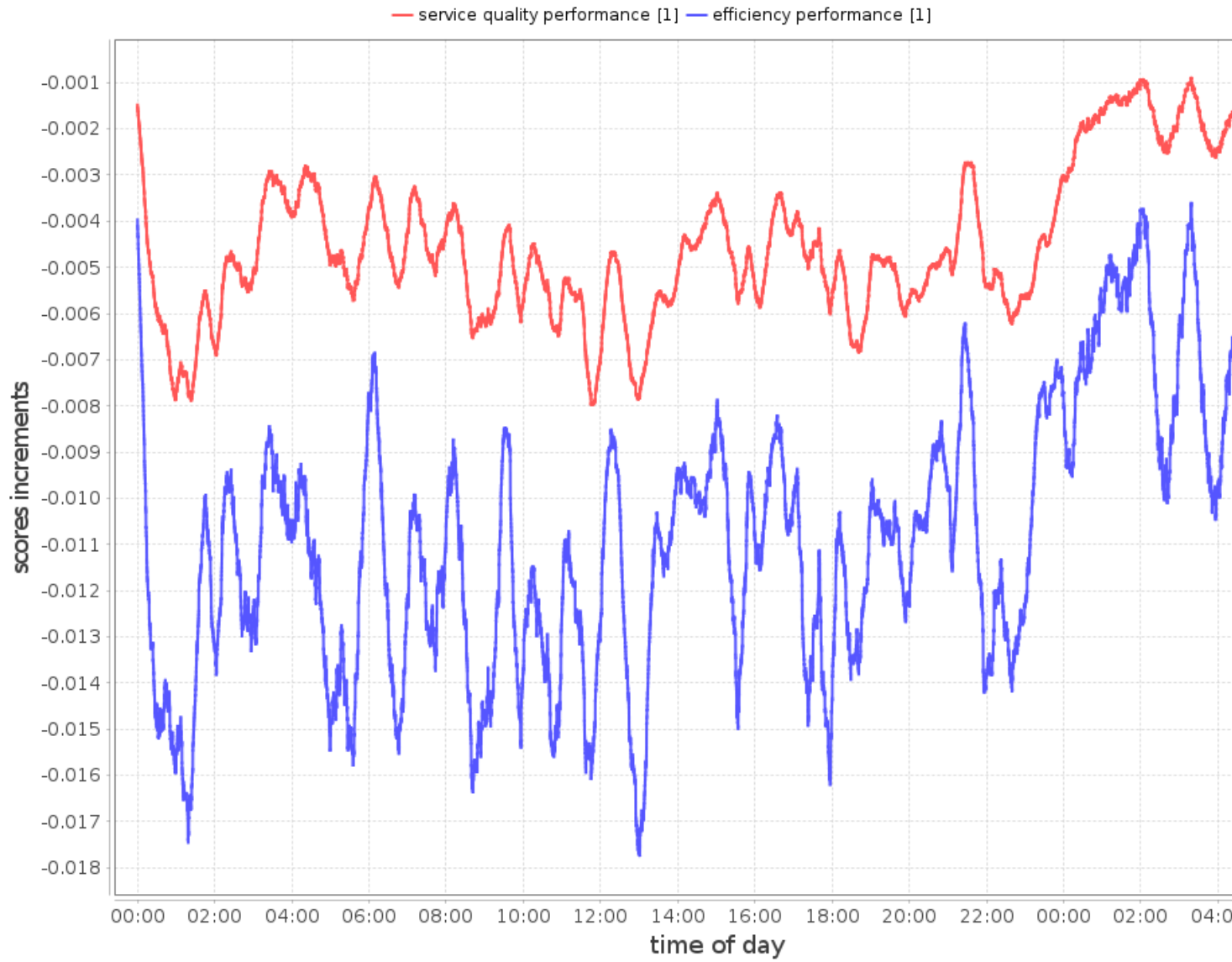
## Status Distribution



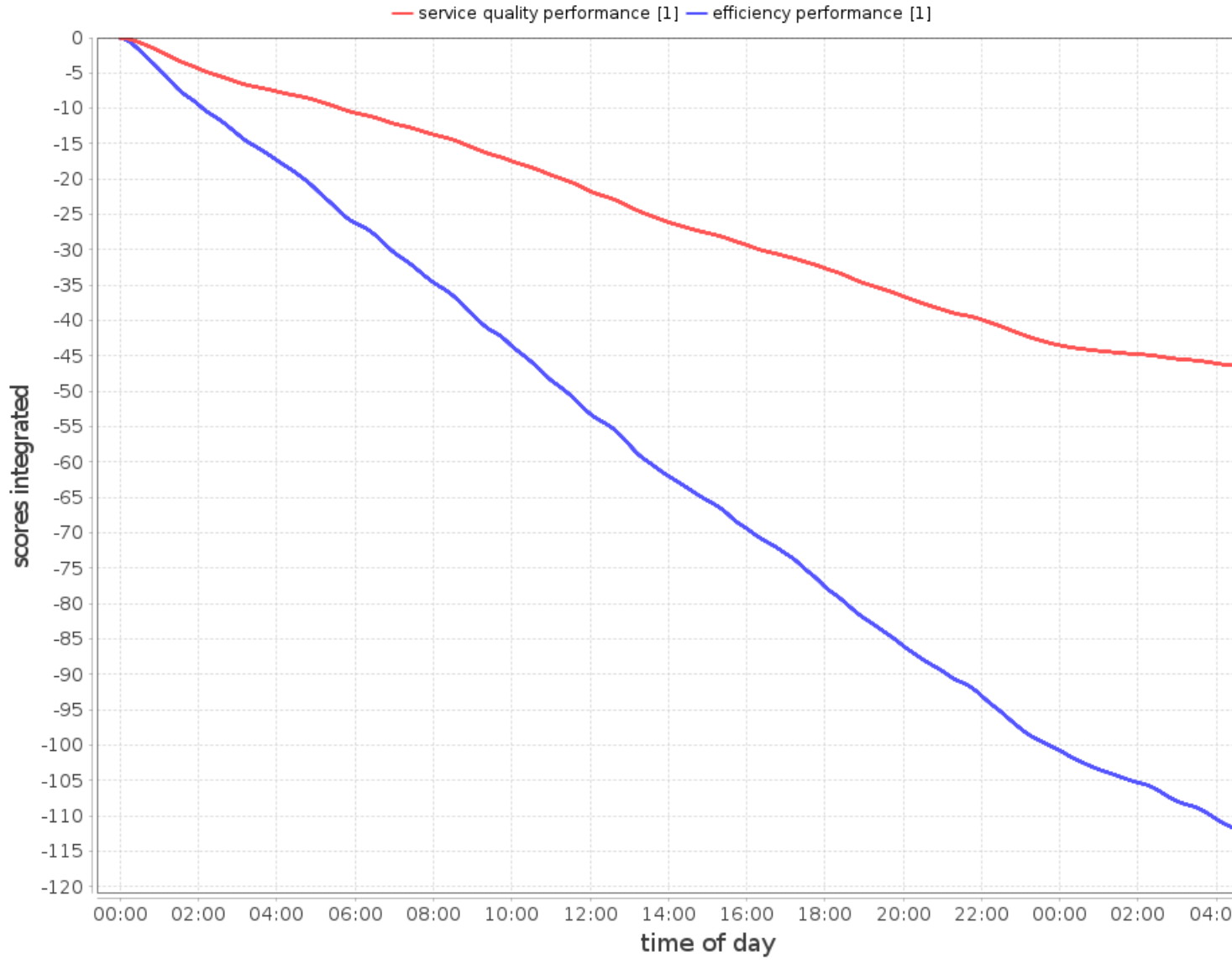
## Aido Scores

### Scores during Simulation

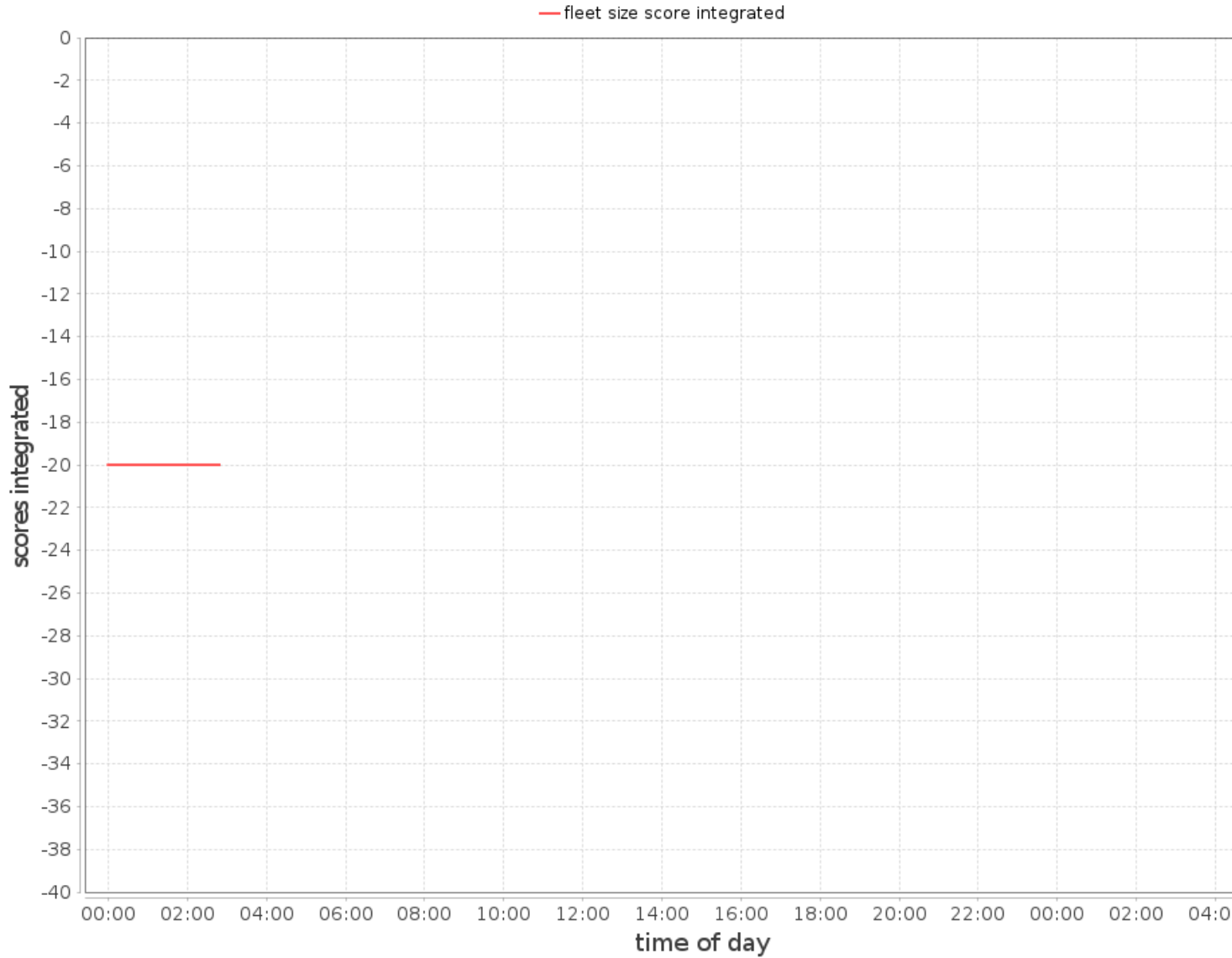
# Service Quality and Efficiency Score Increments



# Service Quality and Efficiency Score Integrated



# Fleet Size Score Integrated



## Final Scores

final service quality score: -47.24772419950919  
final efficiency score: -115.25721679803671  
final fleet size score: -Infinity

[www.idsc.ethz.ch](http://www.idsc.ethz.ch)