



# AMoDeus Simulation Report

## Simulation Information

User: root  
Timestamp: 2018/12/03 - 00:25:27  
  
Iterations: 1 ,i.e., 0 in matsim config.

[AV File](#)   [AV\\_Config File](#)

Dispatcher: AidoDispatcherHost  
Rebalancing Period: -00:00:01  
Redispatching Period: 00:00:10  
  
Network: null\_prepared  
Virtual Nodes: no virtual network found  
Population: 500  
  
Number of Vehicles: 50  
Number of Requests: 500

# Aggregated Results

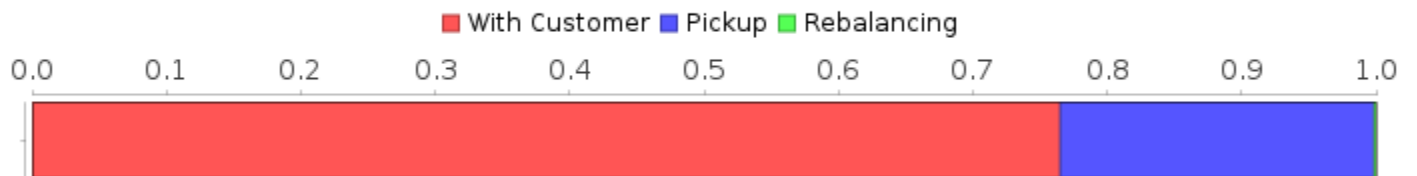
Distance Ratio: 76.52%  
Occupancy Ratio: 7.14 %

## Distances

Total: 10706.28 km  
Rebalancing: 11.78 km (0.11%)  
Pickup: 2501.97 km (23.37%)  
With Customer: 8192.53 km (76.52%)

Average Trip Distance: 16.39 km

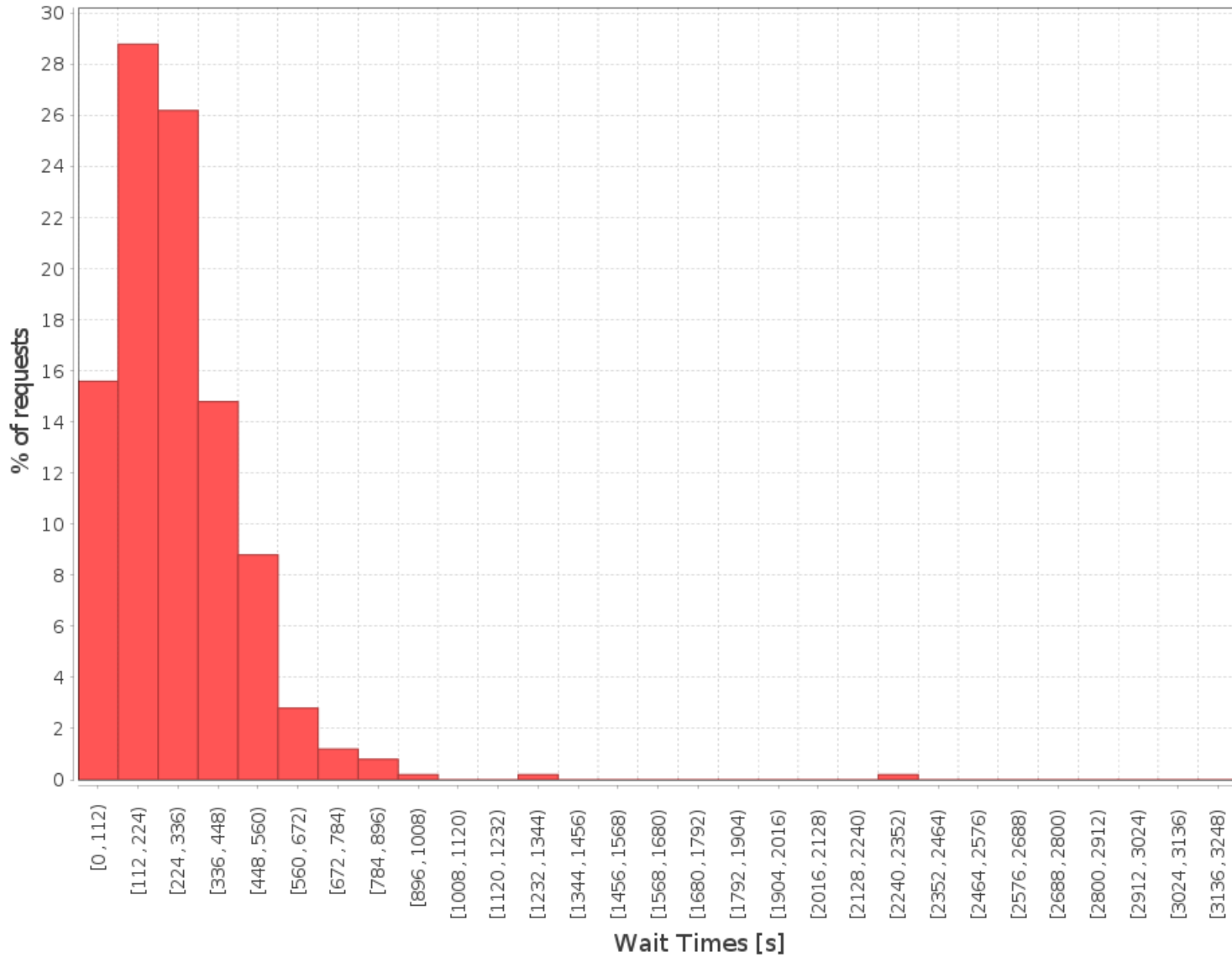
## Total Distance Distribution



## Wait Times

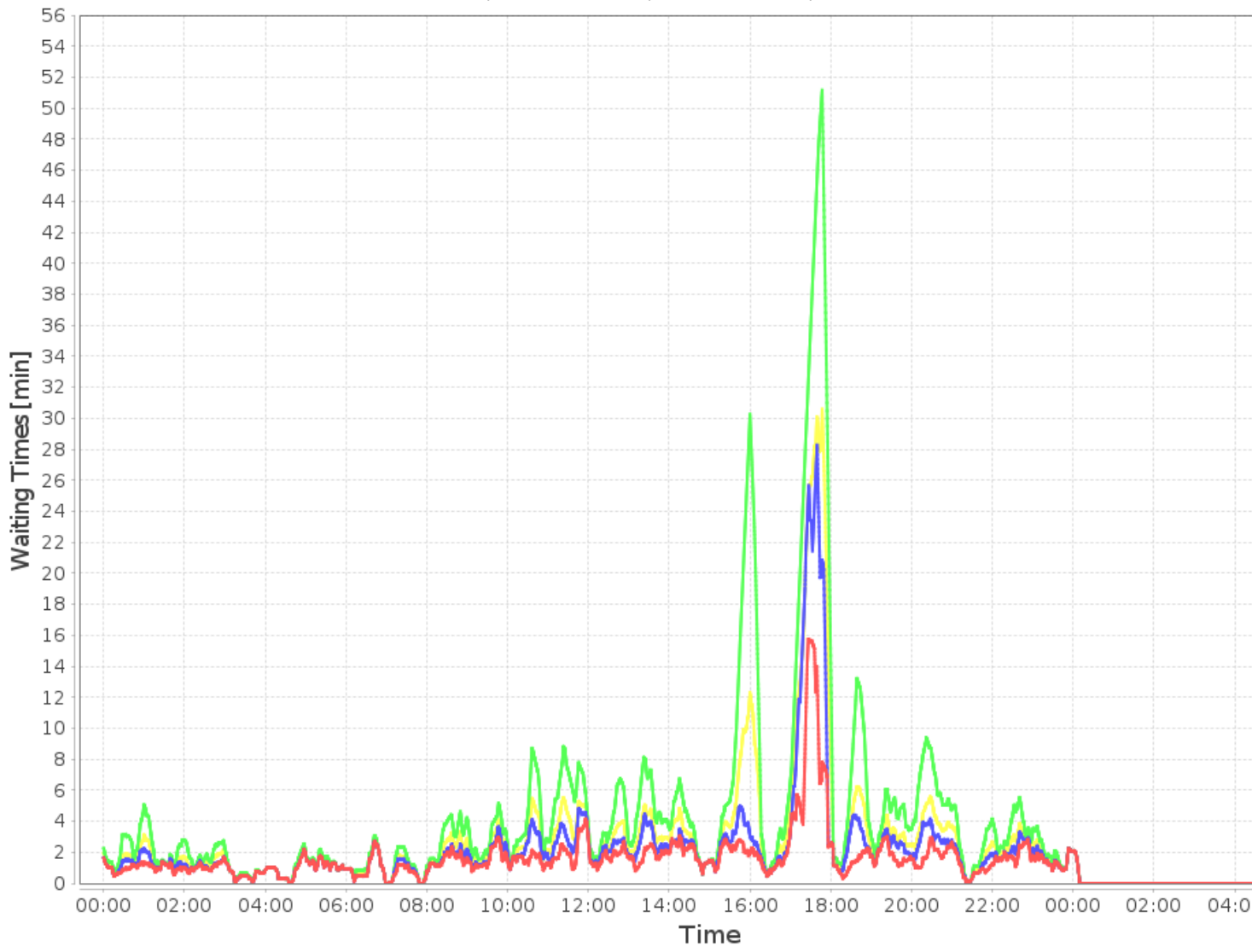
10.0% quantile: 00:01:18  
50.0% quantile: 00:04:04  
95.0% quantile: 00:09:32  
Mean: 00:04:43  
Maximum: 00:56:00

# Number of Requests per Wait Time

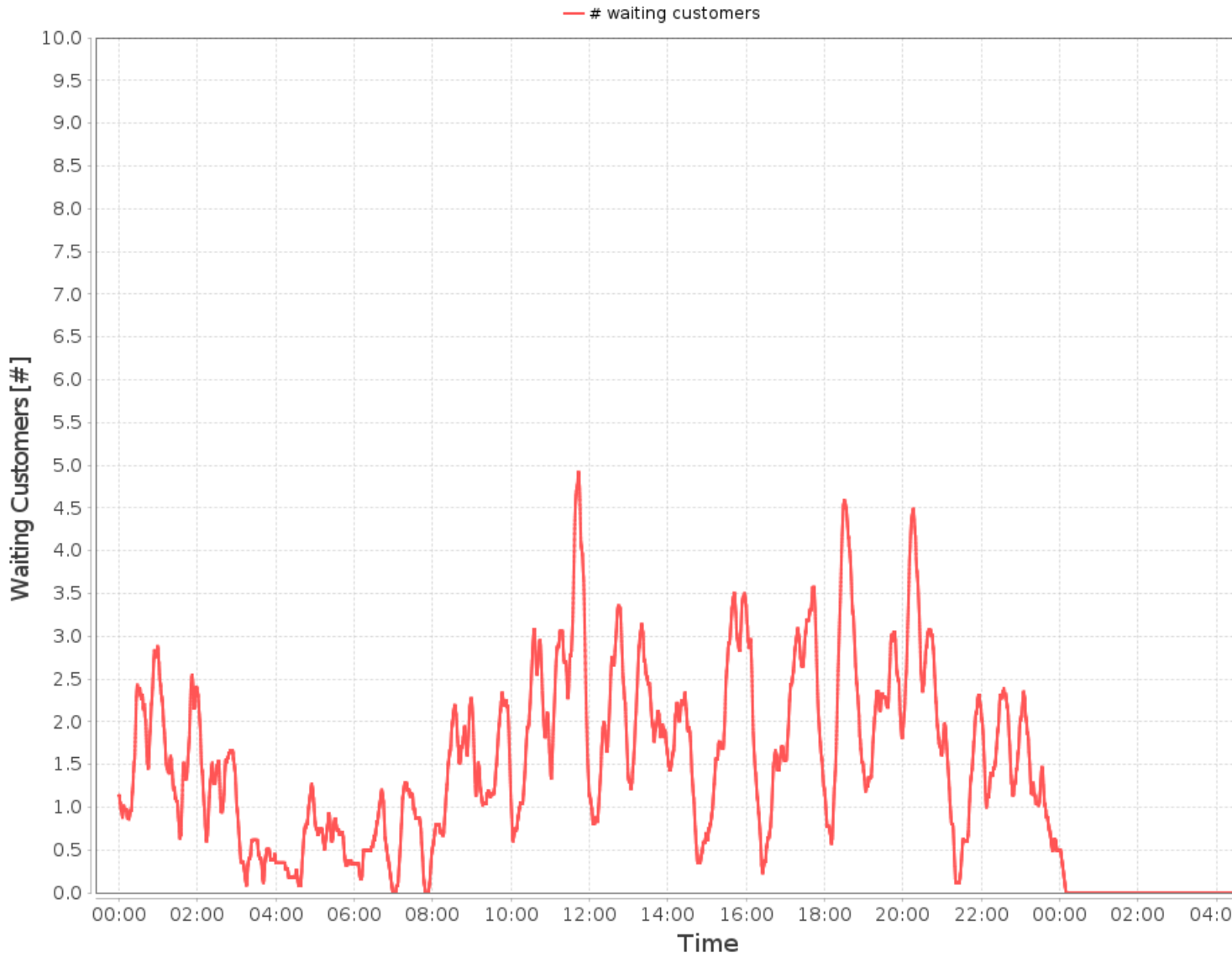


# Binned Waiting Times

— 10.0% quantile — 50.0% quantile — 95.0% quantile — Mean



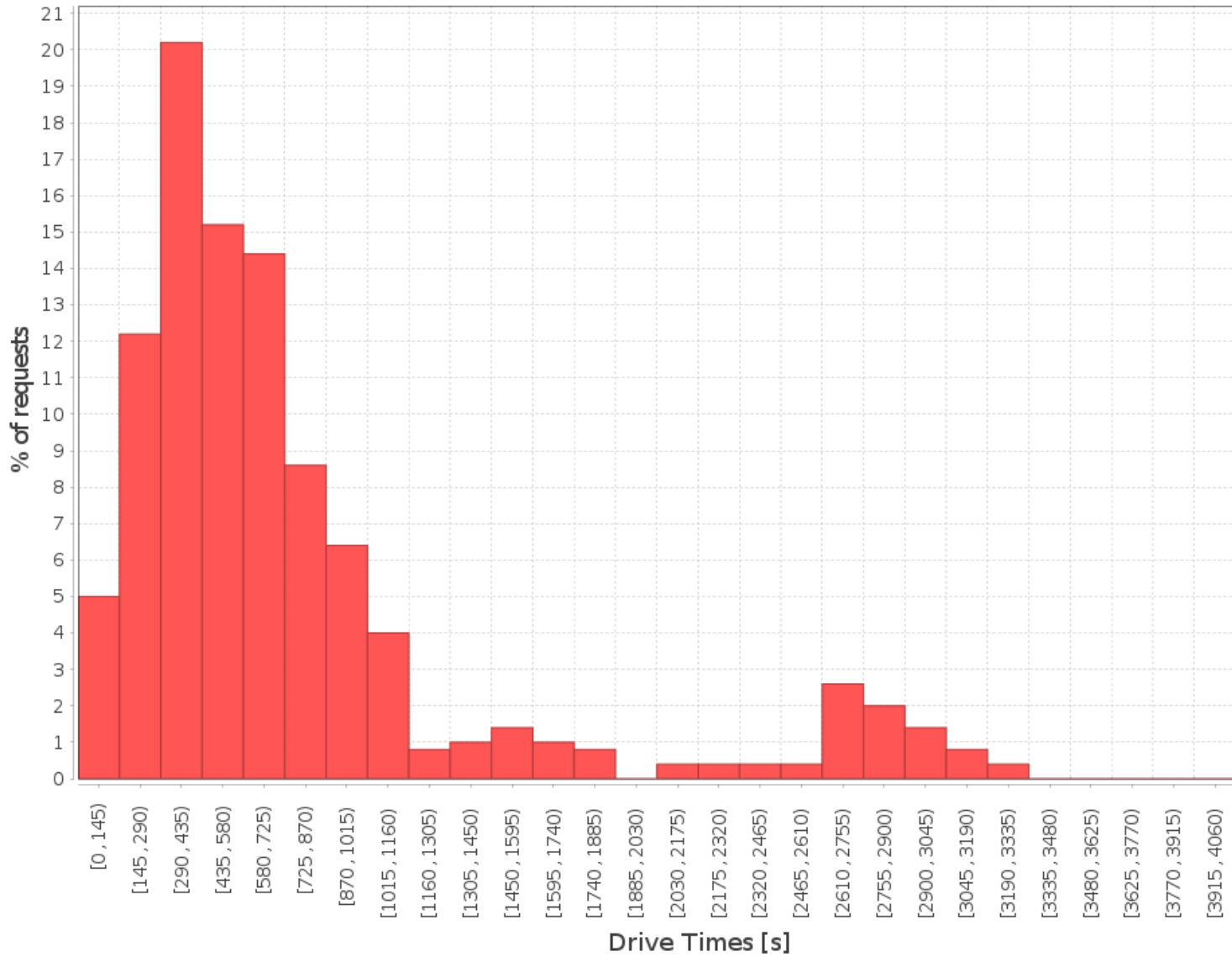
# Waiting Customers per Day Time



## Drive Times

10.0% quantile	00:03:30
50.0% quantile	00:09:10
95.0% quantile	00:45:30
Mean	00:12:50
Maximum:	01:12:20

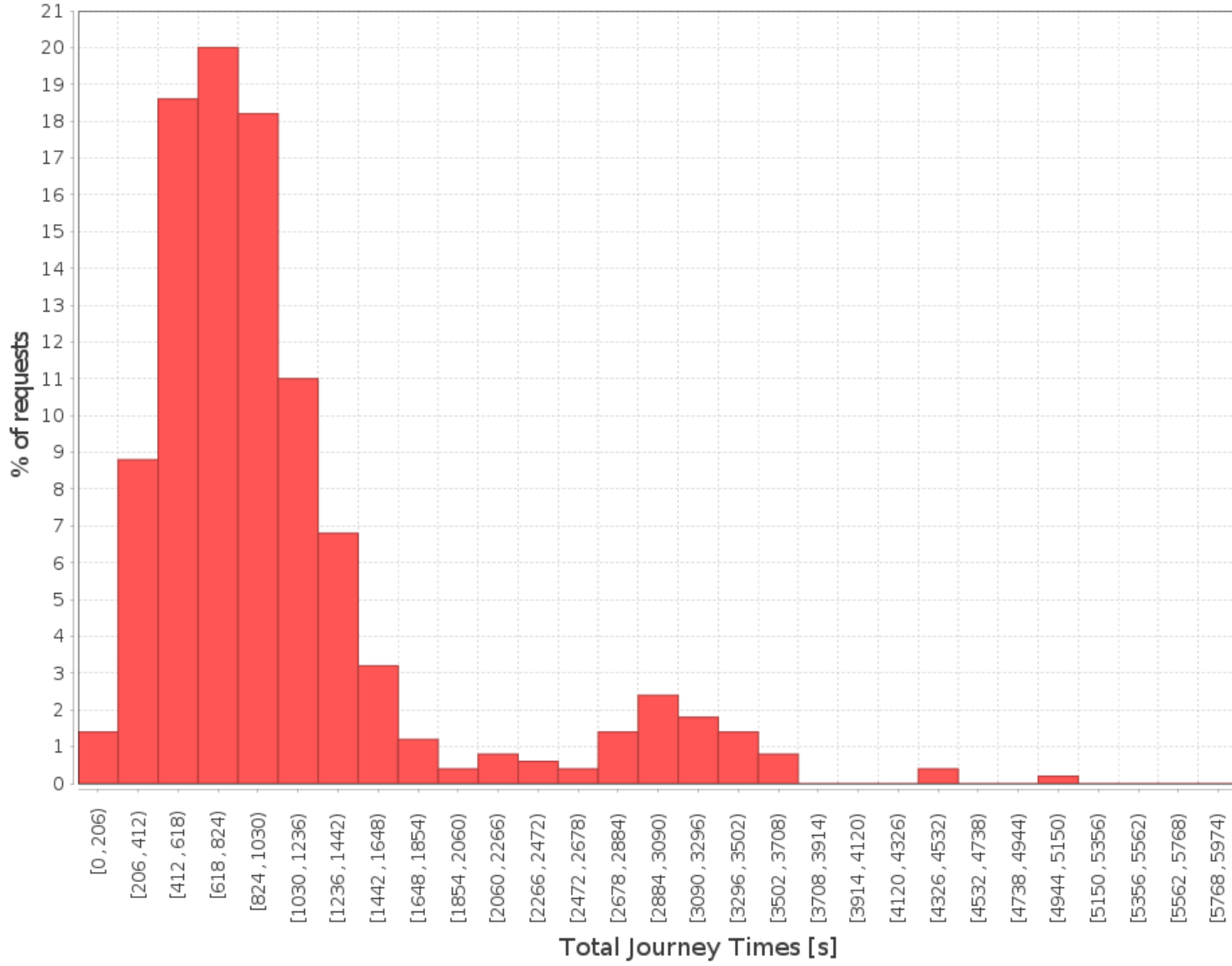
## Number of Requests per Drive Time



### Total Journey Times

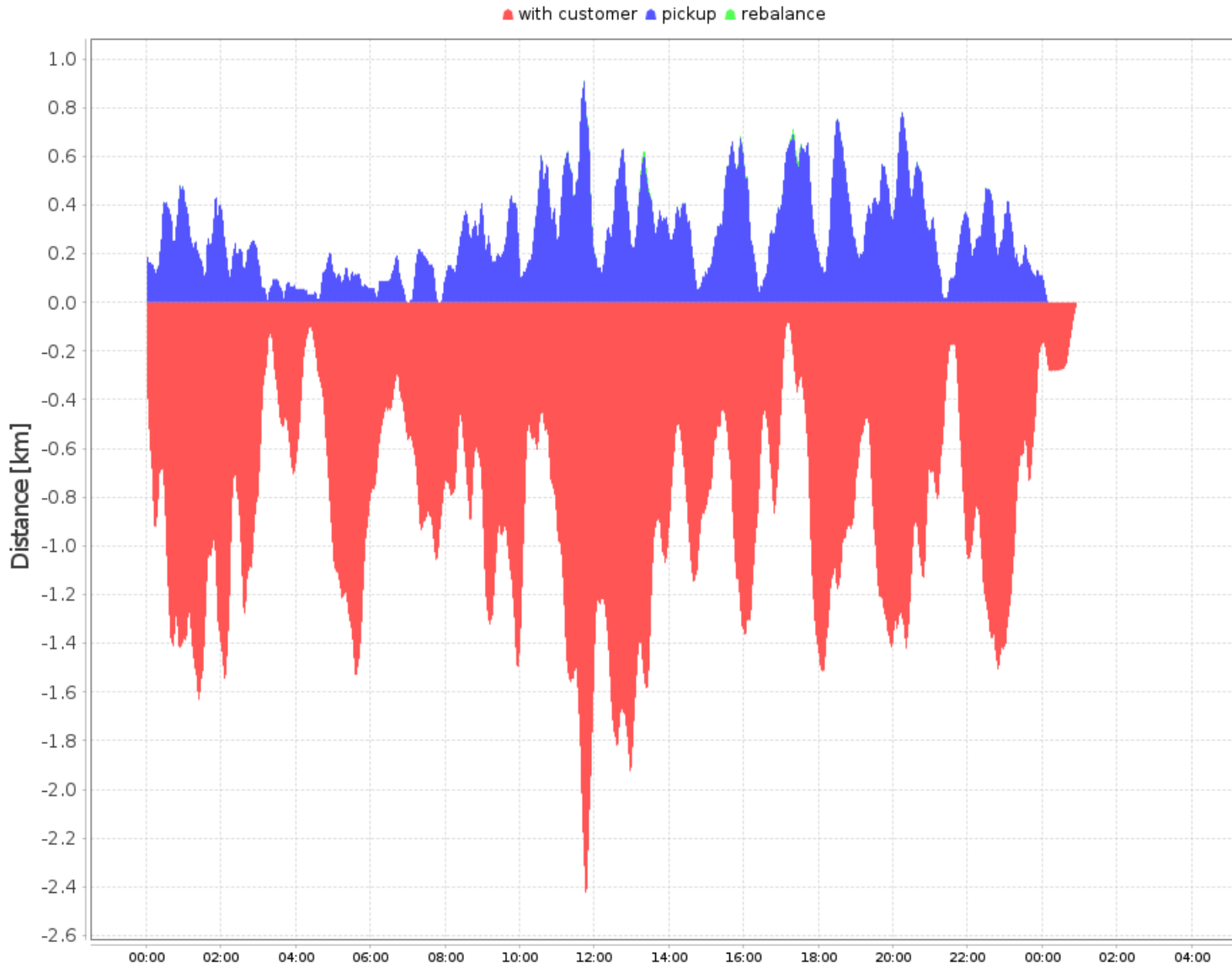
10.0% quantile	00:06:43
50.0% quantile	00:13:49
95.0% quantile	00:50:53
Mean	00:17:34
Maximum:	01:43:00

# Number of Requests per Total Journey Time



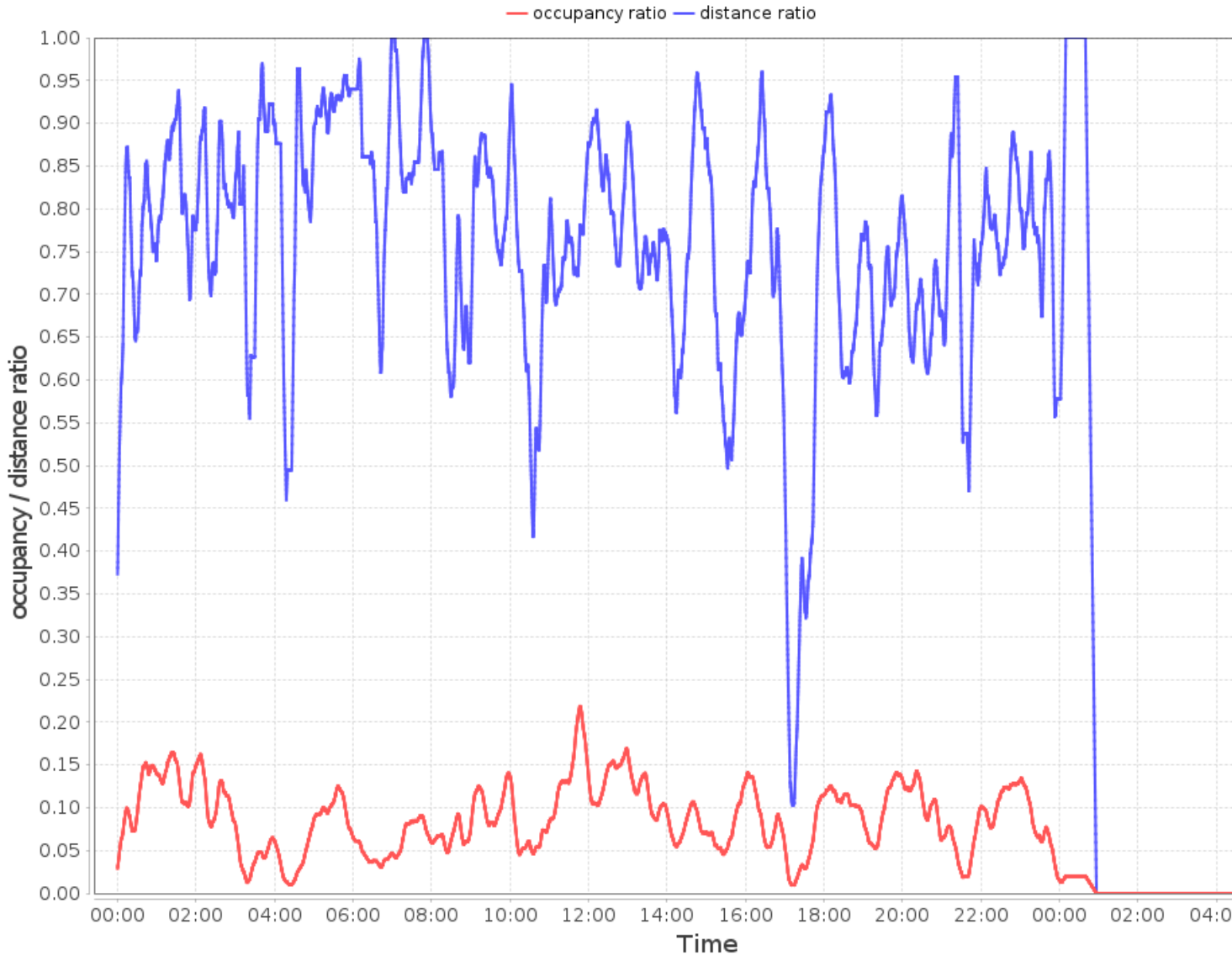
# Fleet Efficiency

## Distance Distribution over Day

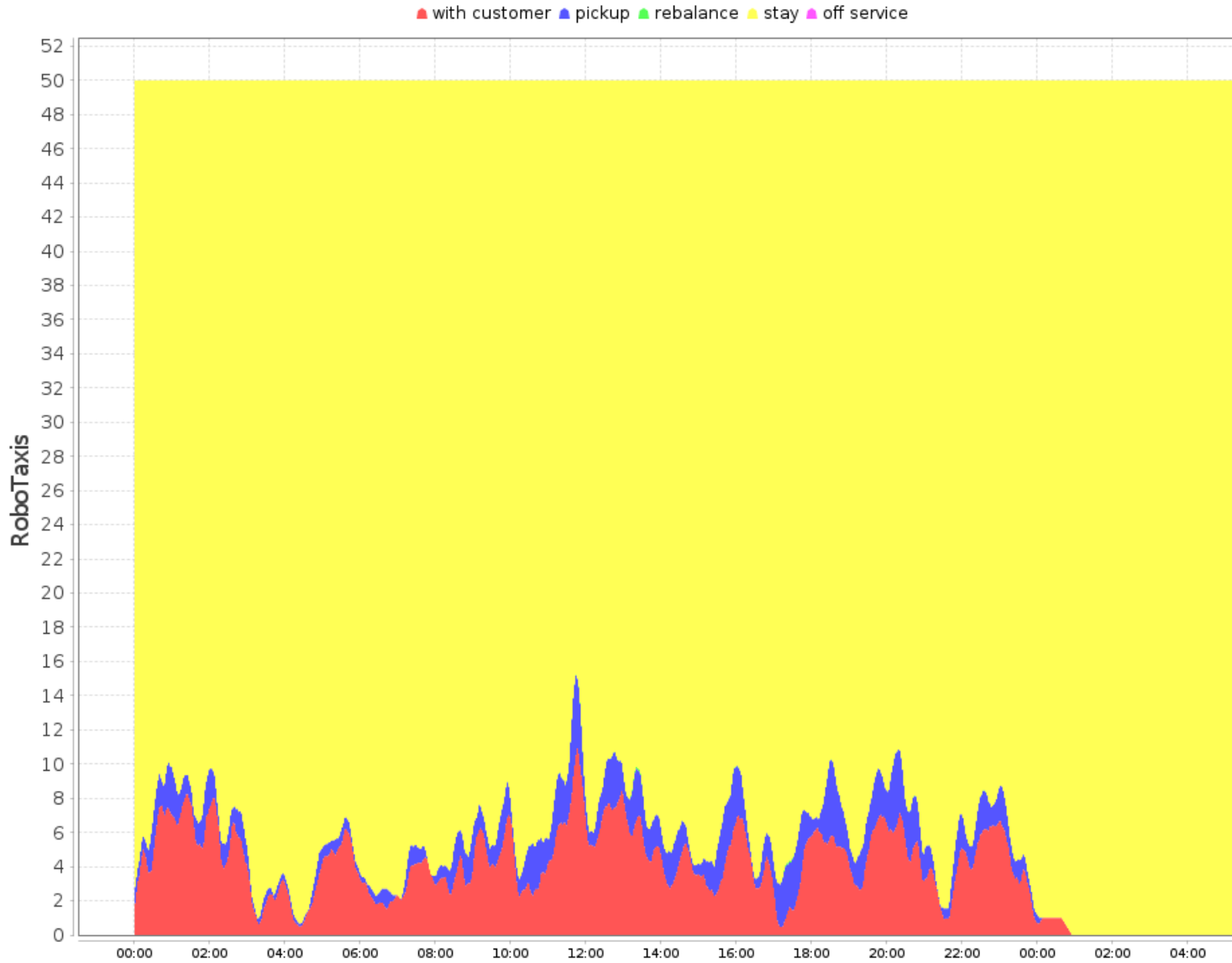




# Occupancy and Distance Ratios



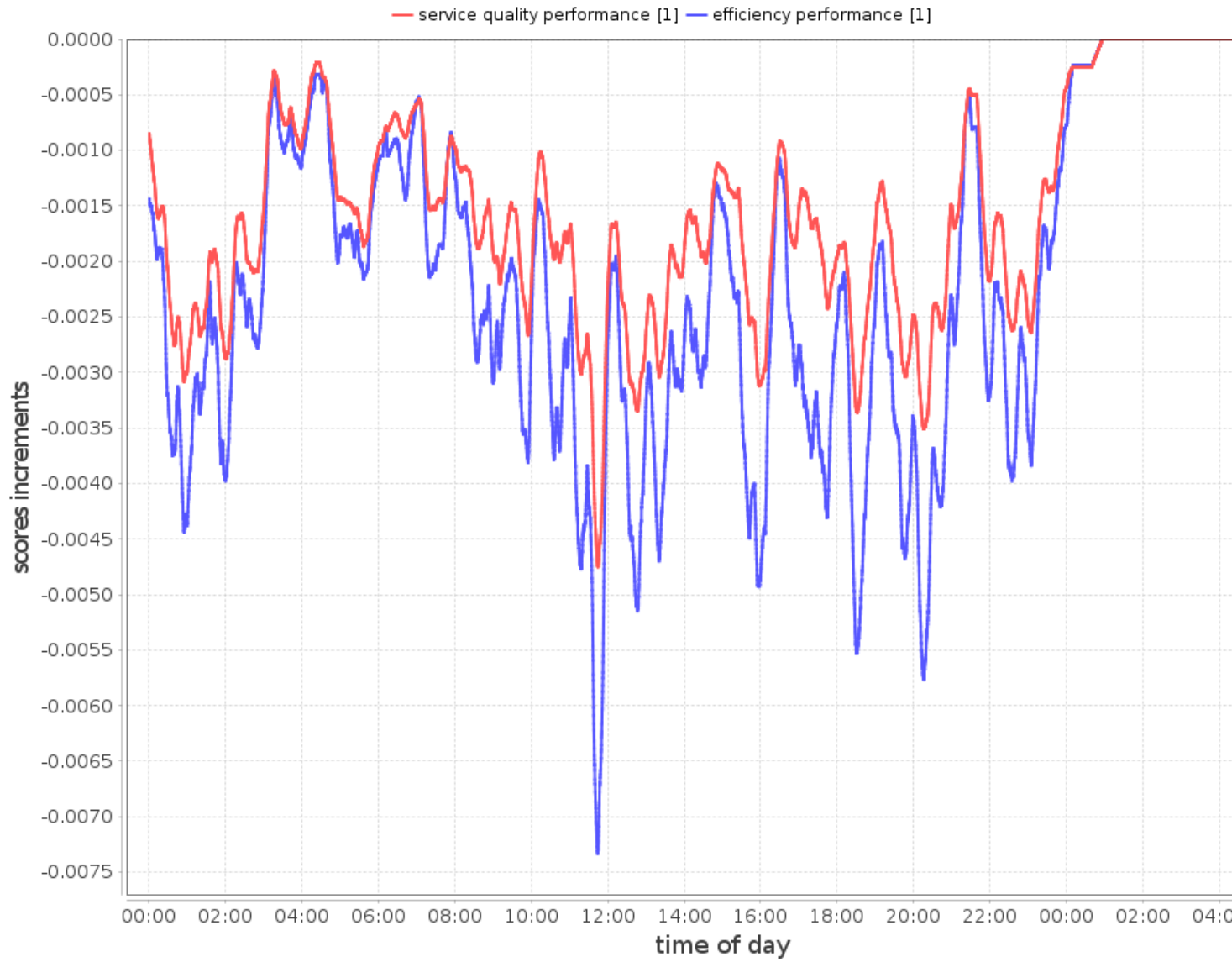
## Status Distribution



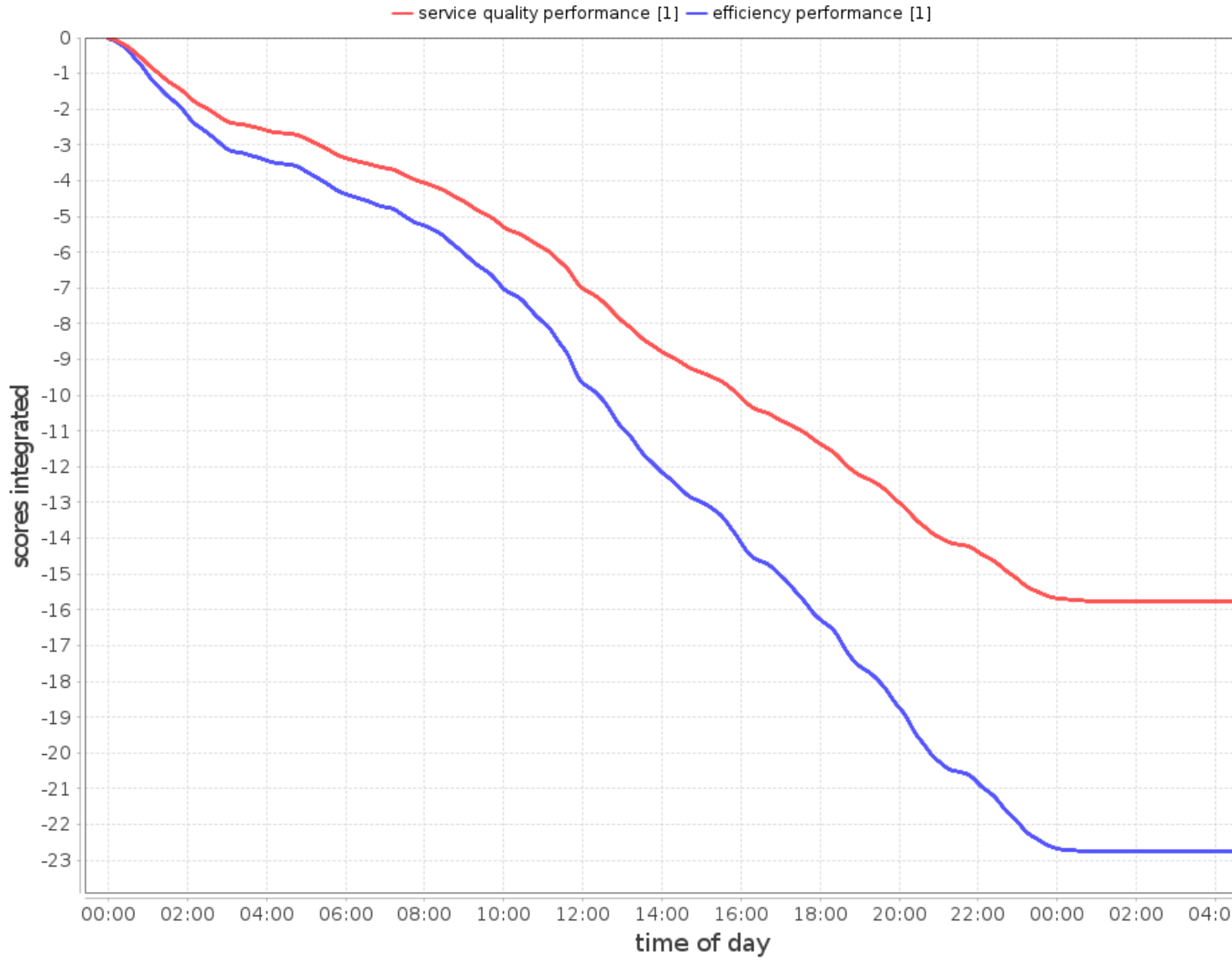
## Aido Scores

### Scores during Simulation

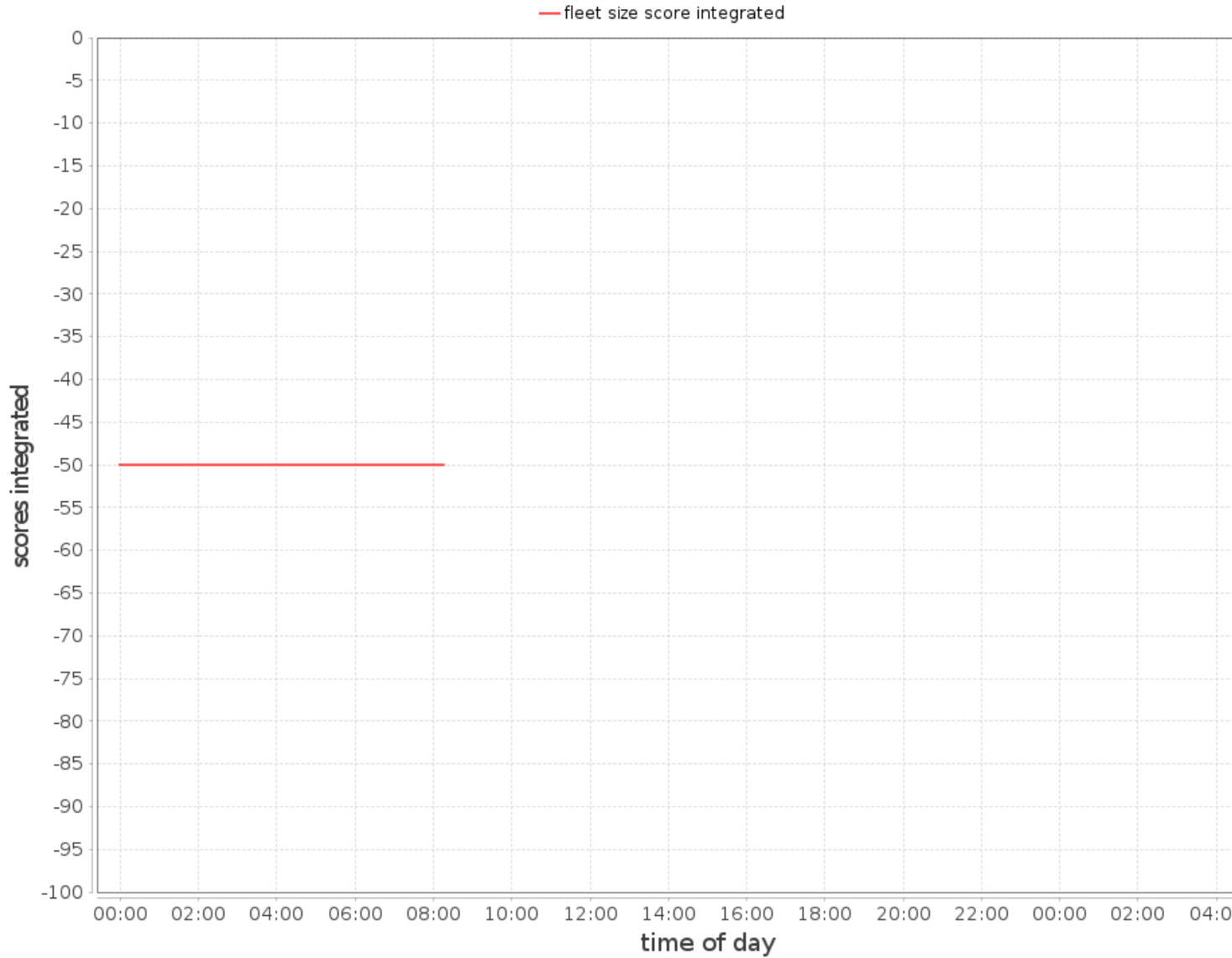
# Service Quality and Efficiency Score Increments



# Service Quality and Efficiency Score Integrated



# Fleet Size Score Integrated



## Final Scores

final service quality score: -15.755358053143674  
final efficiency score: -22.760432212575147  
final fleet size score: -Infinity

[www.idsc.ethz.ch](http://www.idsc.ethz.ch)