



# AMoDeus Simulation Report

## Simulation Information

User: root  
Timestamp: 2018/12/06 - 20:24:35  
  
Iterations: 1 ,i.e., 0 in matsim config.

[AV File](#)   [AV\\_Config File](#)

Dispatcher: AidoDispatcherHost  
Rebalancing Period: -00:00:01  
Redispatching Period: 00:00:10  
  
Network: null\_prepared  
Virtual Nodes: no virtual network found  
Population: 500  
  
Number of Vehicles: 1000  
Number of Requests: 500

# Aggregated Results

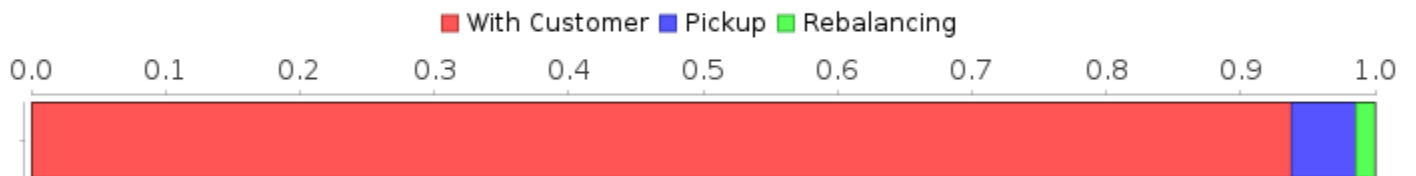
Distance Ratio: 93.81%  
Occupancy Ratio: 0.36 %

## Distances

Total: 8790.87 km  
Rebalancing: 122.52 km (1.39%)  
Pickup: 421.92 km (4.80%)  
With Customer: 8246.43 km (93.81%)

Average Trip Distance: 16.49 km

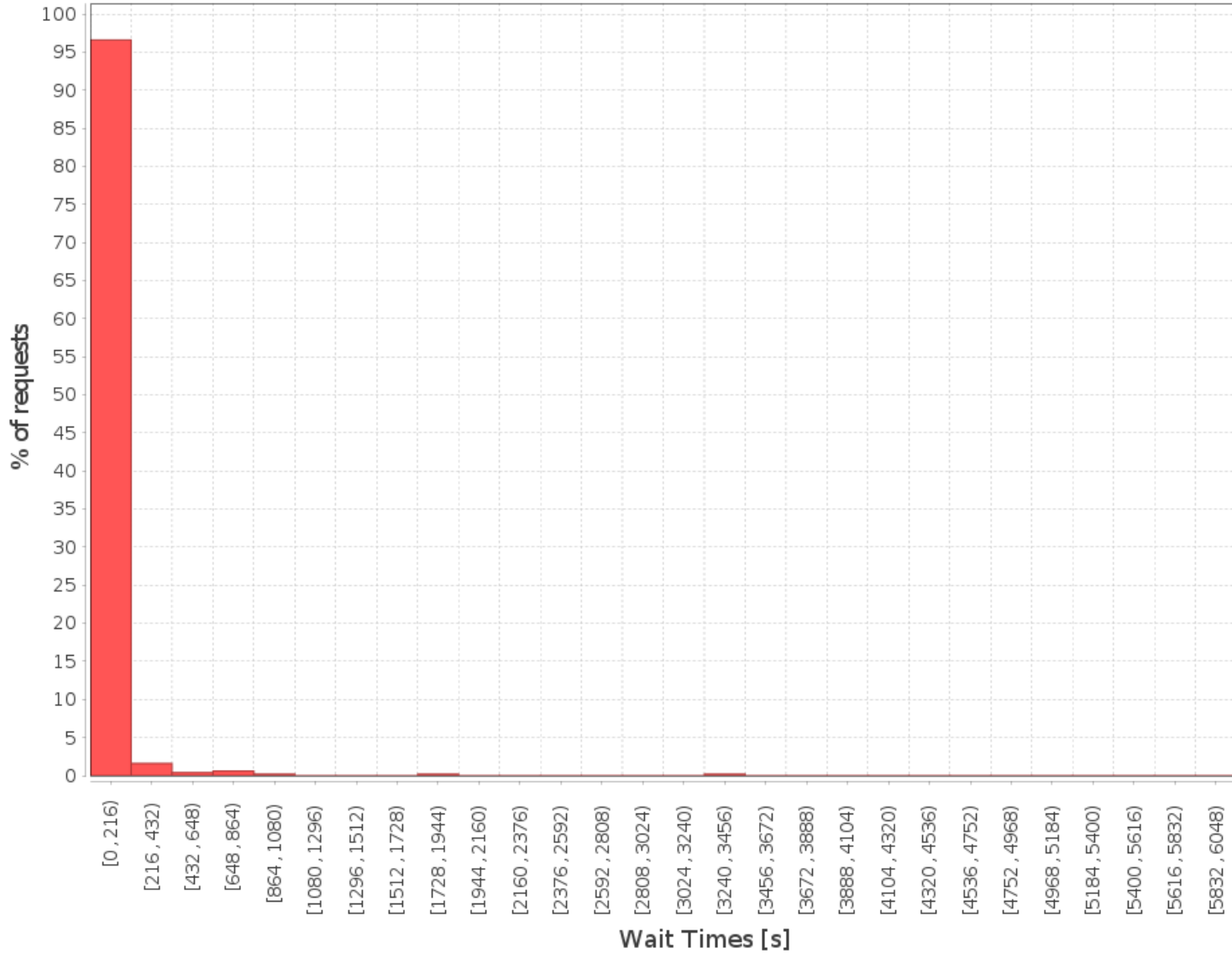
## Total Distance Distribution



## Wait Times

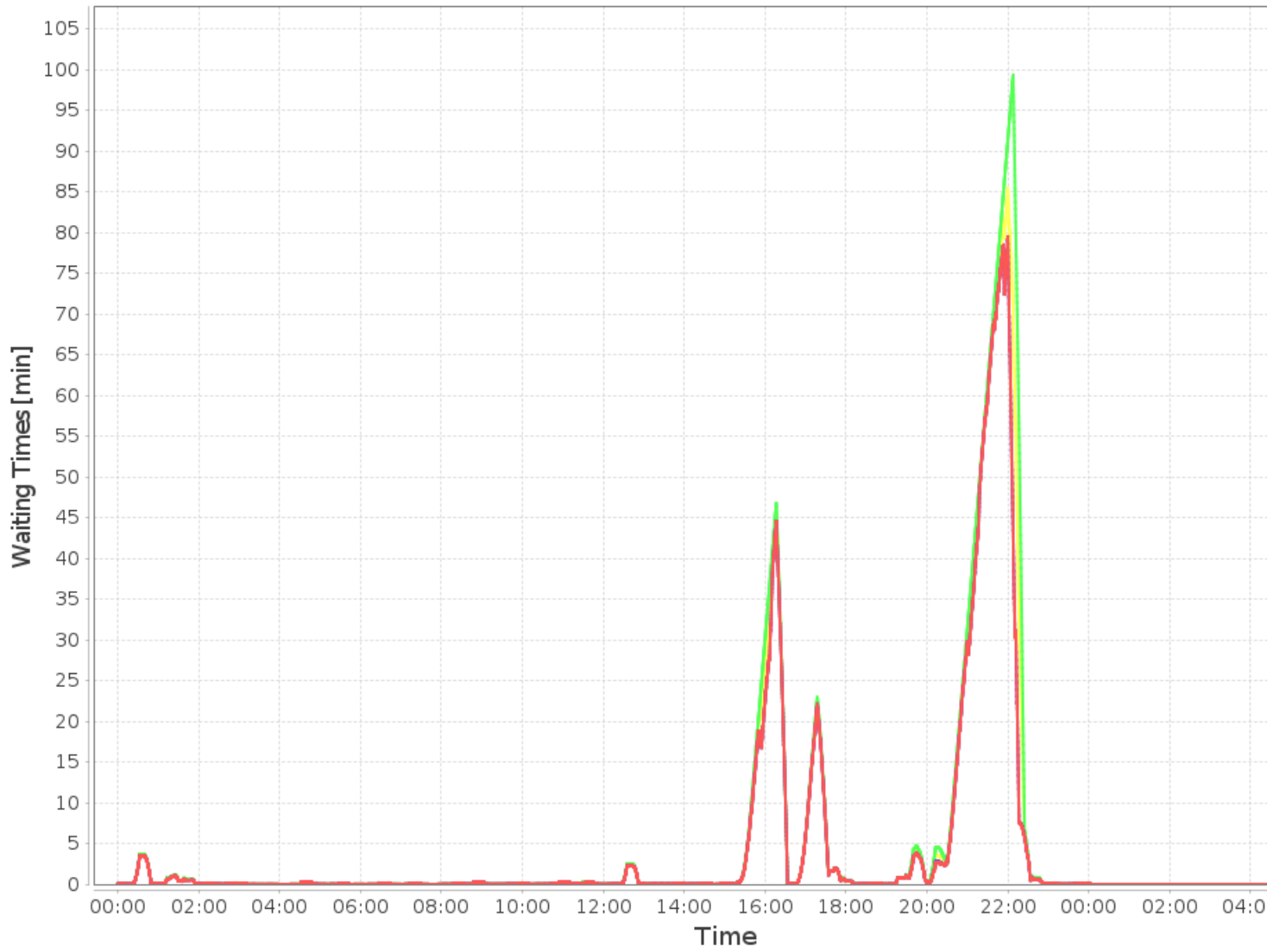
10.0% quantile: 00:00:12  
50.0% quantile: 00:00:16  
95.0% quantile: 00:02:41  
Mean: 00:00:58  
Maximum: 01:47:49

# Number of Requests per Wait Time

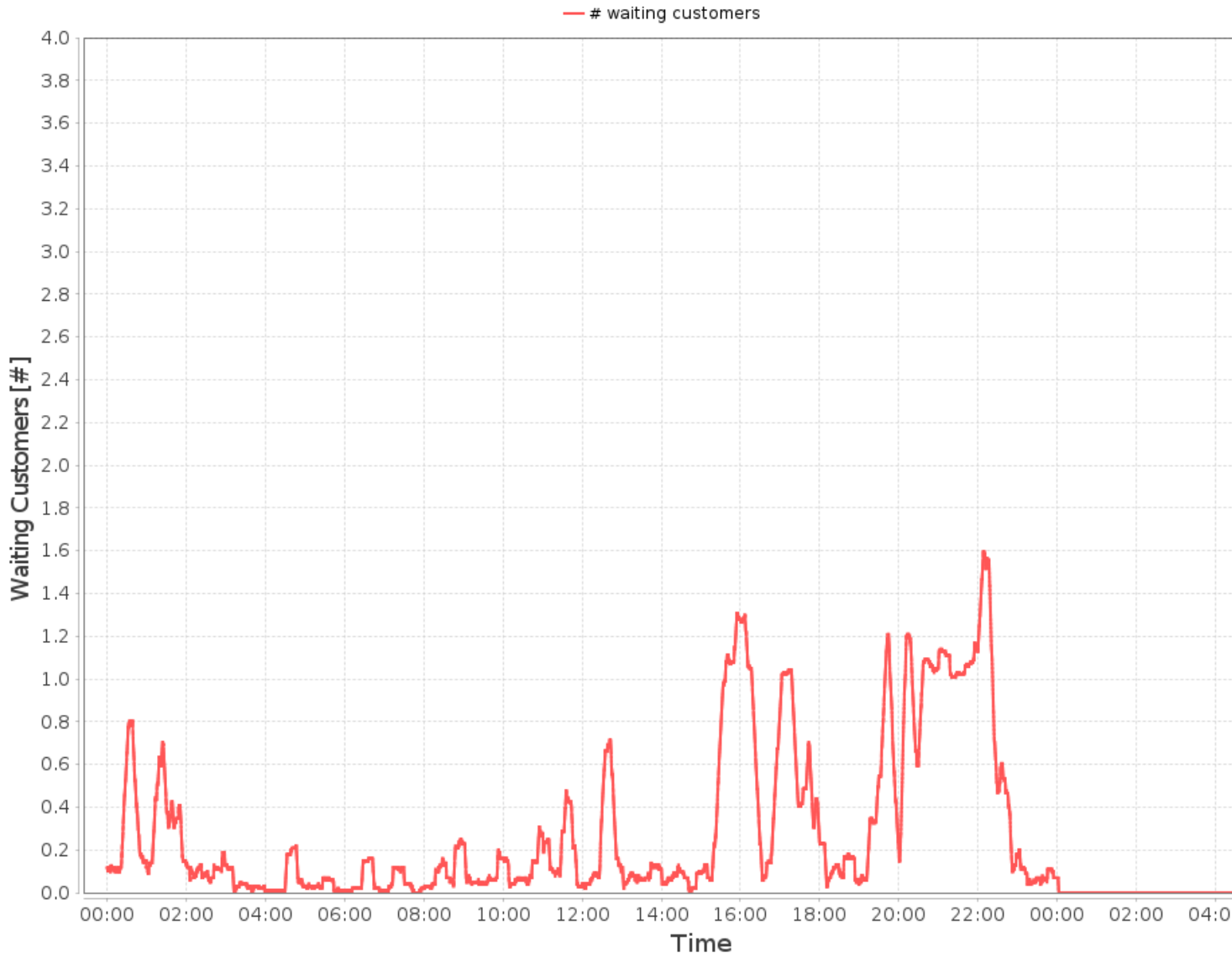


# Binned Waiting Times

— 10.0% quantile — 50.0% quantile — 95.0% quantile — Mean



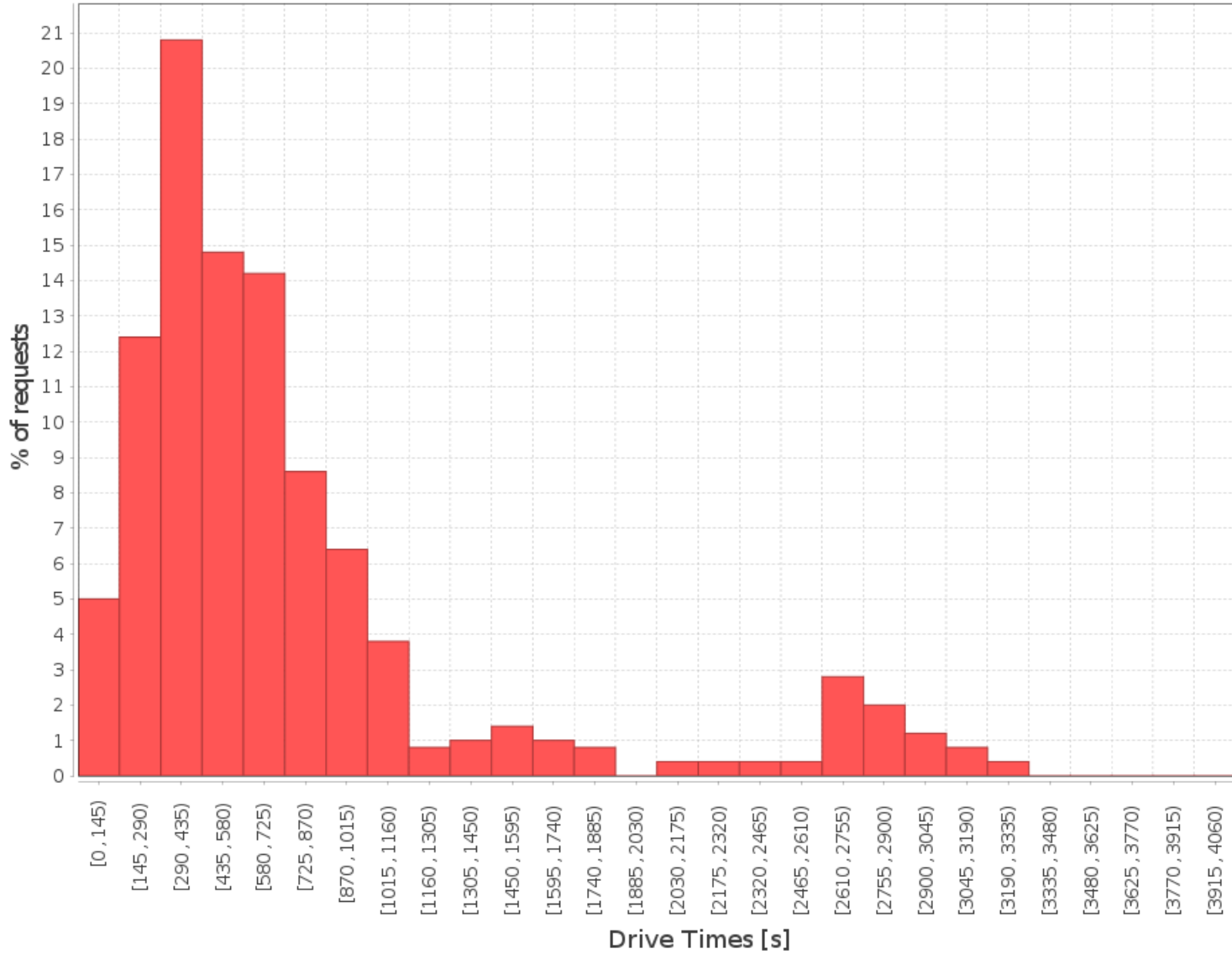
# Waiting Customers per Day Time



## Drive Times

10.0% quantile	00:03:30
50.0% quantile	00:09:00
95.0% quantile	00:45:30
Mean	00:12:48
Maximum:	01:12:20

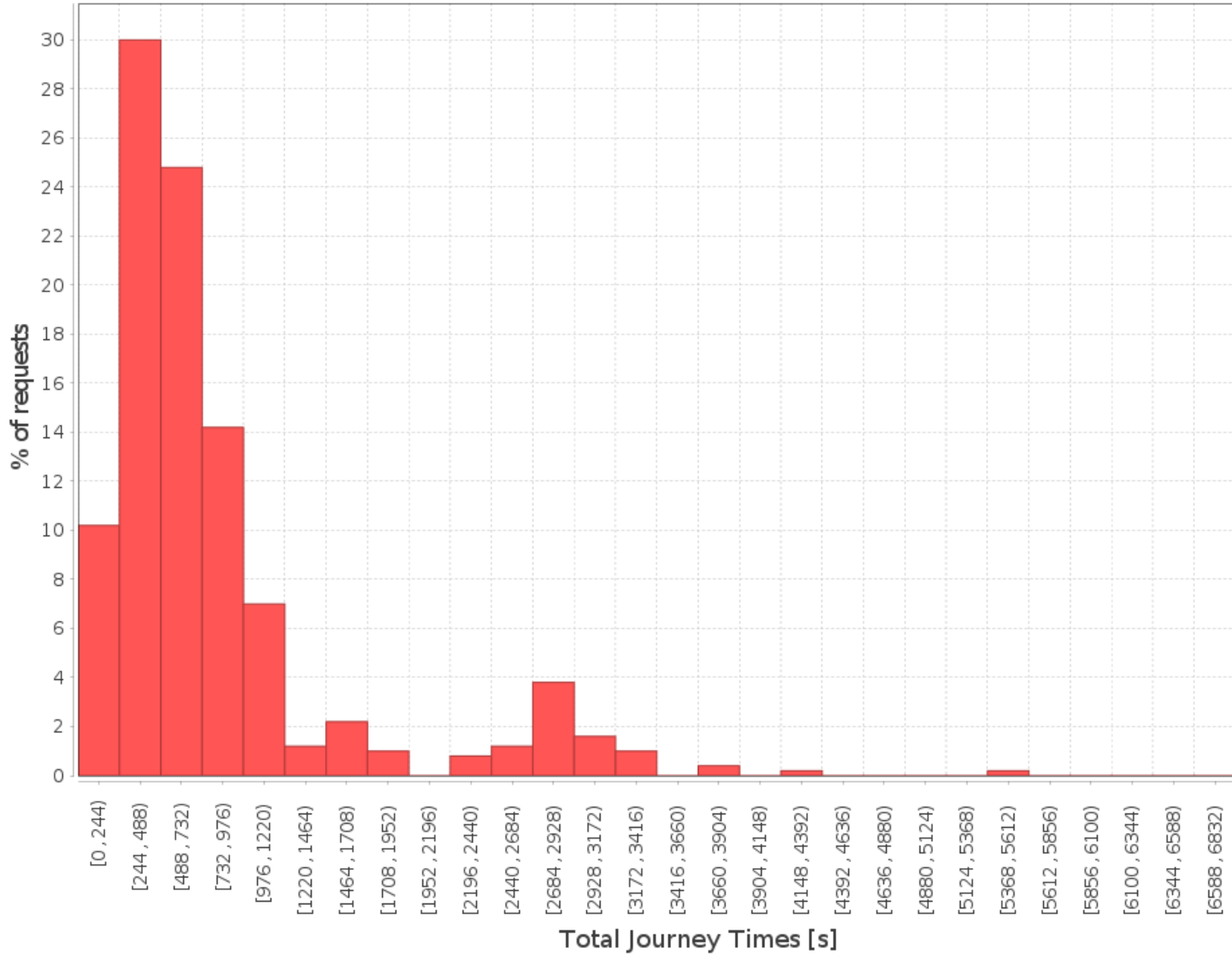
## Number of Requests per Drive Time



### Total Journey Times

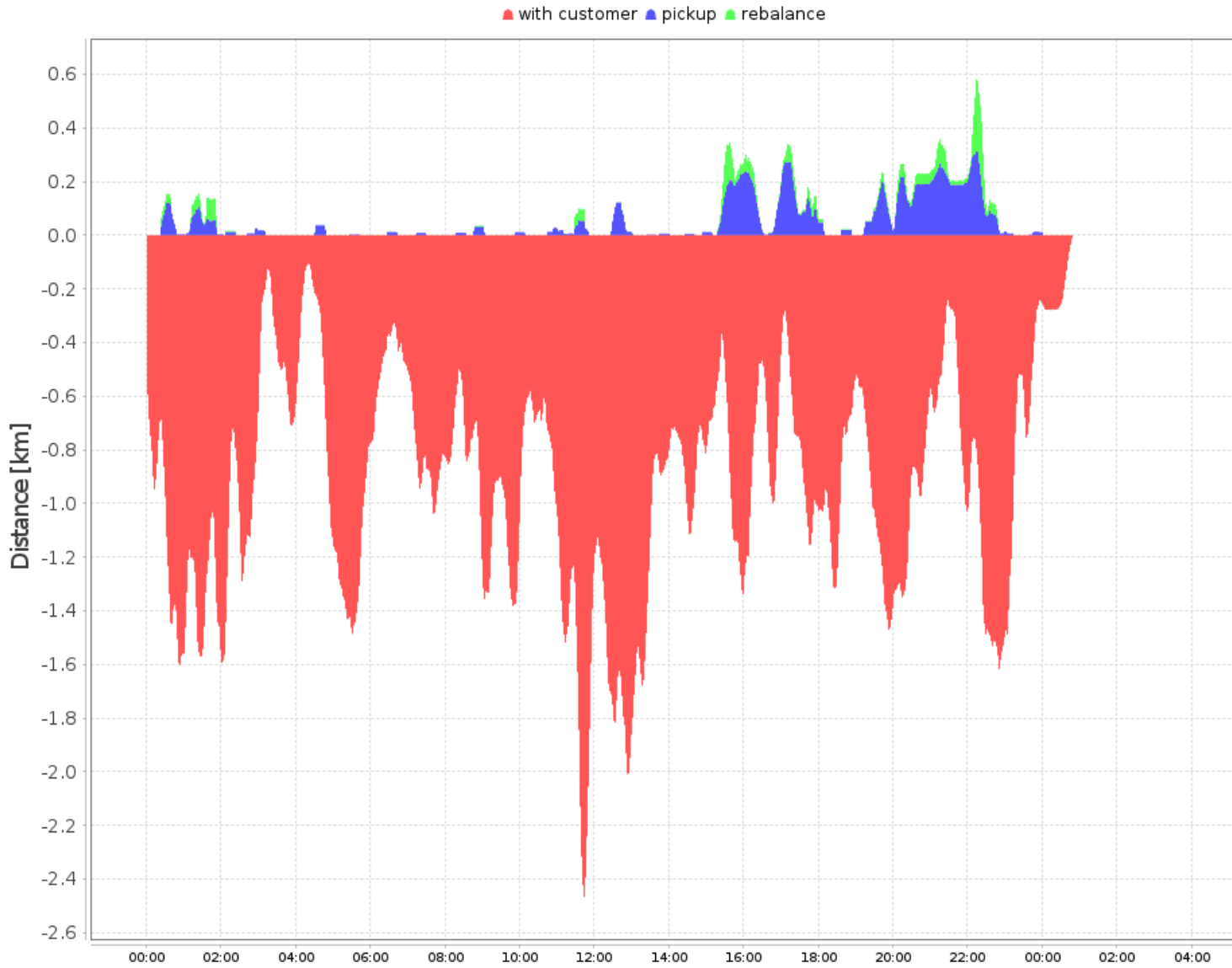
10.0% quantile	00:03:52
50.0% quantile	00:09:36
95.0% quantile	00:47:20
Mean	00:13:46
Maximum:	02:01:49

# Number of Requests per Total Journey Time



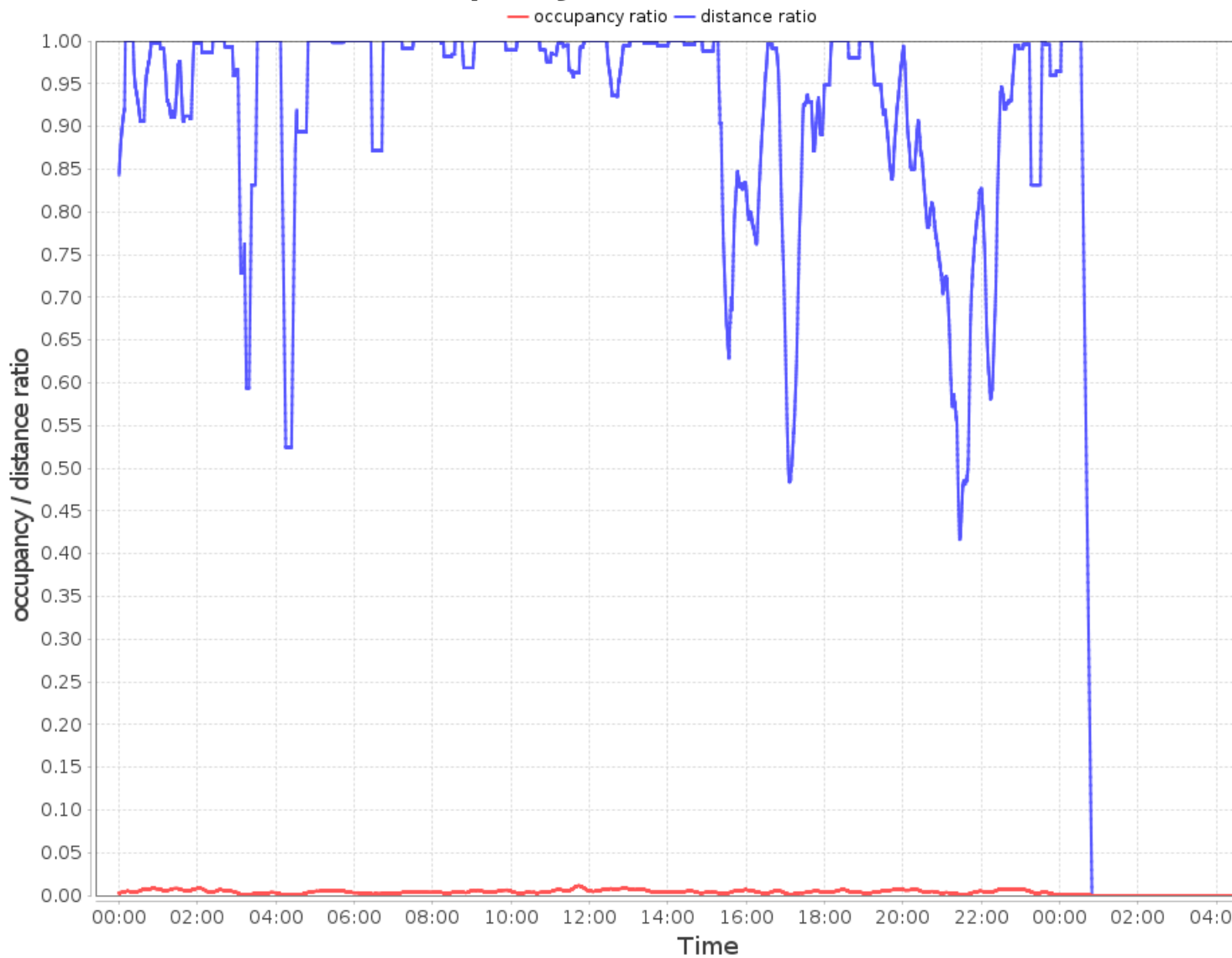
# Fleet Efficiency

## Distance Distribution over Day

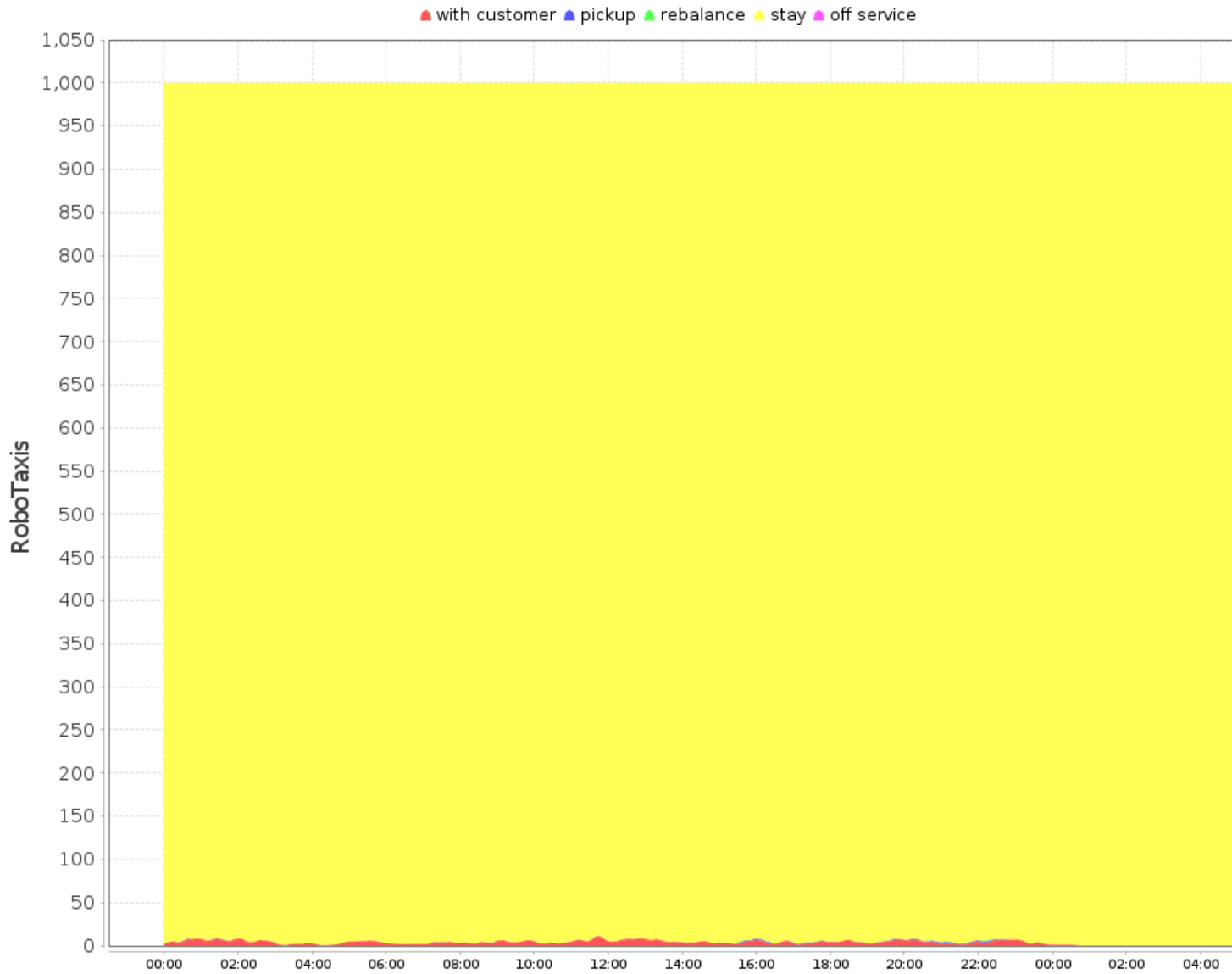




# Occupancy and Distance Ratios



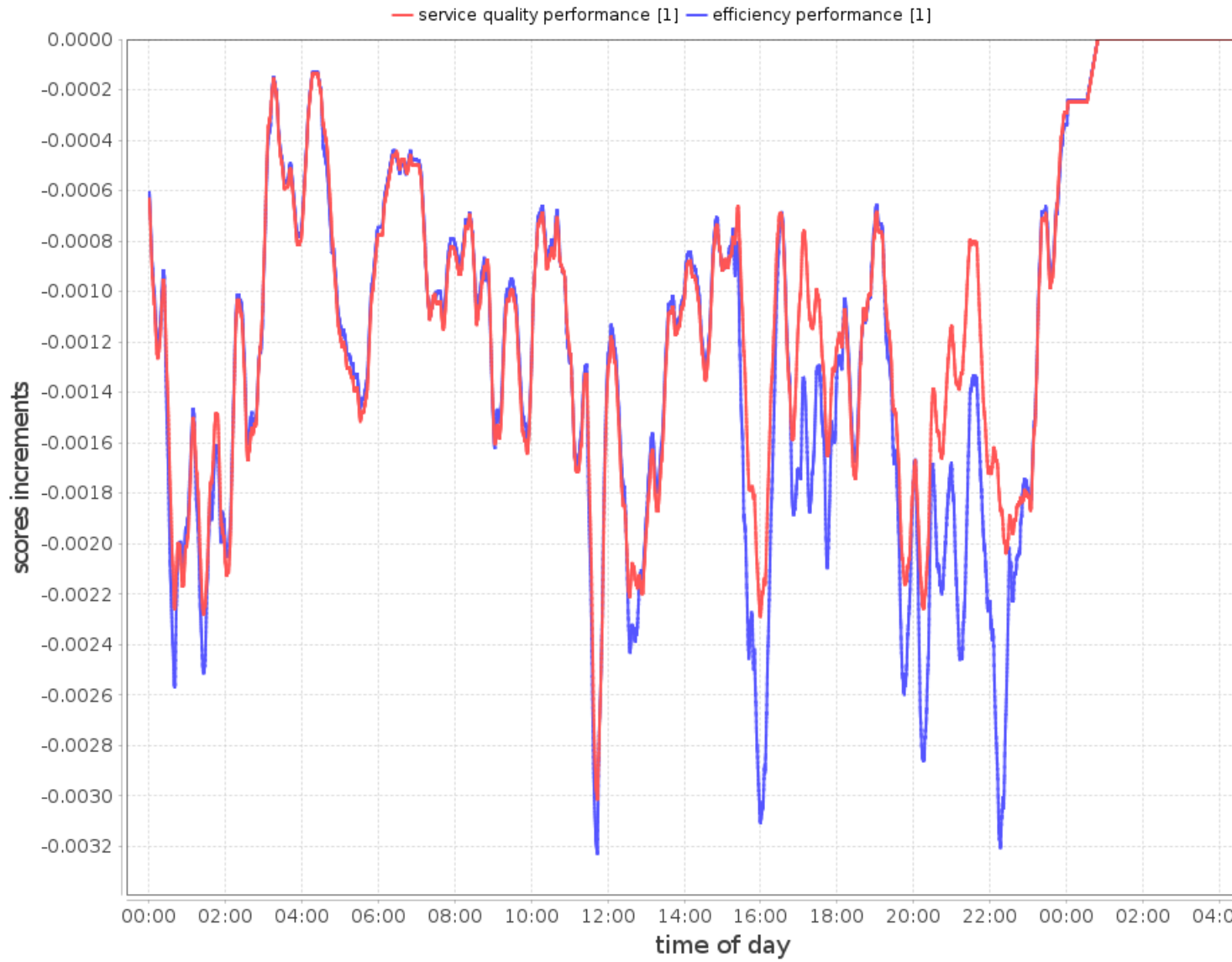
## Status Distribution



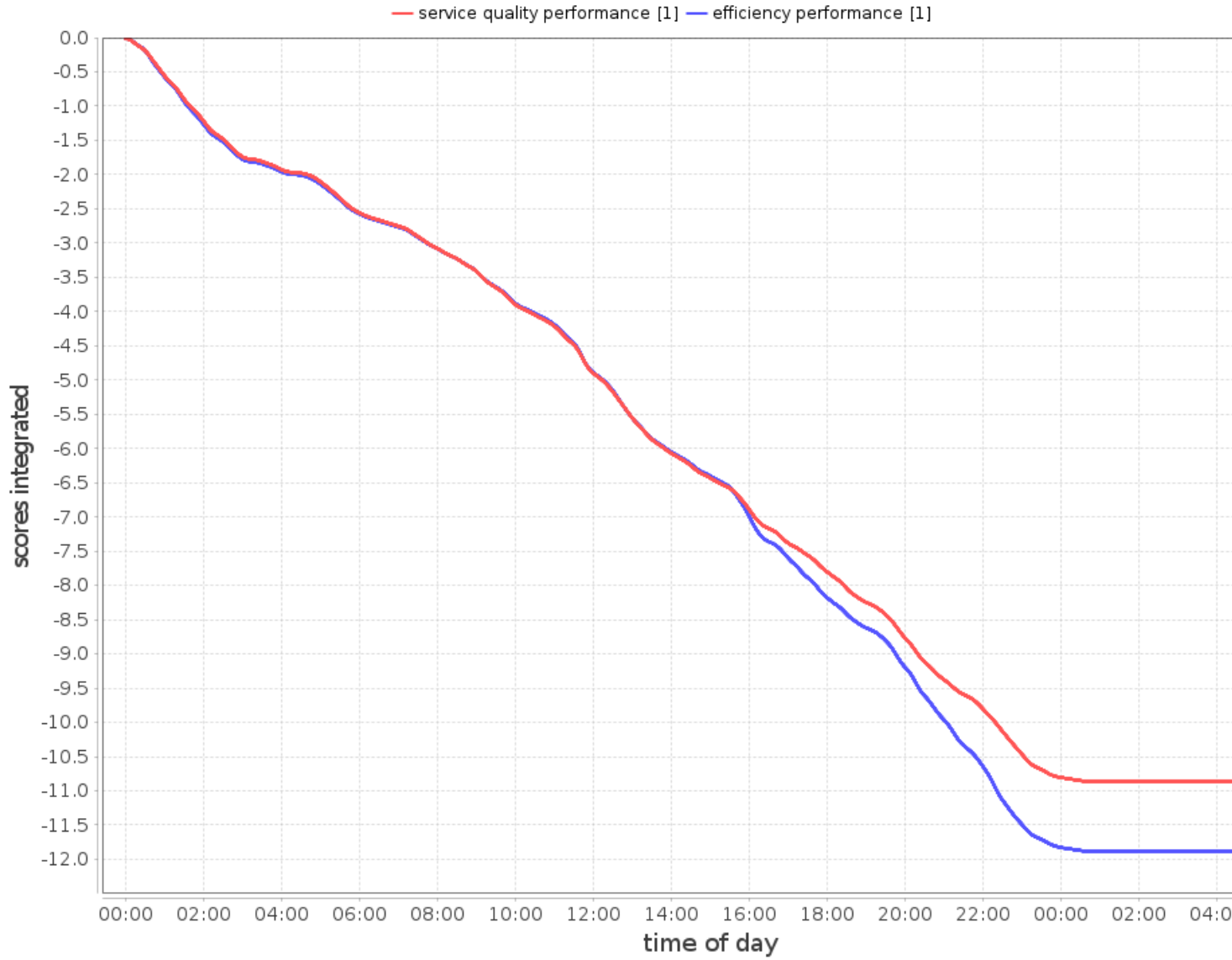
## Aido Scores

### Scores during Simulation

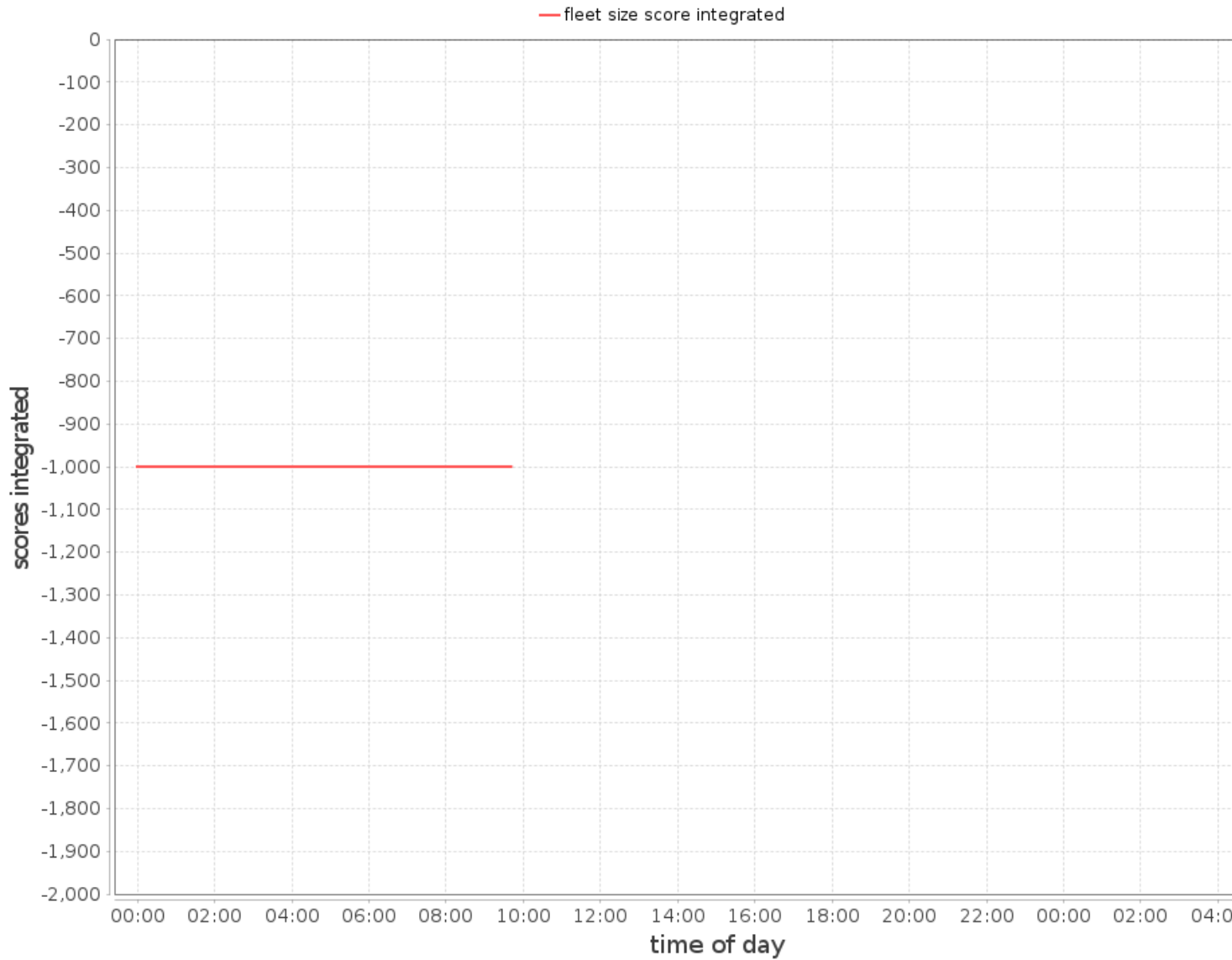
# Service Quality and Efficiency Score Increments



# Service Quality and Efficiency Score Integrated



# Fleet Size Score Integrated



## Final Scores

final service quality score: -10.867544978372223  
final efficiency score: -11.887619913488432  
final fleet size score: -Infinity

[www.idsc.ethz.ch](http://www.idsc.ethz.ch)